

Serials

Triangle

VOLUME LIV, NUMBER 15

DREXEL UNIVERSITY, PHILADELPHIA, PA.

FRIDAY, OCTOBER 27, 1978

I.F. liability insurance renewed for one year

by Neil Schmerling

The one-year liability insurance policy covering most of Drexel's fraternities and the Panhellenic apartments has been renewed for one more year, according to Earl Potteiger, Manager of Real Estate and Insurance. The policy is with the National Indemnity Company (NIC). The annual premium will be practically the same as last year's which was "roughly \$16,000," explained Potteiger. This provides coverage up to \$500,000 for each occurrence.

Potteiger reported that there were no problems at all in obtaining coverage this year. Last year, there were questions raised in regard to meeting regulations enforced by the Philadelphia Fire Department.

However, these had no effect on obtaining coverage this year.

According to Potteiger, this policy covers house organizations, individual members, including officers, and the alumni organization.

This marks the first year in a long time when there was no substantial increase in the premium. Between 1972-73 and 1976-77, the annual premium for the thirteen houses "increased from a total of \$3596 to \$13,998."

The University itself is covered for fire insurance on buildings and the contents of those buildings. This policy is with the Insurance Company of North America (INA). Also included in this package is general public liability, which protects the university against suits

from bodily and personal injury and property damage. The package also covers injury and damage sustained from heating and plumbing malfunctions (boiler insurance), workmen's compensation and damage arising from other tragedies (earthquakes, floods and other natural disasters).

In addition to their policy with NIC for liability insurance, the fraternities are included in the University's policy with INA. On the INA policy, they are covered for everything the University is, except for liability. Most of the fraternities' policies also include fire insurance on contents. Potteiger explained that the insurance on contents includes all loose moveable equipment except for personal property.

Grad-Placement expands for larger class

On campus recruitment to start

by Chris Holden

Starting on November 6, the Drexel University Graduate Placement Office is having on-campus job recruitment for the graduating class of 1979.



Dave Rothfuss

According to David Rothfuss, Director of Graduate Placement, the fall term recruiting has been expanded this year from 3 to 4 weeks due to the size of the graduating class as well as the number of recruiting companies which will be on campus. Each prospective employer is given a designated alphanumeric code in which the letter corresponds to the lettered week in which the company will appear and a number which designates one company from

another.

For example, EXXON Corporation has an alphanumeric code of A-26 which is translated to company number 26 appearing the week of November 6-10. The number 26 is used when submitting resumes to EXXON, through the Graduate Placement Office. Lists of employers and the week they appear on campus are displayed in various halls throughout the campus.

The next and final block of on-campus interviews will be held during winter term beginning January 15 and ending possibly 8 weeks from then. The usual recruiting period is 7 weeks but if Winter recruiting is as busy as Fall recruiting, which is probable, then recruiting period for Winter Quarter will be 8 weeks.

The actual recruiting used by Drexel is a revolutionary type of placement. It involves a prescreening by companies to cut down the number of interviews a company will have to make as well as giving the student interviews with only seriously interested corporations.

The Graduate Placement Office also offers alumni placement services which send out a list of opportunities through a newsletter as well as having conferences with alumni in search of new or different

occupations.

Besides these services the Graduate Placement Office provides individual career counselling and maintains extensive general employment and career information files, assists students seeking off campus.

Besides these services the Graduate Placement Office provides individual career counselling and maintains extensive general employment and career information files, assists students seeking off campus part-time and summer positions as well as a variety of other services. As Mr. Rothfuss comments, "We're willing to talk to anybody."

Faculty Council elects new members

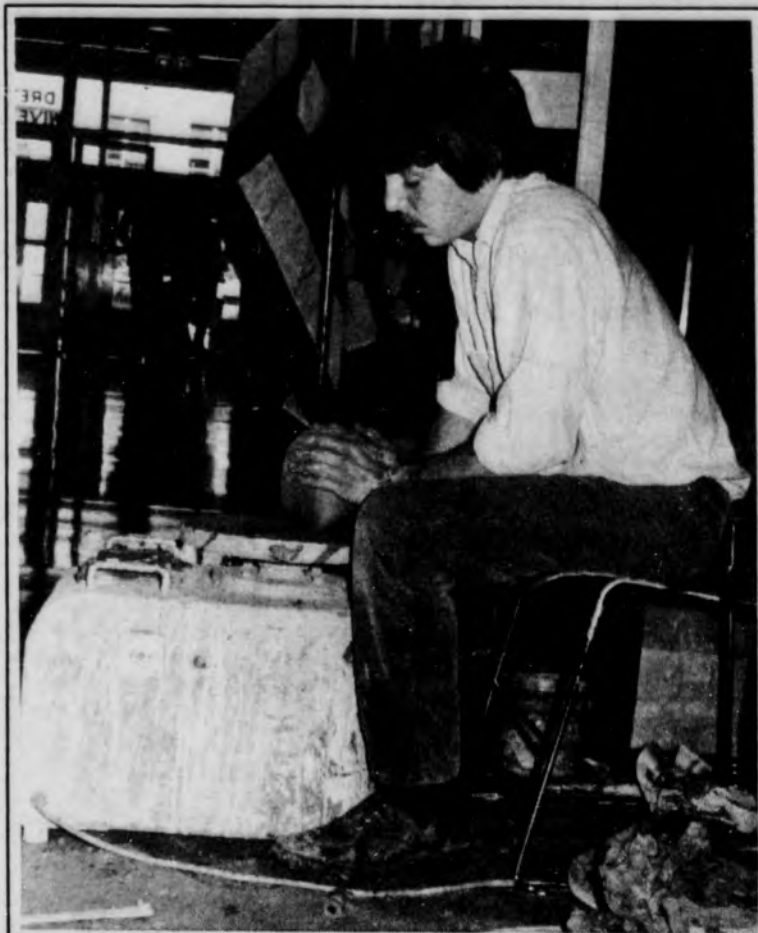
by Neil Schmerling

Four professors at Drexel have recently become members of the Faculty Council. According to Dr. Edward Koziara, Chairman of the Faculty Council, these professors replaced faculty whose terms expired. The Faculty Council received petitions for nominations, but as Koziara explained, there was no election since these were the only nominations.

Professor Herbert Rossman replaced Koziara as a representative from the College of Business and Administration. Dr. John Colamosca replaced Dr. Arthur Shostak as a representative from the College of Humanities and Social Sciences. Professor Keith West and Dr. Harry Harris replaced the positions vacated by Dr. Wesley Pipes and Dr. John Cooney.

Koziara explained that Dr. John Thygeson (Engineering) and Dr. Richard Klaffer (Engineering) will be stepping down from their Faculty Council positions. At the present time, there are no replacements for these positions, and Faculty Council has not received any nominations. There are currently 14 members of the Council.

A replacement for Koziara will be elected at the November 7th meeting of the Faculty Council.



Jimmy Friel demonstrates Pottery Throwing in the Creese Student Center

photo by Mike Trosino

Ring sales increase

by Dave Husman

The University Store reported that class ring purchases are up almost 60 percent over last year. Approximately 260 rings were sold during the last ring week as opposed to about 150 last year.

Michael Noonan, Store Manager, attributes part of the increase to the change in ring companies. In past years, most of Drexel's class rings were sold by the Dieges and Clust Co., however the most recent

contract was awarded to Jostens. Noonan said they were chosen because they had the lowest bid and had a "good track record." Jostens has a very good merchandising and promotional campaign according to Noonan, which helped bring in students. For example, during this last ring week Jostens offered a 10 percent discount on all sales.

Another factor which is responsible for the increase is heightened student pride in the University. When several students were questioned on why they bought rings, many said that they were proud of graduating from Drexel, and that they wanted to show they came from Drexel by wearing a class ring. Noonan feels that this is part of a larger trend of more student interest and pride at Drexel.

The average cost of a ring today is estimated to be about \$115, which is about the cost for a 10 karat gold men's medium ring. Three metals are offered: 14 kt. gold (white or yellow), 10 kt. gold (white or yellow), and Argentus. Argentus is an alloy of gold, silver, and palladium which looks the same as white gold. It is much cheaper, about \$65 for the ring mentioned above, and is just as durable as gold. Argentus rings are being marketed as economy model rings for those who want a ring but cannot afford gold. This year, for the first time, engineers had the option of having their degree (BSCE, BSME, BSEE, etc.) cast into the ring. This innovation appears to have done well, and may be extended to the Business College next year. Nesbitt College would pose some problems because if the full degree description were placed on the ring the Drexel crest might have to be removed. This would endanger Drexel's copyright on the ring design.

Noonan says Jostens plans another ring week sometime in January. While the 10% discount will not be able to be offered again, he says that there will be some promotional device offered then also.

News Notes

Following his indictment, U.S. Republican Congressman Joshua Eilberg claimed that he has "served loyally". A federal grand jury indicted Eilberg on charges that he illegally profited from involvement in a federal contract for construction at Hahnemann Hospital in center-city Philadelphia.

Anti-inflation proposals by President Carter include the possibility of tax relief for workers who comply with voluntary wage-price guidelines. Workers who meet the 7% annual pay standard would receive a tax rebate should inflation exceed 7%.

Dr. Mario Jascalevich, the New Jersey surgeon has been acquitted of charges he murdered three

hospital patients with overdoses of the drug carare. The trial combined the murder accusations with a constitutional confrontation. New York Times reporter Myron Farber was released after having been jailed for contempt for refusing to surrender his notes on the case.

More than 200 expensive homes were destroyed or damaged by a deliberately set fire in Southern California. There were 53 injuries reported in Malibu, where the fire charred 25,000 acres of land.

Howard Johnson's monopoly on the Pennsylvania Turnpike has ended. Starting January 5, ARA Food Services will operate the Valley Forge and Brandywine service centers.

Minority Fellowships

The National Research Council will advise the National Science Foundation in the selection of candidates for the Foundation's program of Minority Graduate Fellowships. Panels of eminent scientists and engineers appointed by the National Research Council will evaluate qualifications of applicants. Final selection of Fellows will be made by the Foundation, with awards to be announced in March 1979.

The NSF Minority Graduate Fellowship Program is open only to persons who are citizens or nationals of the United States as of the time of application, and who are members of an ethnic minority group underrepresented in the advanced levels of the Nation's science talent pool -- i.e., American Indian, Alaskan Native (Eskimo or Aleut), Black, Mexican American/Chicano, or Puerto Rican.

Initial NSF Minority Graduate Fellowship awards are intended for students at or near the beginning of their graduate study. Eligibility is limited to those individuals who, as of the time of application, have not completed postbaccalaureate study in excess of 30 semester hours or 45 quarter hours, or equivalent, in any field of science, engineering, social science, or mathematics. Subject to the availability of funds, new fellowships awarded in the spring of 1979 will be for periods of three years, the second and third years contingent on certification to the Foundation by the fellowship institution of the student's satisfactory progress toward an advanced degree in science.

These fellowships will be awarded for study or work leading to master's or doctoral degrees in the mathematical, physical, medical, biological, engineering,

and social sciences, and in the history and philosophy of science. Awards will not be made in clinical, education, or business fields, in history or social work, for work leading to medical, dental, law, or public health degrees, or for study in joint science-professional degree programs. Applicants will be judged on the basis of ability. The annual stipend for Minority Graduate Fellows will be \$3,900 for a twelve-month tenure with no dependency allowances.

Applicants will be required to take the Graduate Record Examinations designed to test aptitude and scientific achievement. The examinations, administered by the Educational Testing Service, will be given on December 9, 1978 at designated centers throughout the United States and in certain foreign countries.

The deadline date for the submission of applications for NSF Minority Graduate Fellowships is December 8, 1978. Further information and application materials may be obtained from the Fellowship Office, National Research Council, 2101 Constitution Avenue, Washington, D.C. 20418.

Bockius named agency manager

Frank E. Bockius, a Provident Mutual Life Insurance Co. agency manager from Abington, Pennsylvania, has been elected to the Lambda Chi Alpha Fraternity Order of Merit. He will be inducted in ceremonies at the fraternity's 37th General Assembly on August 14, 1978 at the Tan-Tar-A Resort on the Lake of the Ozarks, Missouri.

Established in 1933, the Order of Merit recognizes fraternity alumni for dedicated volunteer service to chapters or the general fraternity, its members being elected biennially by Lambda Chi Alpha's board of directors. Bockius served as member, and at various times chairman and vice-chairman, of an alumni advisory board and of the house corporation board of directors for his initiating chapter, Epsilon-Kappa at Drexel University, from 1958 to 1975. As president of his chapter's alumni association, he was an active leader in a successful campaign to raise funds to build a new chapter house. In recognition of his contributions during seventeen years as an active alumnus, an award is presented annually in his name to Epsilon-Kappa's outstanding undergraduate member.

Bockius' sales management position with Provident Insurance involves recruiting, selecting, training, and supervising career agents as well as management of administrative services. He became a chartered life underwriter in 1961 and is a past president of the Philadelphia Association of Life Underwriters and a current director of the Pennsylvania Association of Life Underwriters.

He is a member of the Abington Township School District Authority,

is a republican part committeeman from the township, and he currently serves as a director of Drexel's General Alumni Association as well as being a past chairman of his alma mater's annual giving program.

Founded in 1909, Lambda Chi Alpha is among the largest collegiate fraternities in North America with over 140,000 initiated members and 217 chapters and colonies in the U.S. and Canada. The fraternity's international headquarters is located in Indianapolis, Indiana.

HEAVY DATE

Appointment With The Future For Engineering Grads

Engineering opportunities exist at Hughes Aircraft Company, Culver City, California, in its Electro-Optical & Data Systems Groups, for graduates with the following degrees:

- BS in EE, Comp Sci, ME
- MS in EE, Comp Sci, ME
- PhD in EE

The positions involve the development of advanced electro-optic and space sensor systems, laser systems, and airborne computers and software. Opportunities are available in the following specialized areas:

- Analog & Digital Circuit Design
- Hybrid Circuit Design
- Systems Analysis
- Systems Engineering
- Signature Technology
- Pattern Recognition
- Image & Information Processing
- Computer Architecture
- Scientific Programming
- E.O. Sensor Design
- Optical Systems Design
- Signal Processing Circuit Design
- Structural Dynamic Analysis
- Mechanical Product Design
- Servo Design

Positions are also available for BS graduates on our Masters Fellowship Work-Study and our Engineering Rotations Programs. For details, interested graduates are requested to schedule interview appointments with our recruiter. Your placement office will schedule you for our recruiting visit on Monday, November 6, 1978.

HUGHES

HUGHES AIRCRAFT COMPANY

U.S. citizenship required Equal opportunity M/F/H/C employer

Discover The Taste of India At

MAHARAJA II
महाराज २

Indian Restaurants

Now Offering the Widest Selection of Vegetarian
and Non-Vegetarian Dishes

110 South 40th Street, 222-2245
237 Chestnut Street, 627-3020

20% Off With This Ad Or Your Student I.D.

FREE

CATALOG of COLLEGIATE RESEARCH

Over 10,000 listings! All subjects.
Send NOW for this FREE catalog.
(offer expires Dec. 31, 1978)

Send to: COLLEGIATE RESEARCH
P.O. Box 84396, Los Angeles, CA. 90073

Honeywell gives

The Honeywell Process Control Division, of Fort Washington, Pa., has given \$11,000 in computer components and devices to Drexel University's Department of Electrical Engineering.

The computer equipment brings to more than \$114,000 the total of equipment and funds the Process Control Division and its parent firm, Honeywell, Inc., have given the university since 1960.

More than 100 Drexel alumni are employed by Honeywell, Inc., and four Drexel students are currently employed at the Process Control Division under the university's cooperative education plan, a plan in which students gain on-the-job training in their academic field of study.

The Honeywell Process Control Division is located at 1100 Virginia Drive, Fort Washington.



Hooded
Heather Blue
Sweatshirt

\$10⁷⁵

Drexel University
Store

★ **SENIORS** ★

Give us
your choice!

Survey on Commencement
Speaker and Senior Dinner Dance

VOTE: Tuesday, Oct. 31
11 - 2 p.m. Great Court
or Fill out surveys circulating around campus.

ANNOUNCEMENTS

Organizations

Student organizations, check your mailbox for important information about the upcoming Activities Day on Nov. 21! Sponsored by the Student Organizations Coalition. The SOC will hold its next meeting on Wed., Nov. 8 at 4:30 PM in 3034/35.

Beta Alpha Psi

Delta Tau chapter of Beta Alpha Psi, the national honorary accounting fraternity announces its first initiation banquet of the academic year to be held at Cavanaugh's Restaurant on Thursday, November 30, 1978. Accounting majors interested in becoming members may pick up application forms from J. F. McKenna (509 G Matheson) or Mrs. Geneva Poe, Accounting Department Secretary (509 K Matheson).

Requirements for admission to the chapter are an overall grade point average of 3.2 or better, an accounting grade point average of 3.6 or better, and completion of at least 2 accounting courses beyond the basic courses (B101, B102, and B103).

Exhibitions

Major Exhibitions: **Contemporary Drawings: Philadelphia**, Sept. 15 - Nov. 26. Organized by the Academy and the Philadelphia Museum of Art, this exhibition identifies Philadelphia artists who have sparked a resurgence of public interest in works of art on paper. Half of the show (100 drawings by 26 artists) will appear at the Academy in the fall, the other half at the Art Museum in the spring. **350 Masterpieces of American Art**, Dec. 18 - Feb. 25. An exhibition of American painting, sculpture, and drawings from the Academy's

permanent collection defines the major role of this institution in supporting and influencing art in the United States. Pennsylvania Academy of the Fine Arts, Broad and Cherry sts., Phila., Pa. 19102. For more information, call (215) 972-7600.

Deli-Lunches

Deli-lunches will return in full force this week. The lunches will be held in the Hillel lounge which is above room 310 in the Main Building. One lunch will be on Tuesday between 12:00 and 1:30 and the second will be on Thursday at the same time. Reservations are now being taken for tickets to the Sixer-Nets game on Wednesday November 8th. If more than 25 people attend, \$6 tickets will only be \$4. For more info call Hillel at 895-2531 or stop by our office at 224 CSC.

Israel

An Israel Organizing Conference will be held on November 3-5 at the JYC camps in Zieglerville, Pa. Use

this break in your studies to help create a powerful Israel oriented student movement on campuses throughout this region. Please contact the Hillel office at 895-2531 if you are interested in attending.

classified ads

FOR SALE: Honda 550-4 cylinder. Good shape, must sell. Call 387-9367 around 7 p.m. ST110378

BUSBOYS NEEDED: The Fiddler Restaurant, 1515 Locust St. 546-7373. 3-4 nights per week. No experience necessary.

WAITRESSES NEEDED: The Fiddler Restaurant, 1515 Locust St. 546-7373. 3-4 nights per week. Experienced only.

COMPUTER TERMINAL, WORD PROCESSOR: Novar/GTE memory typewriter. As you type on the IBM Selectric II, a copy is stored on magnetic tape allowing duplicate copies made at 15 characters per second. Has editing functions delete character, and delete line. Also can function as an ASCII computer terminal, 1200 baud, RS-232 interface, or use the built in modem. Excellent condition. \$1500. Stuart Boose 698-1088, after 7:30 P.M.

WANTED: Guitar - Acoustic, Steel string guitar wanted for beginning player. Call Tim V13-4045 evenings. ST102978

PART TIME SECRETARY for office on Penn Campus. 15 hours per week. Apply Jewish Campus Activities Board 243-8265. UP102978

SKIERS WELCOME: If you want to ski and party hardy at Sugarbush, Vermont from Sunday Dec. 17th - Fri. Dec. 22nd in a condominium on the slopes, call 349-8798. Costs are \$60 for the condo, and \$65 for a five day lift ticket. Transportation included.

ASTROLOGER: Will do Horoscopes, Natal, Chart Comparison, Questions, Forecasts, etc. Donation basis. Include Birth Date, Time, Place. Vickie Brodbeck, R.D. #1 Box 258, Bedford, PA. 15522

IMPROVE YOUR GRADES! Send \$1.00 for your 256-page, mail order catalog of Collegiate Research. 10,250 topics listed. Prompt Delivery. Box 25907-B, Los Angeles, Calif. 90025. (213) 477-8226 PP042778

WANTED: Part time production machine operators to work in a small machine shop. Flexible hours, advancement opportunity. Ideal for lower classman. Near Market St. Subway-Fkd. Elevated train. Call JE-5-3476

TRAVEL FREE AND EARN CASH TOO: S. America, Africa, Europe, Asia. Enroll colleagues in our Adventure Tours, 1430 Mass. Ave., Harv. Sq., Cambridge, MA. 617-876-0533. We need a campus rep. UP102978

DO SOMETHING EXTRA WORTHWHILE this semester with Project Chaver, the Jewish "VISTA CORPS" of Philadelphia. Join the community of college and grad students helping disadvantaged Jewish people. Please call EV6-5460. UP102978

ACNE PROGRAM STARTING: If you have ACNE, we will PAY you to use new products. PLEASE CALL 563-7330 Paddington Testing Company.

ADDRESSERS Wanted Immediately! Work at home - no experience necessary - excellent pay. Write American Service, 8350 Park Lane, Suite 127, Dallas, TX 75231.

HELP-WANTED: Earn up to \$200 selling Campus Discount coupon books in your spare time. Call 222-2680 between 5:00 and 6:00 pm to start today.

ROOMS Available, male or female needed, good living aspects. Call 386-1737 after 6:00 evenings.

ROOMMATE NEEDED: Male Drexel student has 2 bedroom apartment at 36 & Powelton (next to Frats and Dorms) rent is only \$80 a month. I have most of the furniture and 2 beds. Rent includes all utilities except elec. Apt. has stove & refrigerator. Call (609) 428-0384 after 5:30, ask for Ralph.

35 MM CAMERA for sale. Minolta XG-7 & auto-flash. Practically New. Call Linda (609) 764-9239.

EARN OVER \$650 A MONTH RIGHT THROUGH YOUR SENIOR YEAR.

If you're a junior or a senior majoring in math, physics or engineering, the Navy has a program you should know about.

It's called the Nuclear Propulsion Officer Candidate-Collegiate Program (NUPOC-C for short) and if you qualify, you can earn as much as \$650 a month right through your senior year. Then after 16 weeks of Officer Candidate School, you'll receive an additional year of advanced technical education. This would cost you thousands in a civilian school, but in the Navy, we pay you. And at the end of the year of training, you'll receive a \$3,000 cash bonus.

It isn't easy. There are fewer than 400 openings and only one of every six applicants will be selected. But if you make it, you'll have qualified for an elite engineering training program. With unequalled hands-on responsibility, a \$24,000 salary in four years, and gilt-edged qualifications for jobs in private industry should you decide to leave the Navy later. (But we don't think you'll want to.)

Ask your placement officer to set up an interview with a Navy representative when he visits the campus on Nov. 30, or contact your Navy representative at 564-3820. If you prefer, send your résumé to the Navy Nuclear Officer Program, Code 312-B537, 4015 Wilson Blvd., Arlington, Va. 22203, and a Navy representative will contact you directly. The NUPOC-Collegiate Program. It can do more than help you finish college: it can lead to an exciting career opportunity.

NAVY OFFICER. IT'S NOT JUST A JOB, IT'S AN ADVENTURE.



OPEN 7 DAYS
3942 Chestnut Street • 222-4250

Free Salad Bar
Draught Beer
8 Flavors
TUES. NITE
BEEF SALE
8 oz. Sirloin Steak 3.25

8 pm WED NITE 2 am
GENESEE PARTY
2-1
Thurs. Nite
Double Cheeseburger
Super Sour Sale

FRI. - SAT.
PARTY TIME
SUN.
BEEF SALE

LETTERS

The TRIANGLE welcomes letters reflecting readers' thoughts on the contents of this newspaper. Please address all letters: Editor, Drexel Triangle, c/o Drexel University, 32nd & Chestnut Sts., Room 3014, EAC, Philadelphia, Pa. 19104. Names withheld upon request, but we must have the name of the correspondent. Thank you.

Re: Sports

Sirs:

I am Disgusted. What once was a good, vibrant newspaper has turned into Engineering Quarterly. I am not knocking engineers, for I myself will soon be one, but rather the boring, bland, computer output style of the October twentieth issue. I had the pleasure of reading your paper during the last basketball season. It showed the way your paper should be; exciting and entertaining.

But this week, after reading the sports section, I was Insulted. We, the readers, are not ignorant. Finding very little coverage of major intercollegiate sports, NO coverage of intramurals, and no feature articles was bad enough, but to be replaced with a half-page article on the Hockey Club, and a reprint of a swim team story is inexcusable. Your next sports byline should read, "The Triangle assumes no responsibility for this sports layout; it was butchered by some bored Engineer." Try to write a paper, not a logbook.

Sincerely,
T. Zajac, et.al.

Re: Mitch Plotnick

Letter to the Editor

It is a shame to see the talents of Mitch Plotnick go to waste by the staff of the Triangle. The sports section of the Triangle WAS the paper's strongest feature. The

Sportscast (the column written by Mitch) was one of the best displays of progressive journalism in the paper. There was a definite change for the worse in the appearance of the sports section since Mitch's departure.

Being on Mitch's staff, I, more than anyone else, feel the loss of Mitch since I could appreciate all that he did for the whole paper, not just the sports section.

I just hope that everyone else realizes what a great loss Mitch is and that the Triangle would try to get Mitch back before it is too late.

Jeff Riesenfeld
Member of Triangle sports staff

Editor's Note: Mitch Plotnick chose to resign as Sports Editor on Oct. 13, 1978 because, in Mitch's words, "The Triangle's present sports staff consists of two writers. ... They are Willie Conner Jr., and myself." He developed a list of several writers in order to build a new sports staff. Mitch has asked that he not be considered for Sports Editor in the

future. The Triangle has a responsibility to report the activities of the Hockey Club as well as the Soccer Team. The articles on the Swim Team were, to the best of my knowledge, not reprints.

Wrestling

Continued from page 11

3. If Eph remains healthy this year he might pull a few more upsets.

Dave King: "From 158 to 190 Dave gave me everything he had. Whenever I was stuck for a man last year I knew I could depend on Dave. A lot of his 10-6 record was against guys who had 10 to 20 pounds on Dave."

Another one of those amazing freshmen from last year, Dave will be looking at the 167 or 177 pound spot to call his own.

Dave Pecunia: "From Puerto Rico, Dave is one of their top freestyle wrestlers; however, he has found it hard to make the transition to Collegiate Style wrestling. If Dave decides to drop to his expected wrestling weight, I'm sure there'll be a spot on the team for him."

Dave has an amazing amount of ability, but has a hard time in the upperweights, if he could get to 142 he would be a great asset to the team.

Bob Zerca and Phil Koehler: "These two guys look to be a big addition to this year's team with the experience they gained last year while they were red-shirting."

Bob, as a freshman, had a 10-3 season and felt he needed another year of collegiate wrestling before he could be truly effective on the mat. As a result, he sat out a year and entered as many tournaments as possible.

Phil, as a freshman, decided to sit out a year to assure himself of his surroundings. He is now looking to push Lou Bernadino out of his spot. Tom Herr: "Tom last year was the team heavyweight, and we hope, he can help us this year."

It looks as if Tom might have to share that responsibility this year. With the upcoming freshmen, there came some pretty big boys.

DREXEL TRIANGLE
October 27, 1978 Page 5

This year two wrestlers are contemplating red-shirting, Tony Coppa and Greg Brown. During the year they will work on their skills and pick-up as much experience as possible on the tournament circuit.

As you can see, Coach Childs is very optimistic about the upcoming season. And rightfully, this year he'll have depth at every weight, with two or three guys battling it out for every position.

His first big test will be on November 4, at the York College Tournament, some big wrestling schools will attend, such as Shippenburg, Lock Haven and East Stroudsburg. Drexel will attend with the hopes of getting some experience for the freshmen on the line-up.

XEROX
2¢ / COPY
(SUNDAYS ONLY)

REPLICA-III
OPEN 7 DAYS
(NEW EXPANDED HOURS)

SELF-SERVICE XEROX

MON. - SAT. 4¢/COPY
SUNDAY SPECIAL 2¢/COPY

OTHER SERVICES
Resume Specialists
Color Xerox (50¢/copy)
Xerox Reductions
Fast Film Processing

REPLICA III HOURS
Mon. - Thurs. 8 am to 9 pm
Fri. 8 am to 7:30 pm
Sat. 10 am to 4 pm
Sun. 2 pm to 7 pm

REPLICA-III 3736 WALNUT ST. 386-3200

SELF SERVICE ONLY AT REPLICA III

REPLICA I
25 S. 17th St.
563-4777

REPLICA II
1328 Walnut St.
KI 5-8545

REPLICA III
3736 Walnut St.
386-3200

REPLICA IV
226 S. 40th St.
386-4500



REPLICA



the creative quick printing system

Need a Good Laugh?
THINK "JAILHOUSE"

Live Comedy Every Saturday
After 9 P.M. Music, too.

Cozy Cabaret Setting • New Talent Welcome
3132 Market Street Admission Only \$1

Interested in earning extra cash?

Ivy Research

is looking for healthy male and female students to participate in controlled medical research.

If you have

- eczema
- dry skin
- athletes' foot
- dandruff
- acne

We do patch testing of:

- consumer products
- bath soaps
- cosmetics
- perfumes
- anti-perspirants
- paper & cloth products
- etc.

Call-Mrs. Mary Yardley at EV 7-8400 for more information



IVY RESEARCH LABORATORIES, INC.
UNIVERSITY CITY SCIENCE CENTER 2nd FLOOR
N.W. CORNER 34th and MARKET STREETS

Fraternity life part 3

What is a bid?

by Owen Durkin

Upon arrival at Drexel, many freshmen find that their life here is much different from that of high school and home. New terms become part of a Drexel student's daily vocabulary. Terms such as

"add-drop", "DAC", "EAC", "pass-fail", "mixers", "Fraternities", "Togas", etc., have meaning where there was none before. Another word which is new and often misunderstood is the term "Bid."

Simply put, a bid is a formal link in the informal process of becoming a member of a fraternity or sorority. This process is marked with formalities, one of which has been going on all during the fall term, known as "Rush."

Fall rush is the process whereby non-members meet the fraternities and sororities and eventually become members of the organizations.

Making new friends is something that comes naturally, so why all the fuss with formalities? Well, the bid process was designed to conform to University policies and to insure equal competition and fairness among the fraternities and sororities.

The point to be made is this: Do not let the bid process scare or confuse you. With a small amount of information you will have no problem selecting the group you wish to join, so relax, and keep reading.

By this time you will probably have in your mind a few of the fraternities or sororities which you would like to join. At the same time, these groups have gotten to know you and surely want you to be a member. One thing to realize is that the first step toward formal membership must come from the



A Photo finish at the chariot races

photo by Patty Enright

Greek Week Results

	Fraternity	Sorority
Pie eating	Lambda Chi Alpha	Alpha Sigma Alpha
Zipper Strip	Tau Kappa Epsilon	Alpha Sigma Alpha
Trike Race	Phi Sigma Kappa	Delta Zeta
Egg Toss	Theta Chi	Alpha Sigma Alpha
Chug-offs	Pi Kappa Phi	Alpha sigma Alpha
Pie Throw	Sigma Pi	Alpha Sigma Alpha
Greek God	Lambda Chi Alpha	
Chariot Judging	Lambda Chi Alpha	Phi Sigma Sigma
Greek Goddess		Phi Sigma Sigma
Shot-a-minute	Pi Kappa Phi	Alpha Sigma Alpha
Chug and Run	Delta Sigma Phi	Phi Sigma Sigma
Tug-o-war	Tau Kappa Epsilon	Alpha Sigma Alpha
Chariot Race	Lambda Chi Alpha	Alpha Sigma Alpha
Quarter Keg	Tau Kappa Epsilon	
Overall winners	Sigma Alpha Mu	Phi Sigma Sigma
	1. Lambda Chi Alpha	1. Alpha Sigma Alpha
	2. Tau Kappa Epsilon	2. Phi Sigma Sigma
	3. Sigma Alpha Mu	3. Delta Zeta

fraternities or sororities in the form of a bid. A bid is no more than a formal invitation to join a specific group. You may receive more than one bid, depending on how many friends you have made and how many of the groups you have personally met. Bids are available to be picked up on Friday Nov. 3rd from 9-3 right next to the main desk at the Creese Student Center.

From there, the choice is yours. The fraternities hold a bid acceptance dinner at the time (usually Friday) and the place announced on the bid. You are free

to choose any group which has given you a bid. If you do not receive a bid from a group which you want to join, check with a member, since mistakes do occur. The sorority system is somewhat different, so see a member if you have any questions.

Please remember that your acceptance of a bid is in no way final or binding. The fraternities and sororities look forward to you becoming a member and will be glad to answer any questions you have concerning the bid process.

Next week: PLEDGING

women's medical center

Confidential Service

birth control counseling free early detection pregnancy testing outpatient abortion facility

(215) 265-1880

20 minutes from Philadelphia
DeKALB PIKE and BOROUGH LINE ROAD
KING OF PRUSSIA, PA 19406

Consumer be Wary ...

Alcohol and birth defects

by Shirley Huber

Your unborn baby may be drunk--that is, if you are pregnant and have had one too many (drinks). If you are inclined to chuckle, consider some recent studies conducted by the National Institute on Alcohol Abuse and Alcoholism (NIAAA) linking alcoholism and birth defects.

Thousands of babies are born

annually with physical and/or mental defects as a result of heavy drinking by the mother during pregnancy. Infants with this "Fetal Alcohol Syndrome" exhibit growth abnormalities, congenital malformations, mental retardation, and abnormal behavioral characteristics.

"Too much" alcohol is considered to be two or more drinks (over one ounce absolute alcohol) per day,

although it is thought that consumption of even minute amounts can be detrimental to the fetus. Alcohol and pregnancy just don't mix.

Since alcohol passes easily through membranes, alcohol in a pregnant woman passes readily through her blood system to the placenta and subsequently to the unborn child. One of the greatest complications is that the concentration of alcohol in the mother's bloodstream is not diluted by the time it reaches the fetus; thus, the unborn child is receiving in megadoses, as its body mass is so much smaller.

The fetus is also handicapped with its undeveloped liver -- the prime organ for removing alcohol from the blood; the fetus must "hold" any excess alcohol until diffusion occurs across the placenta into the mother's system, which can only occur when the mother's blood alcohol level decreases.

Prevention of fetal alcohol syndrome requires no fund drives for money or waiting for new medical or scientific breakthroughs. The solution is at hand: merely avoid alcohol during pregnancy. While it is best to abstain completely, a limit of two drinks per day at infrequent intervals and a general awareness of drinking patterns during pregnancy may help a mother to avoid harm to her unborn child.

PRATT & WHITNEY AIRCRAFT GROUP

A division of UNITED TECHNOLOGIES

will be

ON CAMPUS

November 8

to interview candidates for attractive opportunities in HIGH TECHNOLOGY

Consult your Placement Office for degree and field of study requirements

An Equal Opportunity Employer



Roll 'em!!
with

BOX of RAIN'S

3 for 2 rolling paper sale

(Buy 2, get 1 Free)

Also see our Bongs, Clips Pipes, Whippets; and MORE!

in Houston Hall
3417 Spruce St.
Call us at 243-8670

ER. Yokum and company

Featuring MONDAY
COOKED MARYLAND HARDSHELL CRABS AND BEER NITE \$3.00

TUESDAY
SHRIMP AND BEER NITE \$3.00

WEDNESDAY
FRESH FISH NITE \$1.95

THURSDAY
SPECTACULAR LIBATION NITE — ALL OUR FAMOUS DRINKS AT VERY AFFORDABLE PRICES

4002 Chestnut St.
EV 2-1940
Open 7 Days

WANTED BLOOD & PLASMA DONORS

EARN \$65 PER MO ON OUR PLASMA PROGRAM

CALL 228 - 2343 FREE INFORMATION

INTERSTATE BLOOD BANK INC.

2503 N. Broad St.

Behind the scene at ... Triangle

photos by Paul Simon



Ad Manager, Stu Kopperman, discusses the ads with his staff.



Dave Husman, Editor, discusses a story with a reporter.



Owen Durkin races the deadline to get his story in.



The actual positions of the stories are determined during layout.



The Features Editors, plan the details of their section while getting the copy ready for laying out.



Two staff members take a well earned pizza break.

FNF HALLOWEEN SPECIAL TRIPLE FEATURE

Frankenstein Starts approx. 5 & 9:35
Creature From the Black Lagoon Starts approx. 6:15 & 10:50
(in 3-D—Complete with Glasses)

PSYCHO

Starts approx. 7:40

Friday, November 3, 1978

Starts at 5 p.m.
Continuous Showing
\$1.00 Admission-Stein Aud.

Free to persons in costume!



"Wow, this is good stuff!"



If you have a special occasion to change your appearance for, stop in at Wayne Toy Town. Even if it's just Halloween, we have hundreds of professionally crafted adult and children's masks, wigs, make-up, children's costumes and costume accessories. In fact, we have the biggest and best selection to be found anywhere in the Delaware Valley. So, if you want to stand out in a crowd this Halloween, stop in to Wayne Toy Town.

WAYNE TOY TOWN

163 E. Lancaster Ave
Wayne Pa.

All major credit cards accepted

Looking Ahead...

To Drexel

Wine & Cheese

A wine and cheese party will be held on Tuesday, Oct. 31 in 3024 EAC from 1-3:30. Admission is free! Sponsored by SPB.

FNF

Come to FNF's Halloween Special in Stein Auditorium on Friday Nov. 3. Continuous showings from 5 pm of Frankenstein, Creature From the Black Lagoon (in 3D, with glasses!), and Psycho.

To Special Events

Black Women

Olivia Recording Artists Linda Tillery and friends in concert - "The varied voices of black women" - Friday, November 3rd at 8 PM - St. George's Methodist Church, 235 North 4th Street (between Race and Vine) - free parking at the church - tickets are \$4.00 in advance, \$4.50 at the door - call 243-5110 for further information - sponsored by Women's Resources.

Stargazing at Swarthmore

Tues., Nov. 14. Visitors' night at Sproul Observatory. We regret that our facilities cannot accommodate organized groups. Children must be in the seventh grade or above. 7:00-8:30 p.m.

Winales

Thurs., Nov. 9. Sonatas for cello and piano by Beethoven and Brahms, and George Crumb's *Vox Balaenae*, in association with the Biology Department's symposium on animal communication. Barbara Haffner, cello; Carole Morgan, flute; Lambert Orkis, piano. Sponsored by the William J. Cooper Foundation. Lang Concert Hall. 7 p.m. *Vox Balaenae* will be performed after intermission (approximately 8 p.m.), followed by Dr. Roger Payne's lecture "Voices in the Sea: Communication among Whales."

Holocaust Art

"We want to be among the living, at least on paper." "The Living Witness: Art of the Concentration Camps" will be hosted by the Museum of American Jewish History from October 18th to December 31st. The exhibition is being coordinated by Mary Costanza and is sponsored by the International Conference on the Lessons of the Holocaust. Its opening coincides with the opening of the Conference.

The Museum of American Jewish History is located at 55 North 5th Street, Philadelphia. Its hours are 10:00 a.m. to 5:00 p.m. Sunday through Thursday; 10:00 a.m. to 4:00 p.m. Friday; closed Saturday and Jewish Holidays.

For further information, please call Paula Bloom at 923-3811.



Al Stewart

To Music

Tower

11/3 FUNKADELIC/Brides of Funkenstein \$8.00, \$7.00, \$6.00 8:00 PM
11/4 JANIS IAN \$7.50, \$6.50, \$5.50 8:00 PM
11/10 WEATHER REPORT \$7.50, \$6.50, \$5.50 8:00 PM
11/17-11/18 AL STEWART \$8.00, \$7.00, \$6.00 8:00 PM
11/19 CAROLE KING & Navarro \$8.50, \$7.50 8:00 PM
tickets on sale Sat. 10/14

Spectrum

OCTOBER:
30, Monday BOSTON CONCERT - End Stage/Dance Reserve \$6.75 GENERAL ADMISSION ONLY! Also appearing: Sammy Hagar
31, Tuesday BOSTON CONCERT - End Stage/Dance Reserve \$6.75 in advance; \$7.75 day of show and \$8.50 special reserved. Also appearing: Sammy Hagar.
NOVEMBER:
4, Saturday BOB SEGER CONCERT - 8 p.m. Spectrum Theatre/Reserved \$5, \$6, \$7
10, Friday DOOBIE BROTHERS CONCERT - 8 p.m. End Stage/Dance-Reserve \$8 General Admission ONLY!
20, Monday QUEEN CONCERT - 8 p.m. End Stage/Reserve \$8.50, \$7.50 & \$6.50. Sale Date: Saturday, October 21, 1978.
22, Wednesday MOODY BLUES CONCERT - 8 p.m. End Stage/Reserved \$8.50 SIDE VIEW ONLY!
27, Monday GRATEFUL DEAD CONCERT - 8 p.m. End Stage/Reserved \$6.50, \$7.50 & \$8.50 Sale Date: Saturday, October 21, 1978.

Bijou

11/1-11/4 Eric Anderson/ Johathan Edwards
11/8-11/11 Johnny's Dance Band / Ron Crick

Academy

TOM WAITS & LEON REDBONE

It's the Darma Bums, along the Burma Shave Road, on Monday evening, November 20th, when Goldfarb - Delfiner Productions, Lt. present Tom Waits and Leon Redbone at the Academy of Music.

Tickets are \$8.50, 7.50 and 6.50 and are available at the Academy Box Office, Wanamakers - Center City, Bag & Baggage - Wilmington, Central City Ticket Agency, all Ticketron locations, 885-2515, and Chargit (toll-free) 800-223-0120.

Schubert

11/16 NEIL SEDAKA/Paul Davis \$8.50, \$7.50, \$6.50 8:00 PM
tickets on sale Mon. 10/16

To Theater

Theatre 313

Sis Boom Bah!! RaH RaH RaH!! And Three Cheers for "VANITIES," that spirited comedy about high school days, college proms, football rallies and class reunions, arrives in Philadelphia after three triumphant years at Off-Broadway's Chelsea Theatre (where it is currently running).

This lively, imaginative play about 11 years in the lives of three girls who started out as high school cheerleaders, opens for previews on Tuesday, Oct. 17 at the newly renovated Theatre 313, and runs through Sunday, Nov. 12.

Performances of "VANITIES" at Theatre 313, 313 S. Broad St. (at Broad and Spruce) are Tues. thru Fri. Eves. 8 p.m., Sundays 3 and 7:30 p.m.--tickets \$7.50 and Saturday evenings at 7 and 10 p.m.--tickets \$8.50 Tickets are now available at the Shubert Theatre Box Office, Ticketron, and CHARGEIT. 1-800-233-0120.

Annenberg

Tom O'Horgan and La Mama E.T.C. are staging Bertolt Brecht's *The Resistible Rise of Arturo Ui* in the Annenberg Center's Off-Broadway's Best Series. The play opens on November 1, in the Theatre of the Annenberg School, for two weeks through November 12.

Performance times for *Arturo Ui* in the Theatre of the Annenberg School are Tuesday through Saturday at 8 p.m., opening night Wednesday, 7:30, Thursday matinee at 1 p.m., Saturday and Sunday matinees at 2 p.m. For information and reservations, call the Box Office 243-6791.

Swarthmore

Sat., Nov. 4. "Macbeth" performed by the Independent Eye. Sponsored by the William J. Cooper Foundation. Lang Concert Hall, 8:15 p.m.

CONTACT LENSES
Bright Eyes Inc.
Included:
Eye Exam, Equip. & Service for one year
HARD \$75 pr.
SOFT \$175 pr.
1420 Walnut Street
Suite 1507, Phila. Pa.
CALL K16-6664

John Saylor's
LSAT-GMAT
TEST PREPARATION CENTER
215-927-6261 800-431-1038
Toll Free

MERION ART CENTER
102 W. LANCASTER AVENUE
ARDMORE, PA.
Across from Gene's
896-6161
Student Discounts
Where you can find all your art and drafting needs.

ENGINEER YOUR WAY TO THE TOP

If you're an outstanding engineering graduate or someone who can master advanced technology, you may qualify for one of our top programs.

Nuclear engineering.
We're looking for men who have a solid foundation in math and physics. Men with superior ability. Men who want to work the energy of the future.

If that's you, look into our Nuclear Propulsion Officer Candidate Program—NUPOC.

You'll spend a year learning the many details of nuclear propulsion plant theory and operation. These details will enhance your ability to solve difficult problems through application of fundamental engineering principles.

Set your sights high. Go Navy.

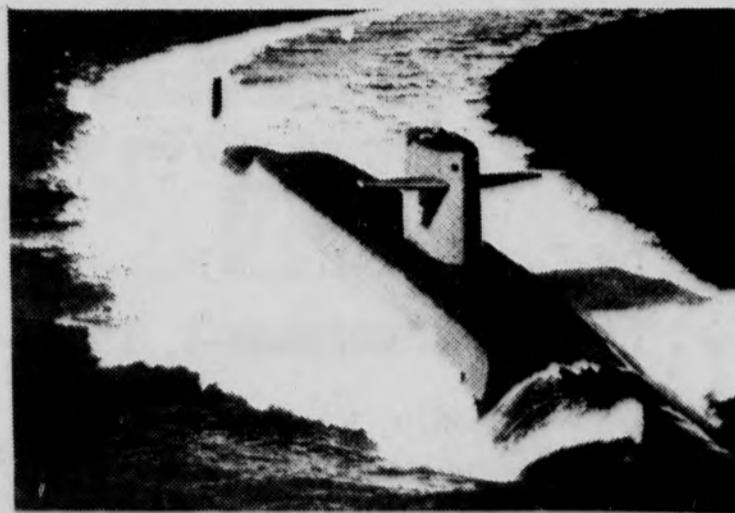
Be someone special. Join the Nuclear Navy.

For more information on how to take off, see your Navy Recruiter in person. Contact the Placement Office for scheduling on: Friday, 10 Nov.

NAVY ENGINEERING PROGRAMS
128 N. BROAD ST.
PHILA., PA. 19102

215-564-3820

NUPOC
The Nuclear Propulsion Officer Candidate Program



**NUCLEAR ENGINEERING.
THE FASTEST WAY UP.**

Six stories, one plot: The Romance of Our Age is Technology.



Rendezvous In Spain.

You're a software applications specialist.

When you picked this career, you never dreamed that one day you'd rendezvous in Barcelona, Spain with two Navy destroyers.

But when your company is Texas Instruments and one of your customers is the U. S. Sixth Fleet, you learn to expect the unexpected.

The destroyers are equipped with TI computers and they need new software fast. You come aboard and sail with the Fleet until your job is completed.

Not a bad assignment for a software specialist named Susie. You're glad you got into technology.



The Salesman's Dream.

You're a TI sales engineer. You've got what is probably one of the most irresistible

selling messages in the history of salesmanship.

It goes like this: "Hold this TI-59 Scientific Calculator in your hand. Now, let's compare it to the most popular compute. of the 1950s — the IBM 650.

"The 650 weighed almost three tons, required five to 10 tons of air conditioning and 45 square feet of floor space. And it cost \$200,000 in 1955 money.

"Now look at the TI-59 Calculator you're holding in the palm of your hand. It has a primary memory capacity more than double that of the 650. It performs its principal functions five to 10 times faster. And it retails for under \$300."

With a story like this, the hardest part of your job is holding onto your sample. You're glad you got into technology.

on a single chip of silicon, the more the average AEG cost goes down.

In short, you make things cheaper by making them more complicated.

Your work made it possible for a TI consumer product that sold three years ago for about \$70 to sell today for \$14.95.

Your future looks wonderfully complicated. You're at 30,000 AEGs per chip now and 100,000 is in sight.

You're glad you got into technology.



Outsmarting Smog.

You've always designed airborne radars for TI customers.

Now, all of a sudden you know your next radar design is going to stay at the airport. On the ground.

It's on the ground that traffic controllers at Los Angeles International Airport have a problem. They can "see" incoming and outgoing airplanes on their radar just fine, so long as the airplanes are in the air.

But when the airplanes are on the ground — touching down, taking off, taxiing, parking — they are sometimes impossible to see and control. Ground smog obscures them.

You believe you have an answer to the smog problem. You dig out the plans for an airborne ground-mapping radar you helped design. You adapt the design so the L. A. controllers can use it to see through smog. It works beautifully.

Today your smog-piercing radar is widely known as Airport Surface

Detection Equipment (ASDE). It's standard equipment at L. A. International and at the airport in Geneva, Switzerland. Other airports with smog and snow problems are expected to have it soon.

You're glad you're in technology.



Oil Sleuths International.

You're a geophysicist. A good one. You could be with any of the big oil companies. But

you wanted to get with a company whose specialty is the same as yours. Exploration.

That's why you're at TI, in Geophysical Service.

TI explorer ships, TI photo-geologic aircraft and TI truck- and tractor-mounted vibrator systems are working all over the world. They're finding oil. And they're identifying areas where no oil exists, thereby saving huge losses in drilling costs.

Also, TI's worldwide computer network and its Advanced Scientific Computer is making 3-D recording and processing possible. This exclusive exploration technique is the only practical way to unscramble "no-record" areas on land and sea.

You're a happy sleuth. You're in on the biggest hunt in history. And your team is out in front.

You're glad you got into technology.



The Incredible Talking Chip.

You're an integrated circuit designer at TI.

You've helped find a way to make a chip talk, something no integrated circuit has ever done before.

First application: an electronic aid that helps children learn to spell. The world's first talking textbook.

And that's just the beginning. The talking chip's potential is mind-bending. You're glad you got into technology.



The Joy Of Complication.

You're in semiconductor design at TI. You love it when people at parties ask you

what you do. You say, "I make things complicated." (Pause.) "In fact, I got promoted recently for creating some major complications."

What you mean (but seldom explain) is this: the more active element groups (AEGs) you can put

If you're not in technology yet, think it over. If you are in technology, talk to Texas Instruments.

Campus Interviews

Nov. 6-7



Send for the 34-page picture story of TI people and places.

Write: George Berryman, Texas Instruments Corporate Staffing, P. O. Box 225474, M. S. 67, Dept. CG, Dallas, Texas 75265

See what TI is doing in:

- Microcomputers and microprocessors
- Semiconductor memories
- Linear semiconductor devices
- Microelectronic digital watches
- Calculators
- Minicomputers: hardware, software and systems featuring software compatibility with microprocessors
- Distributed computing systems
- Electronic data terminals
- Programmable control systems
- Data exchange systems
- Advanced Scientific Computers
- Digital seismic data acquisition systems
- Air traffic control radar and Discrete Address Beacon Systems
- Microwave landing systems
- Radar and infrared systems
- Guidance and controls for tactical missiles
- Worldwide geophysical services
- Clad metals for automotive trim, thermostats, and electrical contacts
- Interconnection products for electronic telephone switching systems
- Temperature-sensitive controls for automobiles and appliances
- Keyboards for calculators and for many other products



TEXAS INSTRUMENTS
INCORPORATED

An Equal Opportunity Employer M/F

I.F. Pigskin Results

by Jeff Riesenfeld

SAM.....7 PKP.....0

The Sammy defense led by Jeff Foster was all over the Pi Kapp offense but the SAM offense could only muster one touchdown. The only SAM touchdown came on their first possession of the game on a Perry Bonifazi to Joe Pane touchdown pass. The key to the victory was the key coaching moves made by SAM coach Dennis Stewart.

TC.....7 DSP.....0

In an event contest, Theta Chi edged out a 7-0 victory on the strength of a Bob Paradis touchdown run and a Bob Paradis extra point. The Theta Chi defense shut down the Siggie offense and Bob Briton intercepted 3 passes.

SAE.....13 PSK.....7

SAE won their first game of the year on the strength of a Tony

Cattalino touchdown run. Phi Sig's touchdown came on a halfback option pass from Steve Weinberg to Steve Allen. The extra point was good on a Steve Allen pass from John Davies.

APL.....33 TEP.....0

In a battle for first place in the Blue Division, Apple Pie rolled over TEP by an impressive margin of 33-0. The Pie scored on the last play of the first half on a run by Joe Hannah and an extra point run by Hannah to give the Pie a 7-0 halftime lead. The second half was all Pie as they rolled up 26 second half points. Steve Gerrin opened up the second half scoring on a run. The next Pie score came on a Hannah to Joe Brooks touchdown pass. The final Apple Pie scoring came on Joe Brooks' second touchdown of the season and of the game. Mark (Pretty Boy) McBrinn looked good but could not muster up too much offense.

The Apple Pie defense shut down TEP's potent offense and held them to no first downs.

PLP.....19 LCA.....12

In a wide open contest, Pi Lam squeaked by Lambda Chi 19-12 to even their record at 2-2. Lambda Chi scored first on a run by Keith Burns. Pi Lam tied the score on a Rich Maag to Bruce Sullivan pass. Dave Fanok of Lambda Chi intercepted a pass and ran it back for a touchdown to give Lambda Chi a 12-6 lead. Sullivan and Maag hooked up on another scoring pass to give Pi Lam a 13-12 lead as Jeff Fluevog scored the extra point. The Pi Lam defense held Lambda Chi off the board on a goal line stand while the score was 13-12. Todd Rittenhouse led the Pi Lam defense with 2 interceptions and Steve Schlatter had one. The final Pi Lam touchdown came on the last play of the game on a Rich Maag run.

SP.....16 TKE.....7

Sigma Pi remained undefeated and in first place by defeating TKE 16-7. Sig Pi dedicated this game to Mark (Potsie) Potteiger who was injured and could not play. Sig Pi opened the scoring on an Engle to Danny Truman pass. Engle ran in the extra point to give Sig Pi a 7-0 lead. Lou Bernadino of Sig Pi caught quarterback Glenn Seagraves in the end zone for a safety and a 9-0 lead. TKE then struck back with a touchdown of their own on a Glenn Seagraves to Dave Gillen pass and the extra point was good on a Seagraves to Wisla pass. This cut the margin to 9-7. But, Sig Pi scored again on the last play of the half on a Terry Engle to Art Bucci pass. The extra point was good on an Engle to Scott Gsell pass. There was no scoring in the second half and Sig Pi held on to win.



I.F. Pigskin Results

APL.....33	TEP.....0
SP.....16	TKE.....7
PLP.....19	LXA.....12
TX.....7	DSP.....0
SAM.....7	PKP.....0
SAE.....13	PSK.....7

Blue Div.	Won	Lost	PF	PA
Apple Pie	4	0	101	19
Theta Chi	3	1	42	26
TEP	3	1	68	52
SAE	1	3	19	55
Delta Sig	1	3	26	34
Phi Sig	0	4	15	55
Gold Div.	Won	Lost	PF	PA
Sig Pi	4	0	71	13
TKE	3	1	79	22
SAM	2	2	25	41
Pi Lam	2	2	25	57
Lambda Chi	1	3	26	52
Pi Kap	0	4	0	43

A telephone visit is cheaper than you think!

Price of a 10 minute visit by phone.

Clip and hang near phone

	ALLENTOWN, PA	BOSTON, MA	CHICAGO, IL	HARRISBURG, PA	INDIANA, PA	PHILADELPHIA, PA	PITTSBURGH, PA	SCRANTON, PA	STATE COLLEGE, PA	WASHINGTON, DC	NEWARK, DE
ALLENTOWN, PA	-	217	231	191	211	165	211	178	198	204	184
BOSTON, MA	217	-	231	230	230	217	231	217	230	230	230
CHICAGO, IL	231	231	-	231	231	231	230	231	231	231	231
HARRISBURG, PA	191	230	231	-	191	191	198	191	178	197	197
INDIANA, PA	211	230	231	191	-	211	165	198	178	204	204
PHILADELPHIA, PA	165	217	231	191	211	-	211	191	198	204	145
PITTSBURGH, PA	211	231	230	198	165	211	-	211	191	204	217
SCRANTON, PA	178	217	231	191	198	191	211	-	191	204	197
STATE COLLEGE, PA	198	230	231	178	178	198	191	191	-	204	204
WASHINGTON, DC	204	230	231	197	204	204	204	204	204	-	197
NEWARK, DE	184	230	231	197	204	145	217	197	204	197	-

Anywhere in Pa. or Del. - to anywhere in continental U.S. (Except Alaska) - 10 minutes between 5-11 p.m. Sun. through Fri. will cost you no more than \$2.57 plus tax.

5 p.m.-11 p.m., Sunday through Friday. (does not include tax)

EVENINGS!

I.F. Leading Scorers

TD's	Extra	Points	Total
Engle, Sig Pi	6	1	37
Hannah, Apple Pie	4	1	25
Ellis, TEP	4	0	24
Bilodeau, TEP	4	0	24
Wisla, TKE	3	4	22
D. Seagraves, TKE	3	1	19
Sullivan, Pi Lam	3	0	18
Pane, SAM	3	0	18
Perrin, Apple Pie	3	0	18

99 EAST 785 S 3rd Street

99 WEST 28 Street & Fairmount Ave.

FOOD

IT'S ALL 39¢ 99

FREE GRANOLA & POPCORN

OPENS SUNDAY

WHY PAY MORE?

Xerox Copies

Campus Copy Center

3907 Walnut Street
382-1829
Next to Baskin-Robbins

Lowest Prices on Campus

Jobs

Our unique, proven, successful professional resume services help you get Better Jobs Larger Salaries Faster

Special Student Rates

CALL 568-7891

or stop in our downtown office, at 2 Grand Plaza Suite 1010 Philadelphia, Pa.

Also typing of Reports, Thesis, Dissertations.

Best Resumé Service



Bell of Pennsylvania

*this rate does not include tax and does not apply to calls to Alaska or Hawaii or to operator assisted calls such as credit card, collect, third number billed, person-to-person and coin phone calls.

SPORTS SCHEDULE

TUESDAY, OCT. 31		
Field Hockey vs. La Salle	Away	3:00
W. Tennis vs. Delaware C.C.	Home	3:00
Volleyball vs. Bryn Mawr, LaSalle	Home	4:00
WEDNESDAY, NOV. 1		
Soccer vs. Rutgers	Away	2:00
THURSDAY, NOV. 2		
Field Hockey vs. Chestnut Hill	Home	3:15
W. Tennis vs. Villanova	Home	3:00
Volleyball vs. Cabrini	Away	7:00

Tennis serves up a win

by Willie Conner Jr.

"We knew Beaver was a tough team and that to win, we had to be willing to not give away games because of careless mistakes or a lack of concentration," emphasized Beth McCormick of the women's tennis team.

Drexel's women's tennis team has strung together a two game winning streak. The interesting feature about the streak is that it developed after the team played three matches in four days. Drexel lost to Widener 3-2, defeated Textile and Beaver, 4-1, for back-to-back wins. Katie McDevitt added about the two wins, "We've been playing teams with players with intelligent strategies. We just had to outsmart them."

For Beaver the scoring shaped up this way in singles: Beth McCormick won 7-5, 6-1, over Anita D'Amore. Dawn Spikes stayed strong with a 6-1, 7-5 win over Kim Masle. Karen Colquitt won over Sherri Kasloss 6-7, 6-2, 6-4.

Ann Robrient of Drexel twisted her ankle in the doubles competition, so the Exley-Robrient,

Volleyball

Continued from page 12

replayed after Drexel had salvaged the ball. Rosemont re-captured possession and never lost it.

At times Drexel did make mistakes on serving and returning. This happened at crucial times. However, the team, while fighting multiples of the game, stayed in there and as Novack insinuated, "regrouped." However, it still wasn't enough to win.

Newburg-Cassela match is designated unfinished. Earley and Devitt continue their winning ways as they won over Beers and Weinbenn 7-6, 6-2.

Coach Nance Knopp has this to say about her team, "We're playing better and better each time out. They're executing on the court." McCormick added, "We finally got our act together."

by Charles McGonigle
If you've seen Coach Childs around campus the past few weeks and don't understand why he's smiling, maybe it's because last Tuesday he officially started practice for his wrestlers. Not that the coach enjoys to see his wrestlers sweat, but on October 17, he invited back a full varsity lineup from last year, as well as some very promising freshmen.

Though it's too early to make predictions, the team's record last year was the best they've ever had, at 10-6, with some impressive defeats against Penn, Delaware, and American.

This is what Coach Childs said about some of his key returnees: **Lou Bernardino**: "Lou is not only a value to me as a wrestler but also as a leader. He's my right-hand man who the team leans on for guidance and support."
Bill Cona: "Bill as a 118 pounder

then at 126 was the person I depended on to set the tone of the match. He's the foundation on which the team looks to before they go out to wrestle."

Bill is presently starting his third year on Drexel's wrestling team. Although Bill's record is 11-0 and 12-3, the coach is afraid Bill lost some of his form prior to the ECC's (East Coast Conference) and will work with him in the preseason, to regain that edge.

Phil Brinkheide: "Phil was my gift from heaven last year, with his 11-1 dual match season, I gained a lot more wins at 150 than I expected. He also placed third in the ECC."

Also to add to his list of accomplishments Phil received Outstanding Wrestler and Outstanding Freshman. The coach looks to Phil to dominate 150 pound classmates Matt and Dave

"Between these two guys they split the major part of the 134 and 142 wrestling responsibilities. As Freshmen they were a great asset to the team and we're looking for big things from them in the next couple of years."

Matt is presently working out with Youngstown State while he's on co-op and will rejoin the team in January. He placed fourth in the ECC.

Dave, with the experience he gained last year, should be a real terror during the season.

Eph Toy: "This young man is my clutch hitter on the team. He had two big wins against Delaware and American to help us upset both teams. And in the Columbus match he came through for me. I'm expecting a lot out of Eph this year."

Although Eph only wrestled 9 matches last year, his record was 6-

Drexel Pizza Restaurant

107 N 33rd St.
EV2-7413

Serving: Breakfast-Lunch-Dinner

• Sandwiches
• Hot Platters

• Italian Dishes
• Sea Foods

Hours:
Mon. thru Fri.-7am to 10pm
Sat.-8am to 10pm
Sun.-9am to 10pm

"10 Minute Take Out Service"

Unique Management Intern MBA Program

This outstanding educational plan involves six months of classes; followed by a six-month internship of paid professional work experience; then nine more months of classwork.

The internship concept, which Northeastern pioneered, gives you practical, real-world experience in your own field of interest. It helps you pay for your education. And it often leads to important contacts for the future.

Classes begin in June and January

For further information, send to: X

Susan V. Lawler
Coordinator, Management Intern Program
Graduate School of Business Administration
Northeastern University
360 Huntington Avenue
Boston, Massachusetts 02115

Name _____
School _____ Class _____
Address _____
City _____ State _____ ZIP _____

Northeastern University

So you're going to college to be a lepidopterist.

Will You Have A Job When You Graduate?

You like catching, mounting and cataloging butterflies. Is there any reason for you to believe your career will take off after you graduate? In the next issue of *Insider*—the free supplement to your college newspaper from Ford—college degrees and careers they prepare you for will be discussed. And while you're enjoying



your *Insider*, check out the sharp new Fords for '79. Like the New Breed of Mustang with dramatic new sports car styling. And Fiesta—Wundercar. Ford's fun little import. You can bet Ford has just about everything you'd want to drive.

See if your college education and career hopes are working together, read the next *Insider*. And check out the new lineup of '79 Fords. They'll both put you on the right road.

Look for *Insider*—Ford's continuing series of college newspaper supplements.

FORD

FORD DIVISION

BLUEGRASS BANJO-RE

EVERY TUESDAY & THURSDAY NIGHT

Good Music, Good Folks
Good Times!

October 31
Scrimshaw
Halloween Costume Party

November 2
Raintree

NASHVILLE EAST

Route 73 &
Haddonfield Rd.
Pennsauken, N.J.
(609) 662-1212



Willy Rapp attempts a free kick against Penn's defenders

photo by Tom Ross



photo by Tom Ross

Drexel falters against Penn

by Willie Conner Jr.

Drexel's soccer team lost at home to Penn, 2-0, in a contest in which could have resulted a notch in Drexel's win column. Penn leads the game series 14-3, however, Drexel won the last meeting 4-0 prior to Tuesday in 1974. Unfortunately on a clear sunny day, Drexel provided a rain of mistakes, as well as Penn, but Penn won.

In the early part of the first half, Penn took the initiative as they rumbled down the field toward Drexel's goal. Sean O'Donnell and Vince Mandato got Penn's offense cranking as they both missed the goal by inches. Mandato shot wide and O'Donnell was just over the goal. Drexel unveiled their offense with the assistance of Willy Rapp as he began a lot of drives down field. However, when he was in position to pass to a forward within scoring range of 15 yards or less, there were no forwards around. He was only confronted by Penn. They kindly relieved him of the ball.

It was more exciting to observe whether or not Drexel could make it down field. Their passing seemed as if the wind was playing havoc. However, there was no wind. Yes, the passing was that bad. Despite these problems, at times Drexel

was able to overcome and show previews of what they really could do. They strung together drives that resulted to a free kick from a penalty to Willy Rapp. He missed the 15 yard shot. Penn's goalie Brad Hunt was saving goals left and right which didn't make Drexel's endeavors any easier in scoring. Drexel's goalie Ron Panetta wasn't exactly leaving his front door open for easy scoring. He came up with saves to annihilate sometimes continuous Penn drives. So, for the first half, Drexel's defense had made their presence known. It was up to the offense to catch the fever and bring down roaring scoring thunder upon Penn.

"Their defenders kept beating us to the ball. It really came down to who really wanted the game," emphasized Willie Rapp.

"When things don't go your way, you keep pushing and pushing. Eventually, your spirits break," explained Coach Bowie.

When things are not going well it appears to invite more trouble. The referees understood that this game was a rivalry and that they had to maintain absolute control. However, their calls were inconsistent. This compounded matters for Drexel as they became slowly entombed into their own

frustrations along with the oscillating refereeing. However, in the second half, Drexel came out with all engines in full power as Jay High with decent ball movement went down field, took a shot, and didn't catch Penn's goalie napping. The action see-sawed with both teams moving the ball, but Drexel had not yet found that continuity.

At 12:15, Penn's Rich Pietrowski put Penn on the board from a chip shot from a penalty. Shortly af-

terward, Rapp got a chance to even the score on a penalty shot. He missed a chip shot. He hit the left side of the cage.

Drexel, for most of the second half, stayed on defense. The passing had become sub-zero. The offense was stagnate. At 22:19, Penn put life in the game as Mandato received a pass from Pietrowski from the left side of the cage.

Penn's belief that they had the game locked up allowed Drexel to

dominate the last 15 minutes of the game. However, pulling the game out was not written in Drexel's destiny. There were shots that barely missed the goal. However, the entire game, Drexel had no smoothness in their offense. It was only Penn's ego tripping that allowed Drexel a chance. However, still nothing materialized on the scoreboard. Let's face it, things were in helter-skelter for Drexel the entire game.



Sports

Hockey wins over Radnor

by Anne O'Neil

"We're hot!" exclaimed Michelle Bannes, as Drexel won their second game, against Eastern College in

Radnor, 2-1.

Coach Lillian Haas attributed changes on the offensive line to the victory. Janey Whalen moved from link to wing, and Margaret Pisano moved up to link from center halfback. Jeanine Jakubowski was added to the line-up in Pisano's place. This allowed Pisano more offensive freedom. The move payed off, since she scored both of the teams' goals in the first half.

"It was a nice team effort," commented Haas, "the defense played a nice game, and the forwards were tenacious on offense."

The girls really played well both halves. They never became complacent, even when they had a 2 goal advantage. Eastern probably should not even have scored, since their goal came off the stick of a Drexel defensive player. Kathleen

Whiley was the scorer for Eastern. It was practically the only chance Eastern ever had, according to goalie Lynn Biddle. "The defense is playing good, they hardly let the ball in the circle anymore."

"We're starting to jell as a team. Everyone is encouraging each other," stated Janet Finkelstein, halfback. Captain Roseanna Gunn agreed, saying, "The offense and the defense are beginning to play together which gave us the win."

The team is now at the halfway mark of their season, they are 2-2-1, and according to Coach Haas, "If we can play with as much determination as we did today, we should win the rest of our games, though they are tough." The next home game is today against Swarthmore at 3:30. Try and make it out to the field. They need your support!

Rosemont spikes Dragons

by Willie Conner Jr.

"Both varsity and junior varsity have the experience and know how to play well. So it's best to go back onto the court, get our thoughts together, and remind ourselves that we play as a team and not as individuals," stated Michael Novak of the women's volleyball team.

Rosemont defeated our volleyball team 3 games to 2 games at Rosemont. Drexel won the first 15-11. Rosemont retaliated and won the second, 15-12. Then it seemed as if Drexel was on their way of winning everything as in the third game, they had a commanding win of 15-1. Rosemont was not a team to be denied as they won the fourth game 15-12 and the fifth game 15-9. Rosemont stopped Drexel's three game winning streak.

Drexel had problems getting their thoughts together as they were battling three different things at once. There was just one referee and key calls were missed. Also played havoc with a low net. Still, let's not forget the ourselves.

Drexel is good at spiking and blocking. Even though we realized we couldn't block them effectively, we had to get up there," explained Rosemont's player-coach Mary T. Kitas.

In that first game the team had spikes us. However, the spikes and dunks were in reaction to the defense. Many times Allison Bigatel or Denise Christopher,

Jackie Syphard or Maurine Greiner would wait that extra second to allow the defense to anticipate what they were going to do. Maybe in their minds they figured soft dink. Rosemont reads soft dink and prepares for it. A hard hit would be in order. A spike from Syphard and Bigatel made the score 14-11. Drexel. Mary Peavy served and Rosemont was unable to return it.

For the second game, Drexel's spiking became more of a dominating factor. Syphard slammed the ball down the center of the court that impacted upon a Rosemont player. Mary Pernaselli spiked the ball with such precision and surftness, it stunned the entire Rosemont team. Greiner and Kim Engler tossed in dinks to help the cause, but after the 4-4 tie, no matter what Drexel did, Rosemont had the lead until it was tied again at 8-8. Syphard made this possible by providing two spikes consecutively and blocking a shot over the net. Dee Murray returned the ball off the ceiling on sheer reaction to actually get the 0-8 tie. However, Drexel was creating a pattern of playing from behind as they were down 11-8, until Pernaselli fired in three consecutive good serves and Syphard provided the spike to tie it at 12-12. After that, it was all Rosemont as Drexel had violations, missed return shots, and had some close calls go against them.

"Our strategy was to hit down the line. However, we were aiming for

the middle. We started to hit down the line too late," explained Allison Bigatel of Drexel.

Rosemont realized that Drexel had the firepower to blow them into a garden in the middle-east. So Rosemont capitalized on almost every mistake Drexel made. In the fourth game, Drexel had a commanding 10-5 lead on solid team play, with Christopher leading the way. Everytime Rosemont tried to put a streak of scoring together, Christopher would spike their attempt. Bigatel was responsible also for halting some of Rosemont's drives. Then suddenly it was 12-10 Drexel, Rosemont tied it up with some power serving and Drexel never saw the ball again until after the match was over.

In the fifth game; Drexel started off with a 2-0 lead, with the game series tied at 2-2. Pernaselli gave Drexel this lead on good serving. Then suddenly, Candy Dann and Gina Brenner of Rosemont started spiking of their own. The score boomed from 10-6 to 13-8 in a matter of minutes, favoring Rosemont. Christopher and Bigatel were able to stop Rosemont at times, but Rosemont kept the fire going under the pressure cooker. A lot of calls in this game were missed. Especially on the baseline when the ball went out. There was one time when the lone referee missed the play on the court as she had focused her visual attention elsewhere. The action was

Continued on page 11

Runners on the run

The Cross Country Team was ambushed in the passes of the Belmont Hills once again last Saturday as they lost to St. Joseph's (19-40) and Delaware's (24-31) deeper teams. Two of the Drexel runners, Don Kern, and Rich Minuti, set personal records in the meet.

Don Kern, a junior from Council Rock High School, ran the five mile course on the Belmont Plateau in 26:55, the third best time ever by a Dragon on the home course. What is more impressive is the fact that Kern had only run the course twice all year-once two weeks ago and last Saturday.

Since Kern has been on co-op, he has been unable to practice on the Belmont course. As a result the hills

affected him greatly, and Coach Siderio expects Kern to break the six year old Drexel record of 26:44 set by Rich DiSebastian once Kern has had more practice on the hills.

Training problems of the same kind held back Rich Minuti. Minuti set a personal record of 27:25, the seventh fastest Drexel time for the demanding Fairmont Park course. Minuti is also on co-op, and had not run the course in over a year.

Coming up for the Dragons are the ICAAAA Championships on Friday, Oct. 27 at Van Cortland Park in New York and the East Coast Conference Championships at Belmont on Saturday, Nov. 4.