

# Triangle

VOLUME LIII, NUMBER 7

DREXEL UNIVERSITY, PHILADELPHIA, PA.

FRIDAY, NOVEMBER 7, 1975

**1:30 1:00 Issue:**

## Congress Calls For Student Meeting

### Lunch Break Must Stay

#### Assembly

#### Is Set For

#### Tues. and Wed.

#### In Quad and

#### Sunken Court



By Anita Brandolini

Student Congress designated Tuesday and Wednesday of next week as days where students will be given the opportunity to express their opinion on the Administration's plans to abolish the 1:00-1:30 PM break.

Sixteen members of Congress will assemble either in the Sunken Court or Quad during the break to speak with and listen to students. Later that evening, Buzz Bennett, Student Body President, will call an emergency meeting of Congress to decide on how they will fight the abolishment.

Last Tuesday, Student Congress met at their regular meeting in which most members expressed their opposition to the move. In a heated discussion, the members drew up alternative plans of action. Up for debate was a proposal to call for a student strike. Some members felt it would not be in the best interest of everyone involved if they were to take such drastic action, others called for a show of solidarity. Forty minutes later, the consensus was to set up the meetings for next week.

Last week, the Triangle came out with an editorial against the elimination of the break citing it would "ignore the needs of the majority of the students." The Triangle felt "with the implementation of this proposed plan, the term 'educational factory' would be more literal than figurative."

Many students feel that this break is an important part of the day and should be kept because it affords students a time when they can be certain of reaching the faculty and administration.

A few weeks ago, the administration proposed eliminating the daily half-hour break beginning in Fall

'76 in the interests of economy and convenience. This move would allow scheduling of eight class hours a day instead of the present seven, and would result in more efficient use of space and time.

#### Cafeteria Food Quality

Responding to several complaints from students who have become ill from the food, Congress has set up a standing Committee to investigate the quality of the food and the conditions in the cafeteria. The committee will hold several meetings during the day over the next few weeks where students will be invited to register specific complaints about the food service. Another function of the committee will be to look into the overcrowding conditions.

In other business, the Winter Weekend Committee reported that they have been working on plans for the weekend. No specific group has been booked for the concert yet, but representatives from the Main Point have come to look at the facilities here. The committee hopes to be able to use the gym for the concert, if a protective floor covering can be purchased.

#### First Lady Invited

Two of the Student College Deans revealed some plan for their respective College Days. The Student Dean of Nesbitt College said that they have invited Mrs. Betty Ford to speak, and the Student Dean of Engineering reported that the Federation of Engineering and Science Societies chose Kurt Vonnegut as their keynote speaker. Both choices are still tentative, however.

Legislation passed at the meeting included the bill which established the cafeteria committee. Also passed were a bill concerning the possibility of permanently setting aside commuter rooms, and a bill which provided for closer examination of organizations with a budget of over \$1000.

## Top Resignations In WKDU; SAC Demands Fiscal Controls

By Dennis Myers

On October 31, Rich Hamilton resigned as General Manager of WKDU and Bob Denny replaced him. Rich said his reasons for stepping down were "I am a senior and have been involved with the station for four years. I tried to do my kind of management and now it is time for Bob Denny to bring in his ideas of management. It has nothing to do with the SAC affair". He was not the only key member of the WKDU staff to resign. Vince Coles, the Comptroller and J.B. Moore Promotion manager also left their positions.

WKDU's problem with the Student Allocations Committee started last spring when their \$48,000 budget was considered too high. A trimmed budget for \$17,000 was resubmitted during the summer but that also was denied. S.A.C. informed WKDU they did not exercise enough fiscal control since they had an overexpenditure for fiscal 1974.

The management of WKDU was called upon to answer this complaint this summer. At this time Rich Hamilton was in Saudi Arabia on co-op, Vince Coles was getting married as well as Bob Denny, then assistant general manager. According to Denny, "Those were the people to talk to. S.A.C. asked J.B. Moore and Vince Coles to answer questions on the overspending. J.B. Moore was only acting General Manager, for the summer. "His function was to keep the station running on a day to day basis," said Denny. Then he explained how the overexpenditure resulted. "The Drexel Comptroller withdrew money for charges placed on the station account that the WKDU management did not authorize and during the summer a couple of bills were paid twice. "The sum of the amount withdrawn and overpayment of the bills equal the

overexpenditures," stated the new G.M. "The overpayment of the bill has been recovered but the charge still stands as is with no effort to resolve the matter by the Comptroller's office".

On Oct. 1 of this year, S.A.C. stopped all funds going to WKDU.



WKDU Member interviewing on the Street

"This caused severe stagnation in the station. We couldn't pay our bills for the past month," asserted Denny. WKDU wants to start a noon time news program covering Drexel events. "This was our first priority. It would take 35 days to get this service started, what we had scheduled for November 1st is already pushed back to mid

December", he said. "Our Freshmen are getting disinterested and going to other organizations. WKDU is now operating on a contingency plan that will provide money for emergency situations.

An S.A.C. subcommittee chaired by Dr. John High want to budget the station on a quarterly basis. This method was unacceptable to WKDU because the operational needs fluctuate from month to month. They can not foresee equipment breakdowns in advance. Denny proposed that S.A.C. determine the amount they would give to the radio station for the year and give it in full. Then the station would present a cost analysis to the committee on a monthly basis. If the operations were to their disliking S.A.C. could tell the station to correct the problem or cut off funds again.

Also the committee wants to know why the station was not aired in the Creeses Student Center. Denny stated "That's not in WKDU's control, the Colonel (Conway) doesn't like the music we play so doesn't listen but if a program of interest to Drexel community (new news program) maybe people would want to listen."

"S.A.C. held a meeting this Wednesday. At this meeting WKDU was given \$8,000 for the fiscal year 1975.



Rich Hamilton, Former WKDU General Manager interviews Student.



Prof. John Savchak ran in the only contested race for Faculty Council. Dr. Carl Silver lost to Savchak 25-21 in Bus Ad. College

## All Run Unopposed In Faculty Council Election Except For Savchak

By Olena Stercho

Faculty Council elections were held last week for the seven open seats on the 14-member council. According to John Savchak, Chairman of the Council, the only contest in this year's election occurred in the College of Business and Administration. In that race, Savchak defeated Carl Silver, Professor of Statistics, 25-21. The new members of the group, who all ran unopposed, include:

College of Engineering: Frank N. DiMeo, Assoc. Professor of Electrical Engineering

College of Humanities and Social Sciences: Frank C. Huntingdon, Assoc. Professor of History

Graduate School of Library Science: Thomas Childers, Assoc. Professor of Library Science

Nesbitt College: Sylvia S. Clark, Assoc. Professor of Design

College of Science: Herman B. Wagner, Professor of Chemistry

Unattached Groups: Edwin Stewart, Industrial Coordinator

Savchak said that the absence of contests for the seats was not a

reflection of what might superficially appear to be faculty apathy. He attributed it to several other factors. First of all, Faculty Council meets once a week, and some faculty cannot spare the time from their already busy schedules. Others are reluctant to oppose a colleague for a seat for fear of a popularity contest, which might result in unpleasant working relations.

The Faculty Council is the representative body of university faculty and acts on their behalf in advising the President of their position on various academic and university matters. Each college is represented by two members, who are elected to two-year terms. The council not only debates various issues, but conducts studies, receives petitions and investigates matters of interest. Furthermore, the body often makes recommendations to the President and passes resolutions which are later instituted as academic policy. The council meets once a week. Meetings are not open to students.

# ANNOUNCEMENTS

## Trip to U.S. Supreme Court

The Department of History and Politics is sponsoring a trip to the U. S. Supreme Court, Washington, D.C., on Wednesday, Nov. 12, 1975. The trip will include:

1. Argument at the morning (9:45 A.M.) and afternoon (1:00 P.M.) sessions of the court.
2. Lunch in the Supreme Court Cafeteria.
3. Afternoon conference with Associate Justice Harry A. Blackmun.

Cost: Transportation via Metroliner from 30th Street and meals. A briefing will be held on Monday, Nov. 10, 1975, from 12:00 - 1:15 P.M. in EAC room 5051B.

Group will be limited to 25 persons on a first-come, first-serve basis. Please reserve your place with the form below and leave it in the Department of History and Politics, EAC room 5010.

Please reserve \_\_\_\_\_ place(s) for Supreme Court trip.  
Name: \_\_\_\_\_  
Address: \_\_\_\_\_  
Phone: \_\_\_\_\_

## Gays at Drexel

The next meeting of Gays at Drexel will be on Tuesday at 6 PM in the EAC. All women and men are cordially invited. Check the bulletin board at the Creese Student Center Entrance for the room number.

## D.U. Library

The Drexel University Library offers computer-assisted literature searches in various fields of the sciences and social sciences. Several bibliographic data bases are now accessible for "on-line" retrieval of citations to journal article and other documents.

User costs are detailed in a price list in a brochure available in the library. To initiate a search, contact: in Social Science Field, Michael Halperin, 895-2754; in Science & Technology Field, Linda Kosmin, 895-2766. They will discuss your topic with you to determine if the service will be useful to you.

## Budget Seminar

You are invited to a free exchange of views and to free drinks after as well at the "Wide-Open Meeting with Council Members of the Budget Seminar." Discussion will be on the topic of "Budget Priorities." Such questions as what is the Drexel budget income, budget expense, deficit, and what steps are being taken to cut the deficit will be addressed. Almost all the members of the Council on the Budget Seminar will be present. It will be held on Wednesday, Nov. 12 from 3:30 to 5 p.m. in Patten Auditorium in Matheson Hall. There will be an Open bar, courtesy of Drexel A.A.U.P. to all attending at 5 p.m. P.S. - Students are welcome!

## Coat Hangers

The Creese Student Center needs coat hangers. If you have any extras, please bring them to the main desk, CSC.

## Musical Picnic

All music organization members are invited to come to the Music Picnic on Sunday, November 9th at 12 PM. It will be in Fairmount Park at the intersection of Belmont Avenue and Chamounix Drive. Bring your own drinks and hot dogs. The rest will be provided.

## Campus Calender

Groups or organizations may have their daily notices listed in the Campus Calender by leaving them at one of the student sponsors or at the Book Store, the Residential Living Officer, or at the main desk, CSC. Notices should be no more than one line per day, 38 characters per line. Deadline for copy is Nov. 14.

## Chinese Students

The Chinese Students Association of Drexel will have its pictures taken for the yearbook on Tuesday November 11, 1975 at 3:30 PM in front of the library. The CSA is also having a Thanksgiving Dinner on Sunday November 23. Time and location will be announced at a later date. For inquiries please contact Bill Chary BA 2-9578 (Rm. 319) or Li Huany BA 2-9584 (Rm. 501)

## D.C.F.

Tonight, we will be examining an important teaching of the Bible, Repentance and Forgiveness. If you suffer from the guilt of past actions, tonight's topic will be very helpful for you. There will be fellowship and refreshments after the meeting. Meet at 7:30 PM in Kelly Hall, North Lounge.

## Afro-Americans

There will be a meeting of the Drexel University Afro-American Society on Thursday, Nov. 20 at 3:30 PM sharp in room 3022 EAC. All students are welcome.

## Colonial Ensemble

The colonial Ensemble will perform Monday night, November 10th, at 8 PM in Calhoun Hall's West Lounge. If you've never heard a live classical performance, this is a great chance. The costumes are something else, and seasonal refreshments will be served.

## Fashion Tips

Two of the worlds foremost authorities on fashionable fabrics and their care will keynote a consumer, student and professional garment buyer fabric care seminar at Drexel University's Nesbitt College, 33rd & Market sts., on Friday, Nov. 14 at 9:45 AM. Dr. Dorothy Siegert Lyle and Norman Oehlke, International Fabricare Institute's director of consumer relations and chief laboratory analyst will focus attention on suggestions for consumers which will help save money and prolong the life of present wardrobes and household fabrics.

Those who are interested in attending may call (215) 227-1155 or write: Guild of Professional Drycleaners, 2225 Glenwood Ave., Phila., Pa. 19132 for reservations.

## FNF

This week's Friday Night Flick will be "S\*P\*Y\*S". Donald Sutherland and Elliot Gould do to the CIA what they did to the Army in "M\*A\*S\*H". Show times are 4, 7, and 9:30 p.m. in Stein Auditorium. Admission is 75¢.

## Squash Club

All Dragon Squash Club members: please send in your free-time schedules today!!

Anyone else interested in joining the club to meet new competition or just to learn the game, call Kevin Haskins at 659-7742.

## Fall Weekend

Fall Weekend is almost here! This year, the weekend will be kicked off by a special showing of the flick "Save The Tiger" starring Jack Lemmon in his academy award-winning performance. It will be shown Thursday, Nov. 13 at 8 p.m. in Stein Auditorium. Then, on Friday, Nov. 14, there will be a party in the Grand Hall CSC featuring the rock band "Rain" and liquid refreshments. It starts at 9 p.m. and goes to 1 a.m.

And on Saturday, to wrap up the weekend, there will be a concert in the Grand Hall featuring the sounds of the "Buffalo Chip Kickers," who will be appearing at the Main Point. There will also be liquid refreshments. A ticket for the entire weekend will be \$3, and tickets for the individual events may be purchased at the rate of 75¢ for the flick, and \$1.50 for each, the concert and the party.

## Textiles

This week's film will be "Textiles in the Making." Brown bag your lunch and join us in the H.B. & D. lobby (2nd floor of Nesbitt) from 1:30 on Thursday, Nov. 14. Free samples and/or pamphlets will be distributed. We're looking forward to seeing you there.

## Mini-course

The Residence Hall Free University is a series of mini-courses to be offered in the dorms this Winter Term. Right now, we are looking for "TEACHERS."

If you have a hobby, skill, or talent you can share with others, you have all that is needed for a Free University Mini-Course.

To sign up to teach, pick up a form at your dorm's main desk, or call Charlotte Spector at ext. 2880.

## MORE ANNOUNCEMENTS Page 4

# Triangle

VOLUME LIII, NO. 7 Established 1926 November 7, 1975

EDITOR-IN-CHIEF: Steve Berhang  
MANAGING EDITOR: Bill McDermott  
BUSINESS MANAGER: Rick Serafin

News Staff: Olena Stercho, Editor; Anita Brandolini, John Gamrat, Tom Garguilo, Mary Mancini, John Mastel, Dennis Myers, Bill O'Brien, Karl Schaeffer, Marc Weissman, Jack Ringlestein

Features Staff: Steve McMahon, Editor; Alan Brody, Buzz Cerino, Lloyd Dickerson, Robin Fraser, Bob Hickey, Ray Penkola, Dan Riganati, Sal Roditi, Fred Trietsch, Maureen Waters, Bill Wood, John Grovsky, Wayne Gardner, Chas Cohen, Harriet Cohen, Fred Baker

Sports Staff: Kevin Cunnion, Editor; Willie Connor, Kevin Haskins, Lorraine Lombardo, Mitch Plotnick, Ginny Worthington

Photography Staff: Joe Skirim, Editor; Paul Davit, Jim Degeus, Dave Husman, Neil Jasper, Leonard Leschinsky, Michael Trosino, Joe Wdzieczkowski

Production Staff: Shirley Singer, Editor; Felice Franklin, Lola Greenburg, Jeanne O'Connell, Lynda Schaefer, Neil Schmerling, Yuriy Stercho, Pat McDowell, Copy Editor

Advertising: Marla Euzent, Advertising Manager; Greg; Bob Walsh; Sandy Ruth; Victoria Pyle; Paula Weinberger; Cathy McClelland; Cynthia Casanova

Campus Editor: Denise Zaccagino

Financial Advisor: John Davis



Official newspaper published Fridays during the four school terms by the students of Drexel University, 32nd and Chestnut Streets, Philadelphia, Pa. 19104, phone BA 2-0800 or 895-2585. Opinions expressed are not necessarily those of the University or of the Triangle. Advertising rates furnished upon request. Address all business communications to the Business Manager. All other correspondence, address to the Editor.

Copyright, 1975 The Drexel Triangle.  
REPRESENTED FOR NATIONAL ADVERTISING BY  
National Educational Advertising Services, Inc.

360 Lexington Ave., New York, N.Y. 10017

## FIFTH ANNUAL



sponsored by

The Sisterhood of Reform Congregation Keneseth Israel

Monday, November 17, 1975 - 11 A.M. to 10 P.M.  
Tuesday, November 18, 1975 - 11 A.M. to 9 P.M.

at KENESETH ISRAEL

Old York Road and Township Line, Elkins Park, Pa.

55 Distinguished Antique and Craft Exhibitors from 8 States

SPECIAL EXHIBIT OF BURGUES PORCELAINS OF LIMITED EDITION

DAILY ADMISSION \$2.00

LUNCH AND SNACKS AVAILABLE

Champagne Preview - Sunday, November 16, 1975  
7:30 P.M. to 10 P.M.

\$5.00 (includes daily admission)

## Hillel Happenings



TODAY & TOMORROW  
Weekend Kallah

Only \$10

RSVP: X2531 or at Hillel, CSC 224

MONDAY "Good-bye Columbus"  
with Ali McGraw & Richard Benjamin  
Kelly Hall Lounge, 7:30 p.m.

SATURDAY  
HILLEL HAYRIDE  
8:15 CSC Lobby  
"Always loads of Fun"



Joseph F. Ford

## Committee Formed To Study Co-op Program For 4 Year Students

by Olena Stercho

A committee has been formed in the College of Business and Administration to study the future of the college's controversial four-year co-op program for women. The program came under fire recently when a male student attempted to gain admission to it and was denied by the co-op department. The program, which was specifically designed for women, currently illegally discriminates against men.

According to Dr. Joseph Ford, professor of Accounting and chairman of the committee, studying the program, three avenues of approach can be taken toward resolving the problem. The name of the program could be changed so that it would be open to men, with the requirement that participating students attend school the summer after freshman year. Ford explained that this way, students could then go out for two six-month co-op periods, in the place of the one six-month and one three-month industry assignment that is currently offered. He believes that this would both alleviate the problem the co-op department frequently has with placing students for the three month period, and remove the objections the department presently holds to admitting men to the program. The department contends that if too many students enroll in the program as it stands now, it will be very difficult to find jobs for them that mesh with standard co-op cycles.

Ford pointed out two disadvantages to the proposed revision of the program. The four year and five year co-op programs would be in competition with one another, and he was not certain what effect the latter might have on the former. Ford commented that students can get considerable more experience during 3 1/2 industry periods as opposed to two. He added that freshmen would also be deprived of their summer vacation, which is often crucial to students after the first year of college.

The second alternative is admitting men to the program in its present form. "It would be OK from the standpoint of legality," Ford said "but I don't think anything would be solved. The three month co-op period is the stumbling block for the continuation of the program in whatever form."

Finally, the four-year co-op program for women would be eliminated entirely. Ford noted that this would be the easiest method of getting out of the present dilemma, particularly because only 104 students are enrolled in the program at this date. He added that the approach would both make the co-op department happy and be equitable to both sexes. However, a need for the four-year co-op program, in some form, seems to exist.

# New Dorm Top Priority In Drexel Expansion Plans

by Olena Stercho

The top priority in Drexel's long-range expansion plans is a new dormitory, according to Jerry McFarland, Director of Planning and Construction. However, despite a demonstrated pressing need for dorm space within coming years, construction of a new residence hall could be completed in four or five years at best.

As of yet, Drexel has not been able to obtain a site for the new dormitory. "As soon as we get a site, we'll be ready to go," McFarland said. Presently, the land acquisition process is tied up in a lawsuit brought by the East Powelton Concerned Residents (EPCR) against the U.S. Department of Housing and Urban Development (HUD) and the Philadelphia Redevelopment Authority (RDA) in which Drexel petitioned to become a defendant. The dispute involves a parcel of land, extending from 33rd to 34th sts., from Chestnut to Powelton Ave. The new dormitory would be located somewhere in this area. The EPCR contends that federal law and regulations were violated because there was a lack of citizen participation in community planning when the original plans were finalized.

However, Drexel had made an agreement with the Civic Homeowners Association, a long-established group in the Powelton area, when plans were laid in 1970 to purchase the land from the RDA. "We believe that we have a valid contract with the RDA," McFarland commented. "The land in question has been tested in court and had more hearings than has any other RDA property I can think of. We have a very legal document and are prepared to fulfill our end of the bargain."

McFarland conceded that Drexel has not been able to reach an accord with EPCR. "There is nothing we could do to earn their support," he charged, "It appears that they simply don't want Drexel to lay another brick." He noted that the Civic Homeowners Associations does not view university expansion as a necessarily evil thing. "They believe that if it is necessary for Drexel to expand, it is preferable

that the boundary lines of this growth be defined." He added that they also recognize that the Drexel campus is a permanent, attractive addition to the Powelton area as opposed to an undesirable commercial establishment.

EPCR, a strong proponent of low income housing has suggested in the past, that Drexel rehabilitate some of the Victorian homes in the area and house students in them. McFarland noted that this is a highly impractical proposal, since a maximum of 150 students could be accommodated in these units, while the three additional dormitories Drexel ultimately hopes to construct would house 1200 residents.

McFarland could not pinpoint a date by which the university might expect to have land available for

the dormitory. In the meantime, the delay is costing Drexel money. The university has a \$2.8 million subsidy loan at its disposal from HUD, but



Jerry McFarland

skyrocketing construction costs are eating away at the actual buying  
continued on page 8

## 'Prove To Administration We Want Student Pub'

by Anita Brandolini

Student Congress feels that the chances of a Student Pub being established are "good," according to Nancy Ash, Vice-President for Student Affairs, "if we can show student support." She added, "We have to show the administration that the student wants it, that it will be profitable."

In an effort to gain this student support, Ash had given a petition to members of Congress to circulate among students. To date, very few have been returned, and at Tuesday night's meeting, she could not even determine who still had the petition.

Colonel Lewis Conway, Director of the Creese Student Center, was not so optimistic. He said, "Most decisions are influenced by the interest shown. We have to get a reading on the students' feeling. If there's a lot of pressure, it could be set up, but I don't think anyone's really spoken to the key administrators yet."

Conway noted that there are "problems of policy changes and money," although "the renovation

of the Dragon's Den could include beer on tap." He said that proposing that the Pub be put in the Creese Center was a good idea, since the Board of Trustees has banned the sale of alcoholic beverages in all university buildings, except the Creese Center and Drexel Lodge. "The administration will still have to take a long hard look at the proposal before making any final decisions, though," according to Conway.

Another difficulty was mentioned by Nancy Ash. She said, "The administration argues that not enough students are old enough to drink, but we say that if the sophomores support it now, they will use it when they come of age."

In order to minimize this problem, Ash said that there would be some way of checking students' ages at the door. Conway also commented, "I will co-operate to the extent that I will be the manager as far as state licensing goes. If we have anything to do with it, we will have controls."

## Funds Solicited For Drexel

by Karl Schaeffer

The Rush building, located at 33rd and Lancaster is one of the more nondescript buildings on the Drexel campus. Built with a style much like that of the Main Building, it tends to blend into the surrounding neighborhood, instead of shouting its appearance in orange brick. Within this building dwells the Office of Corporate Relations. This office is part of the Office of University Relations and is responsible for Drexel's dealings with various companies and foundation. In 1974, the office was responsible for approximately \$800,000 in various funds made available to Drexel.

The office is headed up by Michale Mancuso Jr. He is assisted by Bill Nessler. Mancuso came to Drexel in 1965 as a co-op advisor to Commerce & Engineering and Business Administration students. He moved over to the newly formed

Corporate Relations office in 1967 after being involved in the "three quarter century" fund-raising program. Nessler is a new addition to the office, having moved over from Grad Placement in September of this year.

According to Mancuso, the main purpose of this office is to provide liason between Drexel and private industry and seek corporate funds for Drexel's use. The office acts as a central coordinating agent for all of Drexel's quest for industrial funds. The officer provides ad-

ministrative and legal help to the various departments within Drexel seeking funds.

The office's major job is to keep Drexel's mane in front of the business world. This is done by daily release, personal contact and the Drexelletter. The Drexelletter is a monthly newsletter with a distribution of 3,000. The Drexelletter has articles about Drexel that are of interest to the business community. A recent Drexelletter had articles about Dr.

continued on page 9

**50¢ THE UNIVERSITY STORE 50¢**

**Good for 50¢ off HOODED SWEATSHIRTS**

in clothing department



Offer expires  
**Nov. 14, 1975**

**50¢**

### CONTACT LENS Specialist

Our Prices are Amazingly Low

**Dr. Leon Blumfield**

707 Chestnut St., Phila.  
(in Rogers Vision Center)  
215 WA 3-0430

## DREXEL SHAFT SCREWS AGAIN



LET'S UNITE TO KEEP OUR BREAK

Tuesday & Wednesday

1:00

at Quad & Sunken Court

(Main Court in case of rain)

IF YOU DON'T USE IT, YOU LOSE IT

# More Announcements

## Hillel

There are still spaces for Hillel's Weekend Kallah today and tomorrow. It's only \$10 for food, lodging and transportation. Call ext. 2531.

"Good-bye Columbus" will be shown on Monday night at 7:30 p.m. in the Kelly Hall lounge.

Saturday is the Hillel Hayride. It's always loads of fun. Refreshments included. Meet in the CSC lobby at 8:15 p.m.

## Debate Society

There will be a meeting of the Debate Society on Wednesday, Nov. 12 in room 3034/35 EAC at 3:30 p.m. All are welcome.

## Sigma Society

Drexel's Sigma Society invites all Drexel women to a Tea & Coffee Social on Friday, Nov. 7 in the Second Floor Lounge of the CSC. The Sigma Society is the largest women's service organization on Drexel's campus. It is composed of unique, interesting, and interested young women with leadership qualities who enjoy being of service to their university and community, as well as mankind. Please consider this your invitation to join us this Friday for awhile between 12:00 and 2:30 p.m. Bring a friend. We will be more than happy to answer any question you might have. Looking forward to meeting you.

## Seniors

The week of November 17-21, balloting for commencement speaker will be set up at various locations around campus. Polling time will be 12 p.m. to 1:30 p.m. Monday through Friday. Make your voice known then, not your regrets later.

## Women's Council

On Thursday, Nov. 13, Drexel Women's Council will hold the second in its series of programs. Dr. Arthur Shostak will speak in Van Ren's Living Room at 8 p.m. His talk is entitled "Women, Men, Work: New Problems and Possibilities." All women and men are invited.

Announcements should be submitted to the TRIANGLE on the proper forms, which can be found outside the office, room 3014 EAC. They should be dropped off either in the bin designated "announcements" sitting on the Campus Editor's desk, or in the slotted drawer located outside the office. No announcements that are submitted after 3 p.m. of the Wednesday before the publication date will be accepted. All announcements must be printed or typed, and legible. The TRIANGLE will not be responsible for announcements which are submitted incorrectly or which are submitted late.

## Chipkickers come to Drexel

In line with the Student Program Board's continuing series of on-campus concerts, an exceptional four-man outfit, called Bob Doyle & the Buffalo Chipkickers, come to Drexel's Mandell Theatre on Friday, Nov. 14 at 8 p.m. The Chipkickers' refreshing musical style is rooted deep in the traditional American music vein, taking the best from bluegrass, old time, country & western, and folk.

Since the winter of 1972, they have been playing throughout the northeast, primarily at colleges and universities in Pennsylvania, with a few choice appearances at the Exit Inn in Nashville, Tennessee, and at the nearby Main Point in Bryn Mawr. Group personnel include: Bob Doyle-vocals, six and twelve string guitar, five-string banjo, mountain dulcimer, English pennywhistle, and fiddle; Joe Dietrich-vocals, six-string guitar, and five-string banjo; Matthew Guntharp-vocals, fiddle, mandolin, and six-string banjo; Matthswnd hugh Johnson-vocals, bass fiddle, and guitar. Two members of the band have received grants from both the Pennsylvania Council of the Arts and the Penn State Foundation for the "collection, analysis, and publication of folk music in central Pennsylvania," enabling the group to offer a program in traditional music. Each member operates in close teamwork to produce a unique sound they call "Chipkickin' Music." Check it out for yourself next Friday with an enjoyable evening of good time music--you won't be disappointed.

# SCOPE

Friday-Nov. 7

- 12-12:30 PM Sigma Society (Women's Tea & Coffee Social-2nd floor lounge CSC)
- 4, 7, 9:30 PM SPB Movie (S\*P\*Y\*S) Stein Auditorium
- 9 PM Pi Lambda Phi (Double Cheeseburgers)
- 9PM Sigma Alpha Mu (Thumper Nite)

Saturday - Nov. 8

- 8 PM Society of Am. Military Eng. (Mack Truck Plant Tour-meet at Drexel)
- 9 PM Sigma Alpha Mu (Homecoming)
- 9 PM Phi Sigma Kappa (Homecoming)
- 9 PM Tau Epsilon Phi (Homecoming)
- 9 PM Delta Sigma Phi (Homecoming)
- 9 PM Pi Lambda Phi (Homecoming)
- Soccer: West Chester at Drexel 1:00 PM
- Cross Country: ECC Championship

Sunday - Nov. 9

- 11 AM Commuter Coalition Road Rally (Drexel Field-43rd & Powelton)
- 7 PM WINTER WEEKEND MEETING - Van Ren 9th floor, Edie
- Hillel Deli Dinner - Van Ren at 5:30 PM

Monday- Nov. 10

- 7:30 PM Calhoun Hall House Council Meeting West Lounge
- 8 PM Dept. of Music-Drexel Colonial Ensemble (Calhoun Hall Lounge)
- 9 PM Pi Kappa Phi (Monday Nite Football)
- 9 PM Pi Lambda Phi (Monday Nite Football)
- 9 PM Phi Sigma (Joe's Bar and Grill)
- 9 PM Sigma Alpha Mu (Monday Nite Football)
- 9 PM Tau Epsilon Phi (Monday Nite Football)

Tuesday-Nov. 11

- 3:30 PM Chess Club Meeting (Room 101N-CSC)
- ? Delta Sigma Phi (Cocktail Hour)
- 9 PM Lambda Chi Alpha (Danny and Friends)

Wednesday-Nov. 12

- 1 PM Dept. of Music-Music for Lunch Bunch by the Madrigal Singers (Living Arts Lounge)
- 7 PM Community Council Meeting (Kelly Hall-North Lounge)
- 9 PM Pi Lambda Phi (Wallbanger & Sunrises)
- 9 PM Alpha Pi Lambda (Wednesday Niter)
- 9 PM Pi Kappa Phi (Harvey Wallbanger)
- 9 PM Apple Pi Mixer
- 9 PM Pi Kappa Phi (Speakeasy)

Thursday - Nov. 13

- 7:30 PM Van Ren House Council (Staff Lounge)
- 7:30 PM Kelly Hall House Council (North Lounge)
- 8 PM Topic: Women's Men Work: New Problems and Possibilities (Van Ren for Women[s International])
- 9 PM Sigm Pi Hoosegow

Friday- Nov. 14

- 8 PM Dept. of Music-Wm. Penn Opera by Romeo Cascarino Orchestra Society of Philadelphia Soloists-Drexel Glee Clubs (Main Auditorium)



## HUGE RECORD SALE

SALE STARTS TODAY

AT

## the UNIVERSITY STORE

### ROCK

The Who  
Nilsson  
Buddy Miles  
John Sebastian  
Three Dog Night  
Jefferson Airplane

### JAZZ

David Brubeck  
Ramsey Lewis  
Cannonball Adderly  
Ella Fitzgerald  
Stan Kenton  
Dizzy Gillespie  
Gerry Mulligan  
Alice Coltrane

### CLASSICAL

Pittsburgh Symphony Orchestra  
London Symphony Orchestra  
Colin Davis  
Andres Segovia  
Carlos Montoya  
Julian Bream  
Josef Krips  
Pablo Casals

### BLUES-FOLK

Buffy Sainte Marie  
Joan Baez  
Woody Guthrie  
Muddy Waters  
Lightnin' Hopkins  
John Lee Hooker  
Leadbelly  
Billie Holiday

### LABELS

RCA  
Atlantic  
Elektra  
ABC  
Philips  
Sire  
Que  
Non  
Nonesuch  
Vanguard  
and many more

### TCHAIKOVSKY:

LAST THREE SYMPHONIES.  
more  
Abravanel  
Utah Symphony  
Value to \$23.98 4 record set

### BEETHOVEN:

SYMPHONY NO. 9 AND NO. 8  
Soloists  
New Performance conducted by Jean Fournet and Rotterdam Philharmonic Orchestra  
Value to \$11.98 2 record set

### THE ESSENTIAL MAHLER

Symphony No. 1 and No. 5, more  
Value to \$23.98 4 record set

### BEETHOVEN:

COMPLETE NINE SYMPHONIES  
Josef Krips  
London  
Symphony  
Value to \$41.50 7 record set

### THE BAROQUE TRUMPET AND HORN AT THEIR FINEST

Maurice Andre, Adolf Scherbaum  
Value to \$29.98 5 record set

### THE CLASSICAL GUITAR

Andres Segovia  
Laurindo Almeida,  
John Williams,  
Carlos Montoya,  
and many others  
Value to \$29.98 5 record set

## WANTED BLOOD & PLASMA DONORS

EARN '60 PER MO  
ON OUR  
PLASMA PROGRAM  
CALL 228 - 2343  
FREE INFORMATION  
INTERSTATE  
BLOOD BANK INC.  
2503 N. Broad St.

### CONFIDENTIAL SERVICE

## Women's MEDICAL CENTER



Outpatient Abortion Facility  
Free Pregnancy Testing  
Menstrual Regulation  
Birth Control Counseling

(215) 265-1880

# Health Center Services

Drexel health services provided to the Drexel students are generally free of charge. A few exceptions exist, however, and they are very specific. The exceptions include: certain immunization injections; drugs which are prescribed for more than one course of treatment or which are extremely expensive and; preliminary gynecological examinations for contraceptives. All other out patient and inpatient services are provided without charge.



Services provided by the Health Center are fairly broad in their scope. Out-patient physicians care is available on a daily basis from 9 AM to 5 PM. Between 5 PM and 8 PM Nursing coverage is available as is true throughout the week end. During this same time period there is a physician on call, this according to Dr. Clyde E. Rapp Jr., Director of Health services. Both orthopedic and general surgical services are provided for. The surgical clinic is on Mondays and Thursday from 8:30 AM to 9:30 AM. No appointments need to be made prior to coming in. Appointment, however, are necessary for the orthopedic clinics which are scheduled between 10:00 and 11:00 AM on Mondays and Wednesday from noon to 1:00 PM. Students seeking to consult with a psychiatrist can do so at his convenience. An appointment is necessary, however. No problem is considered too small and the services are entirely confidential.

Gynecological services are available to students at the Health Center four hours a week, Tuesday and Thursdays from 5:30 PM to 7:30 PM. These services are provided free of charge. Contraceptives are available on a prescription basis only. There is a slight fee for the preliminary examination and pap test. If an escort is desired when coming to or leaving the center after dark, A Burns security guard will be made available.

Should the need for an x-ray arise, a qualified technician is available daily at the Center between 9 AM and 1:00 PM. The Center is also capable of performing a wide range of laboratory studies. A registered medical technologist is available to run any necessary studies, Monday thru Friday between 8 AM and 4 PM. Infirmary care is also available. The in-

firmary will accommodate twelve patients and is designed to care for students who are ill enough to require bed rest and nursing care. It is supervised on a twenty-four hour basis by registered nurses and a physician makes daily rounds and is available when needed. Again there is no charge for these services.

According to Dr. Rapp, use of the Health Center services has been increasingly utilized by the students. The commuter student, however, is the exception. For some reason, commuters tend to under utilize the Health facilities, possibly because of continued preference for their own personal physician.

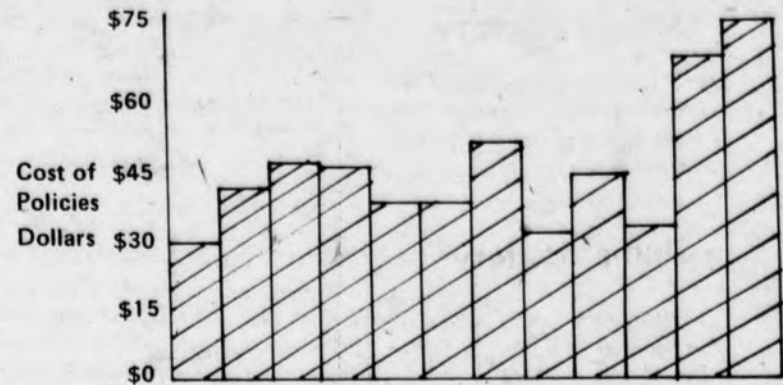
The Drexel insurance plan, for which the student is billed along with his tuition and fees at the beginning of the academic year, is a good plan from the view point of Rapp. "I think its a good program, possibly better than other schools." That is, considering the cost and adequacy of coverage. Rapp considers it comparable with Blue Cross-Blue Shield accident coverage and slightly below Blue Cross when it involves Hospitalization.

According to Rapp there are presently no plans to expand future services provided by the center. At present there are no facilities for the services of a Dentist. The economics don't justify the services of a dentist, in Rapp's view. The cost to install the required equipment and the cost of the services of a dentist would be too costly and eventually be paid for by the student. An ophthalmologist services are also not provided. Rapp sees no crying need for services not already provided.

A primary role of the center, as seen by Dr. Rapp, is education. He considers the informational education provided by colleges often behind high schools. An increased emphasis on Health education is desired by Rapp. He considers it most beneficial to the student if the student were to learn about health before he gets sick.

Students should be informed that all records kept by the Health Centers are completely confidential. They can be viewed only by professional personnel involved with the student. For students not informed, the Health Center is located on 33rd Street slightly below Powelton Avenue. The facility is open daily from 9 AM to 5 PM. Additional information can be obtained by calling 895-2540 or stopping at the center personally.

Cost of Insurance Premium to Students



Maximum Major Medical Benefits



- |                      |                        |
|----------------------|------------------------|
| A - Bucknell         | G - Penn State         |
| B - Drexel           | H - Princeton          |
| C - East Stroudsburg | I - Temple             |
| D - Lafayette        | J - U. of Delaware     |
| E - Lehigh           | K - U. of Pennsylvania |
| F - Northeastern     | L - U. of Pittsburgh   |

## Methods of Enrollment

- |  |  |
|--|--|
| Bucknell University - Optional.        | Totally voluntary.   |
| Drexel University - Optional.          | Premium included on tuition with opportunity to sign waiver card if student has other coverage.  |
| East Stroudsburg College - Optional.   | Premium included on tuition with opportunity to sign waiver card if student has other coverage.  |
| Lafayette College - Optional.          | Blue Cross - Blue Shield Premium included on tuition bill with opportunity to sign waiver card if student has other coverage.  |
| Lehigh University - Optional.          | Totally voluntary.   |
| Northeastern University - Optional     | Blue Cross - Blue Shield Premium included on tuition bill with opportunity to sign waiver card if student has other coverage (available upon registration at Bursar's Office). |
| Penn State - Optional.                 | Totally voluntary.   |
| Princeton University - Required.       | Included on tuition bill.  |
| Temple University - Optional.          | Totally voluntary.   |
| University of Delaware - Optional.     | Totally voluntary.   |
| University of Pennsylvania - Optional. | Blue Cross - Blue Shield Premium included on tuition bill with opportunity to sign waiver card if student has other coverage.  |
| University of Pittsburgh - Optional.   | Premium included on tuition bill with opportunity to sign waiver card if student has other coverage (dorm students only).  |

## \$33,500,000 Unclaimed Scholarships

Over \$33,500,000 unclaimed scholarships, grants, aids, and fellowships ranging from \$50 to \$10,000. Current list of these sources researched and compiled as of Sept. 15, 1975.

### UNCLAIMED SCHOLARSHIPS

11275 Massachusetts Ave., Los Angeles, CA 90025

I am enclosing \$9.95 plus \$1.00 for postage and handling.

PLEASE RUSH YOUR CURRENT LIST OF UNCLAIMED SCHOLARSHIPS SOURCES TO:

Name \_\_\_\_\_

Address \_\_\_\_\_

City \_\_\_\_\_ State \_\_\_\_\_ Zip \_\_\_\_\_

(California residents please add 6% sales tax.)



SPB Presents:

## SKI CANADA!

- Six days skiing at fabulous Mont. St. Anne
- Five nights in the luxurious Hotel Le Concorde
- Five breakfasts, three dinners
- Lift tickets

All for \$163<sup>00</sup>

December 26-January 2

Sign up now: Creese Student Center, Main Desk  
Reservations Limited

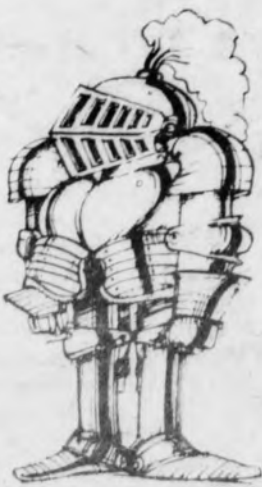
# Campus News

## Chess Club Journey

From the Chess Club

The fourth and final round of the second annual Woodpusher's Open was held last Tuesday at the CSC. Pat Walsh came out on top with 4 points and Ed Chong was second on tiebreakers with 3 points. Also scoring 3 points were Mark Maly and Raymond Ross. In the Championship game, Chong was "busted" on the opening and Wall prevailed after 11 moves.

Next week's meeting will be held in the card room of the C.S.C. There will be consultation games, skittles, speed chess, plus an appearance of two of the leading female chessplayers at Drexel, Dee and Danny. So, chessplayers, don't get rooked. Come to the meeting.



## Blood Drive Successful

Drexel students, faculty and staff members showed that they care when the Red Cross Bloodmobile paid its term visit last Monday. According to Col. Lewis Conway, Director of the Creese Student Center, 135 pints of blood were donated by members of the Drexel community. Conway noted that although Drexel fell 15 pints short of its goal, the University is far ahead of other area schools, such as Penn and Temple, in its volume of contributions.

Conway estimated that donors fell into a 5:1 student to faculty ratio. "I was very pleased to see that," he commented. "It's more representative of the population." He expressed disappointment that the fraternities did not participate as actively in this term's blood drive as usual. Attributing apparent fraternity apathy to the ongoing rush season, Conway commented that Drexel usually meets its goal when the frats turn out. He was not sure how many donors came, who were rejected.

Because of the success of recent blood drives here, all members of the Drexel community and their families are covered by the Red Cross Blood Bank. This means that if an eligible person needs blood, he or she can receive it free of charge. The Red Cross blood credit can be transferred anywhere in the world.



## Fabricare Seminar

Nesbitt College will host a seminar on fashionable fabrics and their care, which will have world famous authorities from the International Fabricare Institute as keynote speakers.

Dr. Dorothy Siegert Lyle, director of Consumer Relations for the International Fabricare Institute, and Norman Oehlke, chief laboratory analyst for the Institute, will give tips on how consumers can save money and prolong the wearing life of present wardrobes and household fabrics. In addition, Dr. Lyle and Mr. Oehlke will give suggestions on how to make suitable fabric selections, as well as information about garment care labels, and a discussion on the garment care labeling statement issued by Senator Warren G. Manuon.

Additional topics will include home spot removal, fabric trims, new fabric samples undergoing tests, sample garments which have failed to provide normal service for some reason, and an open forum of questions and answer to complete the seminar.

The seminar is being sponsored by the Guild of Professional Drycleaners in conjunction with the Pennsylvania Fabricare Association and Nesbitt College. It will be open to the general public.

The seminars will be held on Friday, Nov. 14, starting at 9:45 AM.

## Commuters Conserve Cash

From the Commuter Coalition  
Last Wednesday, I was riding the 5:47 Trenton Local back to Bucks County, and I was aware of a Drexel commuter lurking in the center of the train. Eventually, the conductor arrived and she handed over a ten trip ticket. Asking around on Thursday, I found that many of the Drexel commuters were not using the discounts, they are entitled to. So I've prepared this short primer on transportation.

Penn Central - Off hour rates are lower than rush hour rates. Example: 30th to Cornwells Hgts. one way ticket: 80¢ off hour, \$1.05 rush hour. Ten trip tickets are available - use them for rush hour (e.g., 10 for \$9.75). If you have classes every day... P.C. has a student discount monthly ticket. This is available at a 20-30% discount. This allows unlimited number of rides in either direction during the month for which it is issued. A \$31 student ticket saves \$15.20 over individual rush hour tickets, \$4.20 over individual off-hour tickets, and \$11.90 over 10 trip tickets. Monthly tickets can be purchased by following this procedure.

1. Get a student ticket form from the ticket clerk and fill it out.
2. Take it to the registrar in the Main Building, where it will be stamped (be prepared to show your I.D.).
3. Take your stamped form and your I.D. and/or matriculation card with cash (preferably) to the ticket clerk and pick up your ticket.

Reading R.R.  
The Reading does not have student tickets. It does have 10 trip, off hour, and rush hour tickets. If you use this line, buy these tickets.

The Reading is inherently more expensive than the P.C. because, to get to Drexel's hallowed halls, you usually take the subway to Thirtieth. This costs an extra 70¢ per day.

Patco

If you come in by Patco, there is a reduced rate for taking the subway... use it.

SEPTA  
For college students, there is no student rate, although several college commuter groups are petitioning for reduced fares.

Outside the city, SEPTA fares increase exponentially with distance. SEPTA runs a zone system where it is possible to fork out \$1.05 for a six mile stretch... and they wonder why nobody uses it!

Combinations  
One very little known trick is the rail-bus ticket. In fact, some veteran commuters pay less for combination rail-bus travel than for straight bus travel and it's faster. For information, contact your ticket agent.

Driving  
If you can't use other methods of transportation - car pool. The Commuter Coalition has lists of possible car pools and will furnish information on available riders/drivers at their office. Park your car on the street if possible, but carry enough tokens for the garage in case you can't find a space. Some streets allow parking after 9 or 9:30 for 35¢. You can leave your car in the library lot until that time. Beware of Rhinos. Chestnut Street in front of the DAC allows parking after 9:00 for one hour. (but, if not checked by police - all day). 34th and 35th Streets after 9:30 - read the signs and note tow-away times.

If possible, take the Penn Central when the Reading P.C. lines serve the same area (Chestnut Hill). The little gas it costs saves frustration, time, and subway fares.

### Tuesday is Deadline for Advertisements



# The 3606 Shop

3606 CHESTNUT

# Anniversary Sale

Starts today! Storewide savings in every department! Great buys for all! Just in time for Christmas!



Open Mon.-Fri. 8:00-6:30; Sat. 9:00-6:00

## Artists and Design Majors

Do you have a sketch, line drawing, or illustration that you would like published? If so, bring it to the Nesbitt Hall lobby between 2:30 and 3:00 PM on Wednesday, Nov. 19th.

The MAYA Magazine staff will photograph it for possible inclusion in the 1976 issue of Drexel's literary arts magazine. You may pick up your original one hour later in the Nesbitt Hall lobby.

## Food Services Compared: Drexel Rates Low

by Mary Mancini

A comparison study of four area college cafeterias revealed that Drexel's food service is inferior to the others. The three categories considered in the survey were method of production, price, and the proportional food amount. Three of the colleges, Temple, LaSalle and University of Pennsylvania, were chosen at random. The fourth school, West Chester State was chosen because Cuisine Limited, Drexel's food service company, also operates there.

Cuisine's policy at West Chester differs drastically from its practices here. The college has a snack bar and dining hall which Cuisine caters. An average meal at the snack bar includes a large drink, steak sandwich, vegetable and dessert and costs 25¢ less at West Chester than here. Also, a meal ticket system is available at West Chester which permits students to pay \$1.00 for lunch or \$1.50 for dinner and have the option of unlimited portions. As for their variety of meals, their food service committee has complete control of

the food contract. Generally, a four week cycle is organized at the beginning of each semester and can be changed if the committee isn't satisfied with Cuisine's service. As for Cuisine at West Chester, prices tend to be lower and service more satisfying.

On this average meal basis, the colleges placed in order of lowest price to highest accordingly: West Chester, LaSalle, Temple, Drexel and U. of P. The method of food production was through a catering service, with the exception of LaSalle. Usually mass-produced food accounts for the necessary adjustment in taste buds when eating at a college cafeteria every day. But since the food at LaSalle is bought directly through the school and not a catering service, prices tend to be lower and the food more appetizing.

Currently, the cafeterias of U. of P. have been closed due to strike and a meal ticket refund is returned to each student every day. If this were to happen at Drexel, some people might consider it an improvement.



Rain water damages the 5th floor of Matheson Hall.

## All Wet

by Olena Stercho

Faculty members with offices on the fifth floor of Matheson Hall, are rapidly learning that roofing is at best an unscientific business. During the torrential rains two weeks ago, leaks sprung up in the ceiling of the southeastern corner of the building, causing sections of ceiling tile to fall out and permitting water to drip into offices.

According to Howland Taft, Manager Maintenance and Construction, Physical Plant, the source of the leaks has not been identified to date. It was suggested by Logan Roofers, the company employed by Drexel to examine the roof, that gravel was hiding possible cracks. Therefore, Drexel maintenance men are now clearing off areas on the roof above the leaks to see if any trouble spots can be pinpointed. Taft noted that this was substantially cheaper than refurbishing the entire roof, particularly because Drexel workers are doing the job.

In the interval before permanent repairs on the roof can be made, all damaged ceiling tiles will be removed, but not replaced with fresh ones. Taft said that in case it rains again before a repair job is done, he doesn't want to risk ruining new tiles. He hopes that the course of the leaks will be isolated by the end of this week.

**\$5.00**

## Freshman Orientation Fee Accounted For

by John Mastel

Recently some students have expressed displeasure with the five dollar orientation fee levied on each freshman at the beginning of the term in September. Dean of Students, Arthur Joblin, however, feels that the \$5400 collected was put to good use. Essentially, the money was allocated to six programs: the coffee and donuts on Registration Day, the commuter lunch, the continental breakfast and coffee provided to the residents in the dormitories, the movie Dirty Harry which was shown free of charge to the freshmen, the Saturday Night Social, where food and music was provided, and the survival handbook. The fee also helped to defray the cost of the numerous mailings to the freshmen.

Joblin admitted that there were scheduling problems with this year's program. Not enough time was allocated for certain parts of the program. And most upsetting to students, the registration lines were fantastically long, a wait of over an hour not being uncommon. These conditions will definitely be improved in next year's program.

Joblin is interested in orientation as a continuing program throughout the freshman year. In July, during pre-registration, freshmen are given their first introduction to the school. During September, about 75% of the orientation occurs; this is when the students officially register and begin classes. During the third week of classes, Activities Day is held to acquaint the freshmen with the various extracurricular activities available at Drexel. A cooperative education orientation program will take place sometime in November. Finally, all the freshmen will be brought together in April to aid in the transition to their sophomore year.

Dean Joblin feels that the orientation program grows better each year. G. William Zuspan, Dean of Freshmen, echoed this sentiment, expressing great praise for this year's freshmen class. Unlike many past years, students came to Drexel in September ready to begin classes. Dean Zuspan also had words of appreciation for the upperclassmen who helped to make this year's orientation program successful.

## W/F Dropped

by John Mastel

The withdraw-with failure policy has officially been eliminated at Drexel. According to Dr. Irvin Miller, Assistant Vice-President for Academic Affairs, it was possible for a student withdrawing from a class to receive one of two grades prior to this change: a simple "w" (withdraw-with-failure) grade. Which of these grades the student received was the instructor's prerogative.

Dr. Miller said that the policy was originally instituted to provide a distinction between the student who withdraws for a personal reason and the student who withdraws because he or she is having problems with the work.

Today this policy is no longer in effect. In recent years, professors used the withdraw-with-failure grade with declining frequency, and it began to lose its significance. For this reason, a poll of the faculty was taken, which revealed that the policy was as unpopular with instructors as it was with students. Now a withdrawing student will only receive one grade, a simple withdraw.

MENU	
SOUP	
CHICKEN RICE	
CUP 30	BOWL 35
LENTIL	
ENTREES	
BREADED VEAL CUTLET	85
BROWN GRAVY	
RIGATONI MEAT SAUCE	85
BEEF POT PIE WITH	90
FRESH GARDEN VEGETABLE	
BISCUIT TOP	
VEGETABLE	
WHIPPED POTATOES	
SPINACH	
HOT CINNAMON APPLE SAUCE	
MONDAY TUE WED 7:30 6:30	
THUR - FRIDAY	

West Chester, LaSalle, and Temple meal prices are lower than Drexel's

## Board Head Chosen

Harold A. Shaud, a 1989 graduate of Drexel University, was named Chairman of the Board of Trustees, replacing outgoing Board Chairman A. J. Drexel Paul, Jr. Shaud, whose term on the Board expires in October, 1978, was chosen at last month's meeting.

Currently president and chief executive of Campbell Soup Co., Shaud received a B.S. degree in Commerce from Drexel. He has served in various capacities at Campbell Soup since he joined the concern in 1942.



**20% OFF**



SKIRTS THAT WERE \$10 to \$27.50 ARE NOW \$8 to \$22. top names like levi, faded glory, vicerox and prime cut are styled mini, midi & more denim, corduroy, khaki cloth & pre-wash are flare, wrap, A shape & bib front. 3 to 13.

FOR YOU & YOU

I. GOLDBERG 902 CHESTNUT - WALNUT

Do You Have...



**WARTS, DRY SKIN, ACNE,  
DANDRUFF, ATHLETES' FOOT  
OR ECZEMA**

If you have any of these conditions and are interested in participating in a study contact  
**EV 7-8400**

Or stop by Suite 226, 2nd Floor, **University City Science Center,**  
**3401 Market Street** N.W. Corner, Phila., Pa., 19101



RESEARCH LABORATORIES, INC. conducts dermatological tests in controlled programs. Volunteers are paid for their participation on each study.

# Drexel Admission Standards Flexible

by Jack Ringlestein

Joe Smart applied for admission to Drexel University. He was in the second quintile of his high school with a B plus grade average. Joe's application also includes a good recommendation from his high school guidance counselor. Unfortunately Joe does not test well; his score on the SAT was 850. However, Joe probably was accepted to Drexel. This is due to the admissions philosophy maintained by the Office of Undergraduate Admissions at DU.

As John R. McCullough, Dean of Undergraduate Admissions, emphasizes, there is no one specific criteria that cuts anybody out of Drexel. His office strives to get an overall, total picture of each admission applicant. In the process of accomplishing this, there are four main "criteria" considered important by the Dean and his staff. (1) Class rank is high school: In Drexel, 65-70% of entering Freshmen were in the top two-fifths of their high school class. The minimum rank found among Drexel's entering Freshman is the third quintile of his/her high school class. (2) Overall grade average: An applicant's grade average in relationship with his/her rank is also an important factor. The average grade average of entering Freshman is approximately 85. (3) Recommendation from high school guidance counselor: This can prove

to be the deciding factor in whether or not an applicant is accepted. The admissions office is interested in learning from a guidance counselor why Drexel should accept the applicant, not necessarily that the applicant is college material. If, for example, a student did poorly on his/her boards and had a grade average of 80, putting him/her in the second quintile, a recommendation from a guidance counselor could be very helpful. Suppose the recommendation went like this:

"Dave did poorly on his boards as he does not test well. His rank and grade average are indicative of the many hours he has spent in extra-curricular activities in school and in community affairs. I recommend that Drexel accept Dave, as his experience in dealing with people should enable him to do well in Drexel's career-oriented curriculum." This sort of recommendation is illustrative to the admissions office that the applicant is responsible and ought to do well at Drexel and, therefore, is a good risk for the University. (4) College Board Tests (SAT, sometimes ACT): At Drexel, test scores are the least important factor involved in the acceptance of Freshman. The admissions office does not set a particular score, say 900, and say that any score below deems the applicant for admission to Drexel.

The test scores are supplemental to all other criteria. The scores serve to reinforce the connotation, whether positive or negative, toward acceptance of the applicant.

Following is the average SAT scores for the Freshman class which entered in September 1974: Engineering-verbal 520, math 610 Science-verbal 540, math 620 Bus. Ad-verbal 480, math 520 560

The overall range of verbal scores was 240-760 and for math 250-790.

Additional factors in admissions consideration include an applicant's activity in the community and his/her extra-curricular school activities.

The important fact to understand is that the Admissions office "bends over backwards" to accommodate applicants by looking at the positive side of applications. Unlike other schools such as MIT and the Ivy league schools which look for reasons to not accept an applicant, Drexel looks for why they should accept an applicant.

Drexel at this time is in the midst of a big struggle to maintain its quality rather than drop like the rest of the country has done. The Admissions office is currently trying to increase enrollment and retention while cutting down on withdrawals. Enrollment has been low because of the engineering

scare five years ago. Admissions is in the process of rebuilding enrollment to what it was five years ago.

Asked if there was a drop in the overall academic quality of current Freshman as compared with the Freshmen of five years ago, Dean McCullough responded with qualified yes. This is illustrated in the following facts: board scores have dropped, although Drexel's scores have of recent consistently (last year and this year) been 60-80 points higher than the national average, applications for admissions and enrollment have been down meaning that the base in which to select students is smaller, the necessity to increase enrollment, and the creation of special programs, i.e. Act 101, which have existed for only five years. Special programs enable the Admissions office to select more

students with the hope that whatever the student lacks academically may be rectified in the special program.

Each year President Hagerty gives Dean McCullough a goal to reach in terms of new students. The goal for September '75 was achieved. It was 1350 new Freshmen and 217 new transfers. For September '76, the goal is 1375 new freshmen and 250 new transfers. Enrollment is expected to increase during the next three years because the current senior, junior, and pre-junior classes were all affected by the engineering scare. Dean McCullough would like to maintain the 1300-1400 enrollment range of freshmen for the next few years. This may be difficult due to the reduction of high school graduates and the impact of increased college costs. Drexel's enrollment goal is 5200 for the year 1978.

## Planned Expansion

continued from page 3

power of the money. The delay is also costing students, since a dorm is a self-amortizing operation and higher construction costs add pressure to the rent structure. Even if Drexel obtained a site today, a substantial period of time would be necessary to draw up plans and hire contractors. Construction alone, with expected delays, would take two years.

During the duration, the housing crunch is expected to intensify. McFarland said that although student enrollment projections do not predict a significant increase in admissions in the next several years, more students are expected to live on campus because of the wider geographical range Drexel is drawing applicants from and because more students are finding it desirable to live at school. Furthermore, apartment vacancies are vanishing rapidly in the Powelton area. McFarland reported that many rooming houses are now being reconverted into single family units. Property values are skyrocketing in the neighborhood and will continue to do so, as Powelton becomes a desirable

place to live.

McFarland said that the new residence hall will be patterned after Calhoun and Kelly, housing 400 students. This size is considered to be more manageable and more human than a larger structure. Furthermore, it is a more fundable package, since long-term financing covers a higher percentage of a smaller project than a massive one.

It is hoped that a reasonable size site can be obtained for the residence hall so that the visual impact of any architect's design can be maximized. In addition to a properly placed building, McFarland said that provisions will be made for plenty of green space. "We feel that as part of our commitment as a redeveloper, we must make the surroundings of a building attractive."

After the new dorm is completed, Drexel plans to build a dining area in the vicinity of the residence halls. Other construction plans in the offering include two additional dorms, a graduate studies center and an addition to the library. To date, Drexel has spend \$50 million on the construction of new buildings.

## Classifieds

1968 TRIUMPH Spitfire, good body, trans, rear, seats, gauges, top sell parts or whole. Mike CL9-2093

4 WEEK SELF HYPNOSIS class now forming on campus. Enrollment limited to 15 people. \$25. for students \$40. non-students. Contact Larry Guyer V18-6277 or RE9-3581 from 6-10 PM.

PAPERS TYPED: Manuscripts, term papers, resumes, notes, etc. 75¢ a page. Will do rush jobs. Contact Roseanne at 895-2976 from 9:00-4:30. Mon. thru Fri.

ONE BEDROOM APT. - Available immediately. Modern University East Apt. located at 33rd and Powelton. Call EV2-0755 for info.

APARTMENT FOR RENT: Jan to June sublet. Near transportation, 15 min. biking to Drexel. Call SA 9-2133 after 3:30. ym14

LOST: Gold Omega watch with brown band. Reward. Please contact Jerry. 333-8614. (ym7)

HELP WANTED: Accountants - for CPA Review Course - licensed by State of Penna. Suburban location-Sheraton Hotel, Valley Forge exit of Pa. Turnpike. Limited class size. Classes start first Monday in December. For information call 215-353-8827.

(xm14)  
SKIS: Fischer Imperator - 205 Cm. Used 2 seasons. Very good cond. New, \$250. Sell now for \$120. Phone 222-9688. Ask for John in room 519.

PAPERS TYPED: term papers, letters, resumes, notes, reports manuscripts, etc. Professional typist with over two years experience. Rush jobs done. Rates: \$1 per page. Call Denise at 895-2585 during the days or 222-9607 evenings. yk31

EXPERT TUTOR (PHD candidate) available reasonable rates for undergraduate course in science, engineering, and maths. For additional information, call EV 7-7268 evenings. ym14

HELP WANTED: United Parcel Service has part time immediate openings 10 PM-1AM shift. 5 days a week. Rate \$3.42 per hour to start. Interviews daily, Monday thru Friday, 3 PM to 6 PM, 15 Oregon Ave., Phila., Pa. 19148. xm7

# FALL WEEKEND

NOV. 13, 14 + 15 - \$3 weekend ticket

JACK LEMMON  
in a MURDER MYSTERY  
"SAVE THE TIGER"

FILM!

thursday @ 8 p.m.  
Stein aud.

PARTY!

LIQUID REFRESHMENTS

friday IN THE  
Grand Hall csc  
9 pm - 1am.

CONCERT!

BOB DOYLE  
AND THE  
BUFFALO CHIPKICKERS

saturday  
@ 8 p.m.  
Grand Hall

## STUDENT FURNITURE DISTRIBUTION USED/NEW FURNITURE

4100 Walnut Street (Urban Developers Bldg.)

Including  
Beds  
Dressers  
Desks  
File Cabinets  
(2-4 drawers)  
Rugs  
Lamps  
Kitchen Sets  
Sofas  
Chairs

Open Mon. - Sat. 9:30 - 5:30 or call 349-6700 anytime



# Israeli Consul General Speaks at Drexel

by Karl Schaeffer

As part of a city-wide Israel Awareness Week, Emanuel Shimoni Consul General for the Philadelphia area spoke on the current Middle East situation. Mr. Shimoni's main topic of discussion was the recent Egypt-Israeli agreement and Egyptian President Anwar Sadat's visit to the United States.

Shimoni emphasized the real sacrifices Israel is making in order to gain lasting peace in the Middle East. Militarily, Israel gave up two vital passes in the Sinai which are of vital strategic importance to Israel. As part of the agreement, the United States is sending 200 civilian technicians to man observation posts at these two passes in order to keep a watch on aggressive activities on both sides. The other major part of the agreement was the giving of Israeli oil wells to Egypt. These oil wells are of significance in that they provide 55% of the oil used by Israel. Shimoni asserted that while Israeli concessions were real and

tangible, the Egyptian concessions were political and rhetorical in nature.

Shimoni likened Israel-U.S. relations as that of a good friend. He noted that the recent Israel-Egyptian agreement came about only after Henry Kissinger's now famous "shuttle diplomacy." He also added that they are very interested in stabilizing the Middle East as evidenced by the willingness to finance the listening posts.

Shimoni related that the \$2.3 million is not payment by the U.S. to Israel for the concessions made by Israel to the Egyptians. While part of the aid will be spent on establishing a new Sinai defensive line and absorbing the cost of buying oil, the recent agreement doesn't affect the aid package and that Israel would have asked for an aid package whether or not the agreement was signed.

Shimoni said that even with the aid, the Arabs still maintain a 3 to 1 edge in military hardware and personnel.

Regarding Sadat's visit, Shimoni said that Egypt's backing in a United Nations anti-Zionist resolution is actually breaking part of the agreement. Egypt promised to stop belligerent behavior towards Israel, and tacit backing of this resolution is in blatant disregard of the recent agreement. The proposed resolution briefly states that Zionism is racist, Israel is Zionist, therefore Israel is racist. Shimoni said that Zionism is 'the realization of a historic home land for Jews and is in no way discriminating against anybody. Shimoni felt that this was an unexplained paradox on the part of Sadat.

When questioned about the effect of Sadat's visit in U.S.-Israeli relations, Shimoni said that the visit would in no way jeopardize relations and will help stave off future friction because the U.S. is now in a better position to get both sides to sit down and talk.



Emanuel Shimoni speaks to Drexel Hillel about the current Middle East

continued from page 3

## Funds for Drexel

Lord's plants, Peaks of Progress, and Continuing Education Seminars.

Aside from the people in Corporate Relations contacting various companies, other people within Drexel are in constant contact with industry. In many cases, these contacts provide an opportunity to acquire funds for Drexel. If a faculty member is seeking research money, he may often ask Corporate Relations to help him expedite the circumstances surrounding the situation. The office is able to provide an overall view of the fund raising situation and provide legal and administrative help in putting together an aid package.

In other circumstances, a company that may employ co-ops

or Drexel grads may approach Drexel with the idea of giving the University some money. The office will help the company decide how to put this money to good use. The money may be utilized for scholarships or for lab equipment.

Money comes into Drexel earmarked in one of two ways; restricted or unrestricted. Unrestricted funds can be used in any fashion as decided by the University. Restricted funds are designated by the company giving the funds and may be used for faculty salaries, equipment, scholarship or project development.

Mancuso stated that by seeking out these funds, the Office of Corporate Relations provides essential service to the students of Drexel. By getting private industrial funds the office does its share in keeping tuition increases to a minimum.

## A Little Yellow Truck That Doesn't Pollute

by Kevin Hassan

The wave of the future in intercity trucking is here, materialized in the form of a little yellow truck seen in front of the library last Tuesday afternoon.

The "little yellow truck" is a totally electric industrial vehicle manufactured by Batronic Corporation for the Electric Vehicle Council to study the feasibility of electrically powered local transport. Goliath, the first such vehicle delivered by Batronic, was purchased by Lead Industries Association to demonstrate lead-acid powered electric vehicles.

Forget comparisons with slot cars and golf-carts; this truck is for real and competes quite nicely with "standard" gas burning trucks of a similar size. We hitched a ride on Goliath for a short hop down through Center City traffic and were pleasantly surprised. Expecting something slower than a Commonwealth Hall elevator, we found Goliath keeping up with and even passing the mad taxi drivers and VWs on Chestnut Street. But the real surprise was what we missed. Goliath, in operation, makes virtually no noise and very little of the typical vibration associated with conventionally driven trucks. The only sound audible was a low buzz from the driving electronics. At a distance of twenty feet, with the truck under full acceleration there is no audible noise. When the vehicle stops all is quiet in the cab since the motor doesn't idle; it just stops dead.

For the technically concerned, Goliath has two battery banks of twenty-eight cells apiece, for a total of 56 cells developing 112 volts at 330 ampere hours capacity. Translated into Philly Electric-ese, this is 37 Kilowatt-hours of electricity in a half-ton package. The vehicle's range varies between 30 to 50 miles of driving on a charge, charges up in 6 to 8 hours on 220 volt service and carries a 1000 lb. load. It reaches 25 MPH in a bit less than 8 seconds and has a top speed of 55 MPH, obviously not in the dragster class. The batteries are mounted on trays easy changing; if it is necessary to run for more than one charge, a second set of batteries can be kept on hand and popped in when necessary.

The most attractive features of Goliath and similar vehicles are their inherent reliability (aside from relay contacts, motor

brushes, and batteries, there is little to wear out), noise and pollution-free operation, and of course, cost of operation.

Critics may point out that the electric companies must pollute to generate power for electric cars but it is well known that on a kilowatt-hours produced per "unit" of pollution, the power plants are much cleaner (and more efficient) than your average V-8.

As far as cost is concerned, a study conducted by the US Postal Service (known for their own spectacular efficiency) showed that taking into account charging and rental cost of batteries, all maintenance costs (gas, oil, parts of the electric and gasoline vehicles driven 7000 miles a year, the electric truck cost \$1931 a year, while the gas truck cost \$3288 to run under identical operating conditions. The high initial cost of the electric truck (\$11,000) is offset by the prediction that the electric truck will last twice as long as the gas-powered model.

For those of you so psyched by the idea of having the first electric truck on your block, the price for Goliath is \$7500 and batteries; for a mere \$1500 more, you get a battery pack. You might want to rent them, though, as they wear out after 700 charges. More realistically, if a company has a need for a fleet of ten or more vehicles for in-city or near suburban transportation and wants something quiet, reliable, and choke-gasp free, pick up a Goliath. Electric Dragon Wagon, anyone?



## LETTER TO THE EDITOR

Editor:

I have been giving a great deal of thought as of late to the various problems plaguing the hallowed halls of D.U., and I've come to the conclusion: you've got problems. To be more specific: managerial problems. Let me pinpoint several problematical areas: 1) overcrowded dorms; 2) overcrowded classroom facilities; 3) undercrowded parking facilities. To put one and one and one together - 3! No, the answer is reallocation of resources (i.e., juggling things around a little). All you have to do is convert part of the parking garage to living quarters, and part to classrooms. Viola! With a little imaginative decorating, your problems are solved.

Sincerely,  
Connie C. Erned

P.S. The commuters can sleep in their cars to save on furniture rentals.



Everything's cool at Drexel. Only nuds don't watch the Fonzes

## HOUR GLASS



Philadelphia's Only  
**SCIENCE FICTION**  
Bookstore

341 S. 13th St.  
(Near Pine)  
732-8852

VISIT Our Energy Saving  
Appliance Headquarters  
3925 Walnut Street

ENERGY SAVING APPLIANCES!

### Dormitory Needs!

Radios • Clocks • Tape Recorders  
Solid State Portable TV Sets

### PERSONAL CARE

Hairdryers • Hot Combs

### Economical Cooking

Electric Pressure Cookers

Coffee Makers • Presto Hamburger Makers

Dorm Size Hoover 2.9 C.U. ft. Refrigerator

TEXAS INSTRUMENTS CALCULATORS

master charge - Bank Americard accepted

PHILADELPHIA ELECTRIC COMPANY



# A Soothing Drive in the Country...

by Fran Hartwich  
and Sue Wright

"Nothin' Never happens at Drexel on weekends, so why should I come in on Sunday?" There's going to be a road rallye that's going to out do all other road rallyes Drexel ever had. "That's nice. What's a road rallye?" The term road rallye usually conjures up visions of gran prix races through Monaco. Actually, road rallyes are nothing like that. Some rallyes held by sports car clubs are similar to army night marches (Take the fork that gives you a heading of 43 degrees for 2.3 miles). Others require a specific distance to be covered in a specific time or require that rallyist to take the shortest distance between two known points. In some, landmarks are given and the rallyists have to find a way to get there. Some are "hare and hounds" rallyes and most require sketches of landmarks and peculiar signs. The best points of all these rallyes is included in the clue rallye. In this type of road test, the rallyists are given a set of remarkably ambiguous instructions. Included with these are riddles, simple algebra, questions, clues, elapsed mileage instructions, speed limits, timed legs, and hidden checkpoints. The time between instructions varies between five seconds and five minutes. Some examples of clues are:  
turn right at the elephant  
go where all traffic goes  
turn toward the green house  
left at the octagon  
don't cross the tracks . . .  
And finally, first, second, and last place winners are determined by

the total number of penalty points (lowest-highest). Each rallyist is given penalty points for:

- every minute over or under the course time
- every mile over or under the course mileage
- opening panic packs (emergency maps)
- missing check points (or entering from wrong direction)
- missing landmark questions
- missing drawings
- running over checkpoint crew.

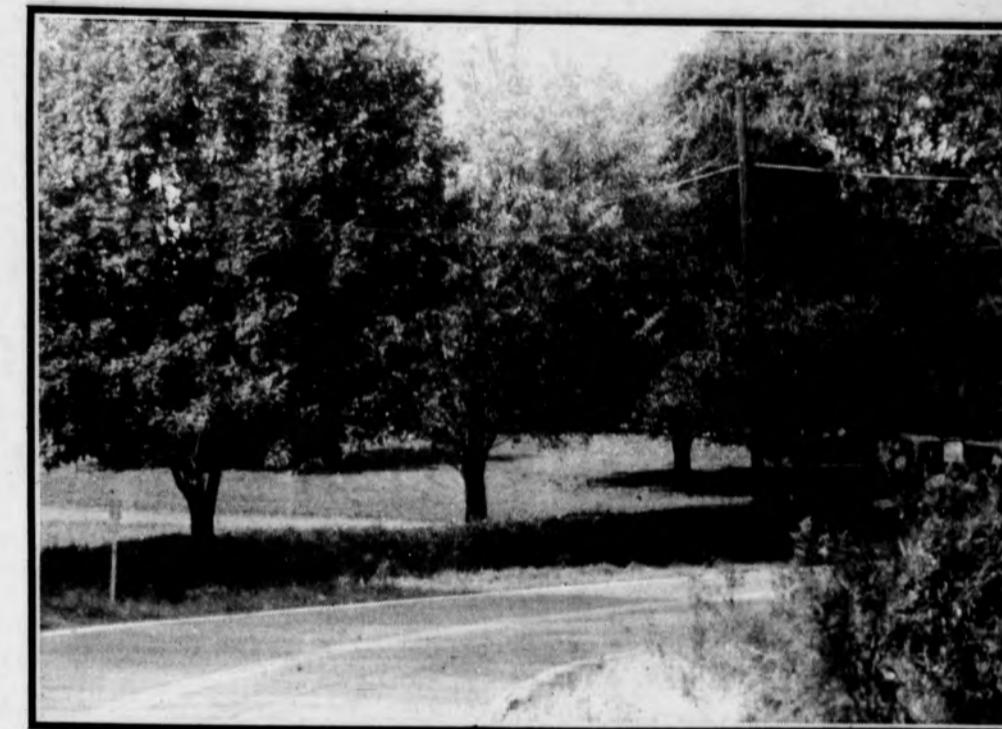
Even if you know the area, watch out. You can rack up a number of penalty points, if you ignore posted speeds or take a "short cut."

Okay, now's the time to decide whether or not it's really worth getting up early Sunday morning to use up the gas to drive around the country. The answer is quite assuredly, "yes," for not only will you be able to take in all the wonderful scenery and fresh air, but you can get a PARTY after the rallye. The rallye is scheduled to start Sunday, November 9, at 11:00, Drexel Field, on 43rd and Powelton (1/2 block N. of Market, at Fire house). Arrive before 10:45 to allow time for registering to read the rules and to do a final check out. Starting at 11:00, rallyists will leave at one minute intervals. Caution: follow the clues, not another rallyist. There are four checkpoints along the way, and at each time will be logged for each crew of rallyists. If you think you're lost, go back to the 1st clue. If you're really lost, open your panic pack, it will get you to the next checkpoint. Keep in mind, NO EXPERIENCE

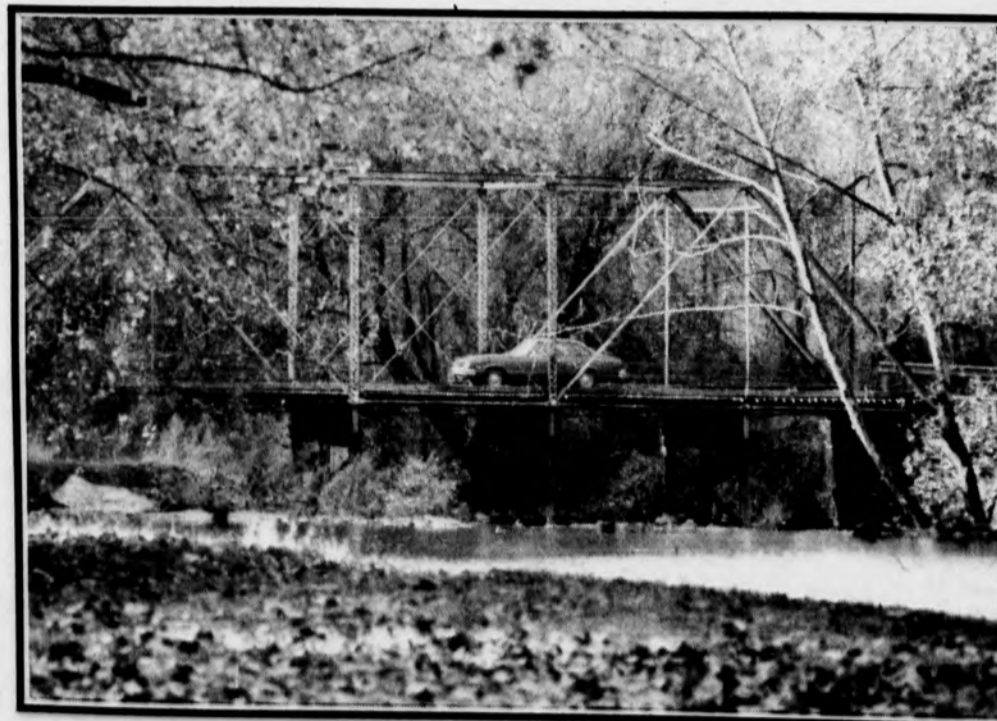
NECESSARY. The course is not laid out to stump novices. Anyone can do it. "Who can come?" The rallye is not limited to Drexel people (it's not just for commuters). The CC invited the Penn Commuters but the rallye is open to all local colleges. All that is needed is the rallye bug. "How many to a car?" There is no limit. Bring your friends. The more the better! But, please, no charter buses. To help offset the cost of the party afterwards, the rallye fees have been set at one dollar per person. The party will be held at Drexel Lodge on Route 3 near Bromall, Pa. There will be food and drink enough for a hoard of hungry rallyists, prizes for first, second and last, a roaring fire, music, munchies and warm company. "How can I be sure this is worth it?" The Commuter Coalition is determined to reverse the tendencies of Drexel happenings to bomb. We have 'the motley crew,' a group of hyper-active members who are devoting all their free time to this event. Our group is trying something another group of our size would never try . . . this either flies or we go bust! "Okay what else should I do?" We suggest you bring a car (not a cycle). A pretty full tank is a must! Maybe, bring some munchies. Bring a watch. Make sure your car's in decent shape. Get a good night's sleep. Bring a friend. Now come on out to the Commuter Coalition Road Rallye this Sunday, Nov. 9, 11:00 Drexel Field, 43rd and Powelton. Be ready to stay late! See y'all there.



## This Sunday Nov. 9



*Scenes you'll see if you don't get lost*



# COMMUTER COALITION ROAD RALLYE

# Looking Ahead



## To Music

Johnny Rivers is still alive and well and appearing at the Bijou Cafe Saturday. Spot lights on the "Secret Agent Man" of Rock and Roll. Two shows nightly at 9 and 11:30 p.m.



Johnny Rivers at the Bijou

Paul Simon may still be crazy but he's also one of the most exceptional performers around today. Give Paul a warm welcome tonight at the Academy of Music, where he will be doing one show at 8:30 p.m. LOVE222.



Singer Paul Simon at the Academy

Temptations will be doing their thing on the Valley Forge Music Fair stage until Sunday with soulful helpings from Kool and the Gang. Direct any further inquiries to the man at 644-5000.



The Soulful Temptations

Temple University Presents

### Dancers In Concert

Nov. 7, 8 8:00 p.m.  
Nov. 9 2:00 p.m.

Admission \$2.50  
Students with ID \$1.50

Tomlinson Theater  
13th & Norris Sts.

For more information  
call 787-8710

CHRISTIAN FELLOWSHIP  
AND BIBLE STUDY  
2nd & 4th Saturday  
of the month  
call GR6-5504

### RESEARCH

Thousands of Topics  
Send for your up-to-date, 160-  
page, mail order catalog. Enclose  
\$1.00 to cover postage and  
handling.

RESEARCH ASSISTANCE, INC.  
11322 IDAHO AVE., # 206  
LOS ANGELES, CALIF. 90025  
(213) 477-8474

Our research papers are sold for  
research purposes only.

Tower of Power will be assaulting the Bijou Cafe, Nov. 10 and 11. Features a horn section guaranteed to blow your mind! Get on down to the funky Broadway. Showtime is 8 and 10:30 each night.

Asleep at the Wheel rolls into the Main Point, Nov. 11 and 12 with shows at 8 and 10 p.m. nightly. An up and coming seven man outfit featuring country and western swing done with a rock and roll flair. Tickets only \$4.75 each.

Betty Carter, leading female jazz vocalist, lets loose on the Bijou stage, Nov. 12th thru the 15th. Also appearing will be singer/composer Al Jarreau brought back by popular demand. Call 735-4444 for show times.

The Chieftains, a seven man traditional Irish band, make their debut appearance at the Academy of Music, Nov. 13 at 8 p.m. Top instrumentalists utilizing fiddles, a tin whistle, Irish harps, a hammer dulcimer, an Irish elbow pipe, a bodhran, a wood flute, and a peach in a pear tree. LOVE-222.

Dave Mason brings his new mixed bag of funk 'n roll to the Spectrum, Nov. 14 at 8 p.m. Splitting the bill will be Little Feat, a tasteful treat indeed. And that ain't coconuts!

Leonard Cohen makes a special return appearance to the Philly area, Nov. 14 and 15, at the Main Point. Spend a rewarding evening with some of the man's sensitive sounds. Call LA 5-3375 for further info.

Rich Little zooms through his impressive line of impressions, Nov. 14th thru the 16th at the Valley Forge Music Fair. Call 644-5000 if you don't believe me!

Murray McLauchlan will be appearing at the Main Point until Sunday together with David Blue. Catch this unusual folk performer, born in Scotland, raised in Canada, and now in Philly, with two shows each night at 8 and 10 p.m. The number? - LA 5-3375.



## Looking Ahead To Theater

My Speciality is Being Right, features the World's foremost intellectual clown - G. B. Shaw. Tonite and Tomorrow at Hedgerow Theatre. Show time is 8:30 PM. Student price: \$3. Call 565-4855.

6 RMS Riv Vu, a hilarious Broadway comedy set in the Big Apple, plays at The About Town Players at the Lynnewood School. Lawrence Blvd., Havertown Friday and Saturday. Donation is \$2.

The Boys from Syracuse produced by the Penna. Players at the Harold Prince Theatre of the Annenberg Center, Univ. of Penn, 3680 Walnut St. Admission \$4. Curtain call at 8:30 PM. Thursday and Friday, 6:30 and 10 PM on Sat.

The Rimers of Eldrich presented at Villanova's Vassey Theatre. Admission \$3 and \$3.50. For more info, call 527-9783.

St. Joseph's College Bluett Theatre presents 3 plays to compliment the International Woman's Year program. Jean Anouill's "All's Well That End's Well", Sophocles's "Antigone" and C. Fry's "Lady's Not For Burning." All three plays will run simultaneously from Nov. 7-16. Curtain call at 8 PM. Student Admission \$1.

"Lysistrata" plays at Plays & Players, 1714 Delancey St. Student price is \$2.50. Call PE 5-0630 for more info.

"The Royal Family", a collaboration by Edna Ferbur and George S. Kauffman will be presented by the Drama Guild at the Walnut St. Theatre, 8th and Walnut Sts., Phila. Show times, are 8 PM Tuesday thru Sat.; matinees are 2 PM on Wednesday and Saturday. For more info, call 629-0780.

The McCarter Theatre of Princeton, N.J. will also present the Royal Family from Oct. 30-Nov. 9. Curtain call is 7:30 PM.

## Looking Ahead to Weekend Movies

SPB presents Elliot Gould and Don Sutherland in "S\*P\*Y\*S." Showtimes are 4, 7 and 9:30 PM in Stein Auditorium. The dynamic duo attempt to duplicate M\*A\*S\*H with limited success.

"Female Troubles" featuring Divine is showing at the TLA this week. "Snapshots" is showing at the Academy Screening Room.

"The Seven Samuri" and "Dodes'ka-Den" are showing at Penn's Christian Association tonight and Saturday at 7:30.

"The Lion in Winter" and "Juggernaut" are showing at Cinema 19. Showtimes continuous. \$1 admission.

See Errol Flynn in "Divebomber" and "Capt. Blood" at the Walnut Mall.

## Fall Weekend '75

Fall Weekend is almost upon us! This year, the activities of Fall Weekend will include a special showing of the flick "Save The Tiger" starring Jack Lemmon on Thursday, Nov. 13 at 8 PM in Stein Auditorium. Then, on Friday, there will be a party in the Grand Hall from 9 PM to 1 AM. Featured will be liquid refreshments and a band called "Rain". And to round out the weekend, there will be a concert on Saturday, Nov. 15 at 8 PM. The band featured will be the "Buffalo Chipkickers." A ticket for all three events will cost \$3 and can be purchased at the CSC main desk.



The "Buffalo Chipkickers"

TACO HOUSE

OPEN MON., TUES.,  
WED., THURS., & SUN.  
11 AM TO MIDNITE  
FRI. & SAT. TIL 1 AM

Home of Fine Mexican Food

Tacos - Burritos - Enchiladas - Tamales - Chili - Beans - Rice

Complete Dinners 1.99 & 2.79

39th & Chestnut BA 2-1950 Carry-Out

## ACCOUNTING AND FINANCE MAJORS

LET US HELP YOU PLAN  
AHEAD TO BECOME A CPA  
BECKER  
CPA  
REVIEW

Philadelphia (215) 735-3520  
Pittsburgh (412) 471-4333

1/3 OF USA

# Hooray for Potatoes

by Harriet Cohen

In recent years, a very popular vegetable has encountered a score of adverse publicity, much of it misleading, which has frightened away many of its formerly satisfied consumers. This vegetable, the potato, has been the victim of false rumor and twisted information, and sadly advertised as a fattening, nutrition-less starch.

Well, potato lovers, take heart, for contrary to this popular belief, the potato is a very nutritious and healthful food. High in Vitamin C, with a touch of protein, and only about 90 calories plain (about the same as an apple), the potato can be prepared a number of delicious ways. So, forget all the nasty gossip and enjoy that favorite food again.

## Scrumptious Potato Cakes

- |                      |                               |
|----------------------|-------------------------------|
| 1 egg, separated     | 1 tablespoon grated cheese    |
| 2 tablespoons butter | 2 tablespoons chopped parsley |
| 1/2 teaspoon salt    | 2 cups hot, riced potatoes    |
| 1/4 teaspoon paprika | sifted bread crumbs           |
| 1/4 teaspoon pepper  |                               |

Add egg yolk, butter, seasonings, cheese, and parsley to potatoes. Shape into cakes, dip into slightly beaten egg white (which is diluted with 2 tablespoons water). Roll in crumbs and either fry in deep hot fat, or pan-fry until browned.



## Potatoes Ole

- |                                    |                             |
|------------------------------------|-----------------------------|
| 1 tablespoon minced onions         | 2 cups cold boiled potatoes |
| 2 tablespoons chopped green pepper | diced                       |
| 2 tablespoons chopped pimento      | 1 teaspoon salt             |
| 4 tablespoons oil                  | 1/2 teaspoon paprika        |
|                                    | 1/4 teaspoon pepper         |

Saute onion, green pepper, and pimento in fat until soft, add potatoes and seasonings and cook until heated through.

# Yum-Yums

by Maureen Waters

For those who enjoy the quaint atmosphere of Society Hill, Head House Tavern constitutes a special treat. Nestled in the heart of Philadelphia's restored section, the tavern tries to recapture the appearance of an 18th century Ale House. On weekends, guitarists enhance the image by providing live entertainment.

Although the food seems to be prepared with care, the number of entrees is limited. Escargot, Onion Soup, and Shrimp make excellent appetizers and Head House Tavern, fulfilling the old, colonial inn tradition, also makes excellent Beef Stew and Kidney Pie. A Petite Filet Mignon at \$4.50 is the most expensive item on the menu, a reasonable price considering the portion size and quality of the meat they use. The establishment also carries a decent selection of beers, ales, and Stouts for the connoisseur, one house specialty being Tiger Head Ale a supposedly Robust drink brewed in the same laudable manner as it had been in 1774.

Head House Tavern could be summed up as a pleasant little place, tastefully decorated, having a quiet, relaxed atmosphere. The clientele is mostly the younger set from the surrounding area, who along with other partiers can be seen packing the bar each weekend.

The limited but acceptable bill of fare and the cozy atmosphere provided by Revolutionary furnishings make Head House Tavern a good place to remember on a visit to Society Hill. Parking is not too difficult to obtain nearby. So in all circumstances, try and stop at Head House Tavern for the Bicentennial.

# Shaw at the Annenberg Center

by Steve McMahon

A darkened stage revealed two figures, one hiding, the other talking to a Sphinx. Was this man deranged by talking to this monument of stone?

The Shaw Festival's Production of "Caesar and Cleopatra" began on this dramatic note, with Rome's Julius Caesar paying tribute to another God - the Egyptian Sphinx.

Despite the witty dialogue between the cast, and the comical scenes, the dramatic overtone flowing throughout the play was impossible to miss.

Edward Atienza portrayed Caesar as a middle-aged tyrant, whose philosophy and shrewdness hadn't dimmed with the passing of years. And Caesar certainly wasn't about to lose his senses over the lusty Cleopatra.

Domina Blythe's Cleopatra performance was one of virtuoso skill. The aggressive and unscrupulous Cleopatra provided the comic relief needed to balance the play. Her bungled attempts to match wits with the wily Caesar led from one hilarious scene to the next.

"Caesar and Cleopatra" held many insights. One was the transition of the girl-Cleo to the woman-Queen under the careful tutelage of Caesar. The subtle changes of Cleo's character followed innumerable twists and turns, the end result of which was a flawed brilliance which was rather saddening. Power, and the wisdom to rule can't be transmitted by inheritance or teachings. To learn it, is to embark on a rough and precarious road, with a dubious end.



The opulently staged production promised many delights for the audience. The Shavian characters featured included: Britannus (James Valentine), Rufio (Maurice Good), Pothinus (Gille Fenwick) and Fatatateeta (Mary Savidge) mispronounced (to-tan-te-a), plus others.

The two most incongruous members of the cast were the characters of Britannus and Eatateeta. Britannus's eccentricity was more by Shavian design, but Fotatateeta was less by accident. Her outlandish costume and aggressive mannerisms lacked believability.

The amazing Britannus leveled denouncements at the 'Egyptian custom of marriage between the royal brother and sister,' with an appropriate "I Say it's a Scandal." He equally defended the intransigencies of the British culture, with the same British aplomb reserved for the Egyptians.

The clash of three converging cultures proved interesting, as it highlighted the differences between Rome, Egypt and Britain. Cleopatra's Egypt, similar to Greece had reached its peak and the empire was quickly slipping to its decline. The highly civilized Egypt gradually succumbed to the Roman hordes. When Cleopatra asked Caesar what treasures Rome possessed, Caesar aptly replied, "It has its sons!"

The technical problems the production had to surmount were incredible. The three acts, with different scenes required a change in stage sets for each event. The stage crews can be applauded, for they handled these technical feats with imagination and expertise.

Caesar and Cleopatra is a unique theatrical experience. The play received a warm response from the opening night audience and is well worth the price of admission to go and see.

# Poetry Clips

## Snakes Alive

Heba La Sheba, The Snake Dancer,  
Had a thing on me.

One day I got a rat'ler in the mail  
Then a boa came by Railway Express  
What was I to do?  
My lover's a snake lover too.

And I'm afraid to open the next box  
It's marked: Caution  
Danger  
And Fragile.

I see eyes thru the air holes  
That look like they don't like me.  
Heba La Sheba, what are you trying to do?

You've got my nerves in a coil  
My eyes rattle in their sockets  
A poisonous hiss crosses my lips  
And when I go to bed at night  
I think of you  
Then check the streets for sliding vines.

Heba La Sheba, you've got your grip on me.  
You Snake Dancer!

T. W. Page



# HUSTLE!



SUPER NEW DISCO AT  
**THE HILTON ON THE PENN CAMPUS**  
Civic Center Blvd. at 34th St. Philadelphia, Pa. 19104 (215) 387-8333

friday night flicks

PRESENTS:

show times

4:00

7:00

9:30

ONLY 75 c

by



Stein Aud. Nov. 7

# Bluegrass Grows

by John Govsky

Bluegrass was what the crowd came to hear at the Main Point Saturday night, and they sure heard a lot of it. Opening the show was a Canadian guitarist, who called himself Valdi. His simple but sincere lyrics were about the life and land he knew in the woods of Newfoundland. "Landscapes" is a song typical of his warm country music. Valdi also writes about how it feels to be on the road for a long time, but lets it be known that he thoroughly enjoys what he is doing. He played many selections from his new album recently released in the U.S., which is a collection of cuts from his three previous Canadian releases.

By the time Valdi left the stage, the standing room only audience was warmed up for the Dillard's. The Dillard's started off with a very short vocal arrangement call "I'll Fly Away," and went right into "Nobody Knows," both performed exactly as recorded on their "Wheat Straw Suite" album. Throughout the show they mixed their bluegrass music with their country humor, telling corny jokes much like they do on their live LP ("where I grew up, the only thing to do was to sit around and poke ants with a stick."). The country humor and bluegrass somehow mixed very well, and the Dillard's showed that they could not only play music, but amuse the audience as well.

The members of the band are all from the Ozark Mountains region of Missouri. Rodney Dillard is the lead vocal and guitar player (and also tells most of the jokes). Dean Webb does an incredible job on the electric mandolin, which he sometimes uses to play parts which could also be played by a fiddle. Paul York drums and Irv Dugan, the road manager, plays the bass. Irv seems to be the only one who doesn't look like he came from a small hick town. And Billy Ray Latham does some fine pickin' on the five-string electric banjo, which is so essential to the bluegrass sound. He also picks up the steel guitar for a few pieces. I think Billy Ray chewed the same piece of gum the entire night.



The style of the Dillard's is typical bluegrass, which they play exceptionally well. It is obvious that they have been together for a very long time and are together on every number. In much of the performance, the mandolin and banjo seem to do "battle" for superiority, adding to the quality of the music. Most of the material they play is original, but they occasionally mix in some old traditional bluegrass. They even did a Beatles song, "I've Just Seen a Face" (from "Rubber Soul"), totally in a bluegrass style, of course.

The Dillard's played a few tunes from their latest album, "Roots and Branches." The crowd especially liked the title track. From the "Tribute to the American Duck" LP, they played "Hot Rod Banjo," a song written about Billy Ray's banjo playing. They end with the traditional "Somebody Touched Me," while the audience clapped and sang along with the chorus. This left the crowd so pleased that many stayed for the second show.

I felt that the concert had been very enjoyable, and that the Dillard's put on a great show for those who are into bluegrass. By the end of the night, however, I almost had the feeling of being "bluegrass-ed to death," perhaps because I like other forms of music which are less confining.

# The Temps

by Wayne Gardner

Temptation With Kool and the Gang at Valley Forge Music Fair Wayne Gardner

How the Temptations managed to stay on top all these years did amaze me. Tuesday I found out how. They're sure entertainment. No spoiled brats here, these guys love to sing, to dance, to entertain. They're damn good at it too.

The Temptations are now Richard Street, Glenn Leonard, Dennis Edwards, Otis Williams and big bass Melvin Franklin. It's a very efficient machine. Their act is polished to the bone. You never get the impression that it's just the same old routine. It seemed almost like a special set.

The Temptations have a new gold LP. It more or less states why they're big time. It's consistent with the Temps we've known and loved for years yet it's as contemporary as today. Their act is the same. They opened the show with "Glass House," into a cut from the next LP, through a medley of the last ten years, some soft love songs for the lovers, back to today with "Shakey Ground." All the while carassing as much participation from the audience as possible. They love being center-stage.

The Temps will be at Valley Forge through Sun. (two shows nightly). Opening the show is super-bogie, Kool and The Gang. The "Gang" was into some sophisticated funk. Just enough to keep you wiggling in your chair, and not in the aisles.

Kool and the Gang showed me they do merit top billing. They're a really tight group. With the addition of Something Sweet, a female backup, they've become the all purpose band. They can do anything from boogie to soft rock, to interpretive jazz to fancy harmony. They're ready.



# Frampton Shines On

concert review by Ray Penkola

College concerts definitely have a special appeal all of their own. Especially if you happen to be paying tuition there, it's a good time to head on down to campus and enjoy some fine music with familiar faces. It also offers the unusual opportunity to catch up on some "kulchure" in a setting which may seem more like sacred ground for nothing but the old mind grind (with an occasional sports event or two thrown in).

Last Sunday evening I ventured out of Philly's entertainment domain to catch what turned out to be an exceptional musical experience starring guitar virtuoso and a most moving performer, Peter Frampton, at Glassboro's State College in N. J. Frampton has been in Philly a number of times, but unfortunately always ending up in the Spectrum receiving second or third billing. Instead of a usual hour set (or less) which his Philly appearances have allowed, Frampton was given complete control to display the full range of his dynamic musical abilities, entertaining the audience for over two hours with his unique style of appealing English rock.

Material from each of his four solo albums were well represented with songs like "All I Want To Be," "Do You Fear Like We Do," and "Somethin's Happening" pleasing the audience to no end. Also included was one of his latest "singles," "Show Me the Way," on which Pete uses his curiously odd-sounding voice box. But as he humorously hinted, he is not the typical "singles-oriented" artist, having risen far about that level. The smaller concert setting and top billing also afforded Frampton the chance to include a refreshing acoustic section in his act, drawing the crowd and performer much closer.

Peter Frampton, originally from an early English band called Herd, joined forces with small face, Steve Marriott, to form Humble Pie late in 1968. But as the band's prevailing tastes grew more and more narrow, Frampton took off for greener pastures on his own where he could develop his varied musical interests. What sets Pete apart from all the other rockers is his uncanny ability to fuse together rock and roll sounds in a manner that can be both soothing and energizing, composed around his identifiable introspective views. Toward the end of the show the entire audience was on their feet singing and clapping in harmony without the slightest prompting from the band. Frampton's music speaks for itself.

Opening the show, after a few delayed sound checks, was the reformed group of Mott. (They've dropped "the Hoople".) Their new-found sound is quite unlike the original Mott's, with their approach being more straight forward and simple. Bassist Overend Watts has taken control (more or less), but proved to be a weak vocalist on stage. Nigel Benjamin, from an obscure English outfit called Royce, handles most of the lead vocals. Too bad though, because on most of the group's new material from their LP, "Drive On," he sounded too much like another high-pitched screamer. On lead guitar now is Ray Major, resembling Jeff Beck somewhat in appearance and stage stances. And poor Morgan Fischer-his keyboards were hardly ever heard through the band's heavy barrage of amplified audio assaults. They did serve as a good warm-up act, though, with their relentless style of rock and roll helping to bring up the temperature a bit in the gym.

And as far as gyms go for concert use, Glassboro's turned out to be a most rewarding place indeed, with the acoustics hardly being hampered to any great extent. A few well-promising shows are also lined up for the near future with controversial entertainer Dick Gregory on Nov. 15, the National Lampon Show, Dec. 7, and a most unsuspected, but nevertheless true (we hope), appearance of the outrageous music-comedy group, The Tubes, on Nov. 19.

Drexel University  
March 20-27, 1976

Caribbean  
7 day luxury cruise  
on the

MS Bohème \$499\*

San Juan • Cap Haitien • St. Thomas • Puerto Plata

### ALL INCLUSIVE FEATURES

Round Trip Jet From Philadelphia to Miami via Eastern Airlines to stop over in Miami Beach, Tampa or Orlando, and Walt Disney World, with open return option.

All air conditioned staterooms with private bath

Roundtrip transfers between Miami airport and Ship

All meals on ship including a delectable daily breakfast, hearty and delicious lunch, multi-course epicurean dinner, lavish midnight buffet plus in-between snacks.

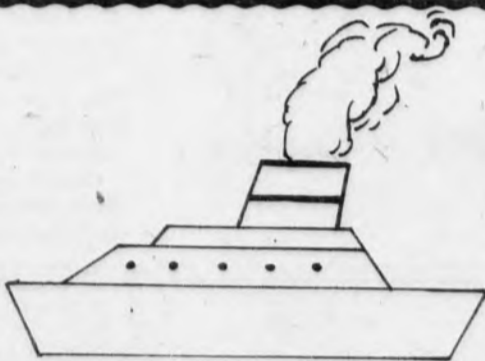
All entertainment on ship including swimming, sports, games, movies dancing, music, and nightly international shows.

All passengers must pay \$9.50 port taxes  
\*Based on quad bunking

\$100 deposit due  
Dec. 5, 1975

From \$589 based on two to a  
State room, lower beds

\$200 payment due  
Jan. 5, 1976  
Balance due  
Feb. 5, 1976



**WHAT A LINE-UP!**

**MOTION DISCO**  
Every Fri., Sat.  
& Sun. Night  
Cheltenham Shpg. Ctr.  
Cheltenham, 887-2312

**ROMA**  
Mon.-Sat.

Rte. 202 and Warner Rd.  
King of Prussia, 265-4303

**deep end**  
at **Steak & Brew**

# The Change of the Century Orchestra at the Foxhole Cafe

by Wayne Gardner

Last week we gave you a review of Sunny Murray and the Untouchable Factor. It was kind of confused. I must admit, I had a few problems trying to describe this "new music." Last Saturday at the Foxhole there was a full concert of this new music and I can give it a real review this time.

Ever have a professor who was so engrossed in his discipline that he only looked at the world through those eyes. You know what I'm talking about, right? There is a growing rank of musicians who see the world only as music. They are true artists-dedicated, diligent and sincere.

I can't speak on the newness of this sound. It did in fact remind me of sounds I've heard somewhere before. But I guess you can't do analytical geometry without thinking about the arithmetic either. The "Change Of the Century" is an externally loose, spiritually tight sixteen piece orchestra organized somewhat like the old Big Bands, the allows fresh, new talent the opportunity to display their artistry. The group is led by Byard Lancaster, Sunny Murray and Khan Jamal, a few names that you might not be familiar with, but you didn't know Bruce Springsteen until somebody told you. The orchestra is arranged around the musicians, for the musicians, by the musicians. The end result being-pure intellectual stimulation for the ear.

Now don't get me wrong, this ain't the stuff for eggheads. There were no on-going debates about lyrical phrases and the rest of that smack. It is entertainment too. I saw enough heads bobbing and feet tapping to be assured of that. What I mean is, there's been an over-saturation of the disco-funky-dance music throughout the industry. Music to listen to had almost gone out of style.

The concert had been labeled, as the beginning of a new era in music. Yeah, you know all about those new eras too. It usually boils down to just another promotional gimmick to get you there. I feel, right now, that I've



been a part of a real happening. I'm not ashamed to be associated with it, it's definitely a feasible solution to the sometimes blatantly mediocre talent we get through here too often at such ridiculous prices. And it's about time too, everyone's getting good ideas for the bi-centennial.

Anyway, let's talk about the concert. It opened up under some rather niche circumstances. Absolutely no acoustics, a packed house with late-comers rambling around for non-existent seats, just enough distractions to make you want to leave. Sax and flute man Byard went out front conducting, then led us through three Sunny Murray compositions--"Japan," "China," and "Hawaii." Selections to appease the mind's eye, taking us on scenic excursions through the Far East. The cuts lost some of their flavor because of those rambling souls who just couldn't sit down.

After that little trip, things did become a bit more settled and Byard led us through his "Change of the Century." This is good, free music at its best. It allowed the various artists to display their knowledge and ability. I'd like to specifically mention electric bassist Steve Greene, trombonist Gracham Monchur, III, and the good brothers on percussions whose names I didn't get.

Much to my surprise the orchestra jumped into a progressive traditional bag. It was too much. The orchestra jammed "Bag's Groove" in a manner that would have brought smiles to even Miles and "Bags" himself (Milt Jackson). To make sure we didn't forget, the group also went through John Coltrane's "My Favorite Thing." Again each artist took the time to show off a little with Byard just letting everything flow free and easy but never loose.

This concept was indeed a pleasureable-experience. My only hope is that we do not allow it to die. As mentioned, it is a welcome alternative from shoo-bop-shoo-do. But even more, it can be a critical springboard for Philly's promising talent. Like I said, it's a real happening.

Other performers were Philly Joe Jones, Middy Middleton, Monette Sudler, Warren Carter, George Lockhart, Ed Crockett, Bill Lewis, Keno Speller, Heath Allen, David Murray, Robin Eubanks, and the only non-Philadelphian, Danielle Rousseau. Let's pray that they make it here again, real soon.

# TLA and its' Films

by Harriet Cohen

The TLA Cinema, one of Philadelphia's premiere film theatres, has always featured films that have been different, always provocative, and sometimes tasteful. Their reputation is well deserved, judging by the exciting Fall schedule, a successor to TLA 101 Nights. A look at their Fall Review reveals some real treasures ("Space Odyssey," and "Scenes From a Marriage") and some sleepers ("Jimi Hendrix," and "Phantom of Liberty").

Everyone has a candidate for their best film ever seen and I am no different. A film that I have always enjoyed and remember was featured at the TLA last week. Federico Fellini's hilarious boyhood memories, "Amarcord" possesses less of a visual impact, as compared to "Roma" or "Satiricon," known for their grandiose and stimulating themes. The film's messages filter through to the audience much like light passing through a camera shutter, as one hilarious incident after another is retold. The action takes place in the small Italian town of Rimini, caught up in the whirlwinds of Mussolini's Facist Italy. Some scenes are tragic, but others unfold with enormously comic overtones.

The Philadelphia first run showing, "The Invitation," by film maker Claude Goretta depicts the French Bourgeoise with a scathing view. The imbalance between workers, by way of class, personality, and outlook on life clashes on a Sunday outing in the country. It is a highly witty film marked by brilliant characterizations. Both "Amarcord," and "The Invitation" used subtitles instead of the usual dubbing.

Last but not least, Philadelphia audiences will once again be grossed out by Divine. Yes, John Walters presents Divine, plus friends in: "Female Troubles." Needless to say, the film has an X rating, which to borrow a quote, "cannot begin to describe the scenes of extraordinary perversity, and moral and sexual offensiveness..."



DRAFT BEER

# Garcia Overtakes The Audience From The Start

by Alan Brody

On Friday night, two consecutive shows took place at the Tower theatre. The billing was Jerry Garcia, of the Grateful Dead, and his band.

Before Garcia performed, the Paxton Brothers sang, or at least tried to. During one of their songs a figure was noticed walking back stage. Someone yelled out "Garcia" and everyone went wild. They started to sing regardless of whether everyone was seated or not. The majority of the people came in the midst of their performance. Some of their songs brought out a good response from the audience. "Oh Mr. Grasshopper" was among the list. It was about a grasshopper eating someone's plants. What kind? Figure that one out. Though the duet on voices and guitars were harmonized, everyone's heart and thoughts were into Garcia and his band.

The Paxton Brothers received a nice round of applause, though it was incomparable to the following act. When they took leave of the stage, songs were played over the loud speaker. After each song, the noise level took its peak, but no Garcia. A half hour rolled by slowly, and finally Garcia walked onto the stage with the rest of the band. A standing ovation was given before the first number. Some people stood after each song to show their enthusiasm. Others stood during the whole concert.



All in all, a tremendously excellent concert was given. Garcia showed a great quality in his voice and guitar work. The selected songs were good in choice. Nicky Hopkins, the pianist, played a solo entitled "Lady Sleeps." This song ran into "No Time." He also sang and was liked by some, but others thought his piano playing distracted from Garcia.

Among "The Russian Lullaby" and "Friend of the Devil," a Dylan song was sung--"You Got a Lot of Nerve." Garcia also sang "How Sweet It Is" which got everybody, and I mean everybody, onto their feet. By "The Night They Drove Old Dixie Down," most of the thick smoke cleared inside. Their last number was "Let's Spend the Night Together." They jammed for a good deal of time during this song. The audience knew it was the last song. It was pretty long and too good to be true.

Garcia stretched out each song and made it sound perfect. His voice portrayed a flawless sound. His guitar playing was expressed heavily on the slow blues side.

Among the Grateful Dead and New Riders' shirts and jackets, there are some strange looking people walking around. I thought I saw Groucho Marx, a couple monsters, Fred Astaire...of course, it was Halloween.

# Music at Van Renssalaer Hall

by Steve McMahon

Tuesday nights are special in the Living Room of Van Renssalaer Hall, for that's the time the pickin' and grinnin' begins at the Coffee Break. From 9:30 until about 12 the Living Room's filled with the strains of banjo and guitar, folk songs, and Drexel students sipping coffee and tea, and munching on donuts.

Funded by House Council, the Coffee Break is open to Drexel residents and their guests. Each week different groups play all types of music, original, folk, folk rock

and jazz for an audience which can relax and listen or eve sing along.

Admission to the Coffee Break is free as are the liquid refreshments. Donuts generally cost from 10-15c. Anyone can come and play and student participation is encouraged.

Those interested in performing should contact Mary Lodge, Resident Director of Van Ren. Everyone is invited, so come to relax Tuesday night with music and refreshment, at the Coffee Break at Van Ren.

# MAD GREEK PIZZA PARLOR

Monday-Saturday 11 A.M.-10P.M.

Delicious Homemade Pizza,  
Fresh Dough Every Day!

- Giant Hoagies - Sandwiches  
- Steaks - All Beef Hamburgers

We also have cigarettes & newspapers  
Sodas-All flavors and sizes

**NO BETTER FOOD AT ANY PRICE,  
ANYWHERE**

Large cheese pizza	\$2.75	Large hoagies	\$1.20
Large cheese pepperoni	\$3.35	Large steak	\$1.20
Large cheese sausage	\$3.35	Pepper steak	\$1.30
Large cheese mushroom	\$3.35	Pizza steak	\$1.35
Large cheese beef	\$3.35	Tuna hoagie	\$1.00
everything on	\$4.85	Hot Sausage	.85
Slice	.45		

Call in order for fast pick-up service

3513 LANCASTER AVENUE 222-2739

# GODSPELL



MON. NOV. 24 thru SUN. DEC. 7 • TWO WEEKS!!

Mon., Tues., Wed., Thurs (8:30 p.m.) Sun (7:30 p.m.) \$6.00, 5.00, 4.00, Fri. (8:30 p.m.) \$7.00, 6.00, 5.00, Sat. (6:00 & 9:45 p.m.) \$7.50, 6.50, 5.50  
NO PERFS \*Wed Nov 26, 1975; \*Mon Dec 1, 1975; \*Sun Eve Dec 7, 1975  
MATINEES Sun Nov 30 & Sun Dec 7 (3:00 p.m.) \$5.00, 4.00, 3.00  
ADDED PERF \*\*Wed Dec 3 (3:00 p.m.) \$5.00, 4.00, 3.00

**SPECIAL STUDENT COUPON**

TOP PRICE SEATS: \$3.50 (with this coupon)

Offer applies to Tues., Wed., Thurs., & Sun. Nite Only!

THIS COUPON WILL BE ACCEPTED AT  
BOX OFFICE ONLY!

**Valley Forge**  
Music Fair

THIS OFFER DOES NOT GUARANTEE SEATS  
RT 202, DEVON, PA. ONLY 26 MINUTES FROM DOWNTOWN PHILA.

## Morningsong: Old Sounds Made New

by Denise Zaccagnino

Some mellow listening can be found on this album by a talented new group called Morningsong.

The songs themselves are not so remarkable. They sound the thoughts and feelings of the people of today - the way that many other musical groups have tried. So perhaps the most remarkable thing about this album is the fact that the music is so good. The lyrics are not earthshaking, but they are solid. The music is nowhere short of excellent; the group obviously has an overabundance of talent, as they wrote the lyrics and arranged the music for all of the songs on the album.

And then there is their sound. Every once in a while, a group comes along that creates a new sound. Such groups are very rare. They happen perhaps once every ten years. Morningsong has not created a new sound. It has done something just as difficult: they have revitalized some of the old sounds.

The best aspect of this group is their versatility. They are a soft rock/folk group that has put some new pizzazz into the sounds of Cat Stevens, John Denver, and a few others. They take the best aspects of these performers and add some of their own, and come up with a really beautiful sound.

One of the best songs on the album is "You Try". It's soft and lyrical sound comes from the arrangement of the flutes, clarinet, and strings. The song offers lyrics like: "There's gray walls and haze around you/Rainbows overhead/Shadows of doubt surround you/You might laugh instead." Terry Sweet, a member of the band, wrote the words and arranged the strings in conjunction with Richard Kozak, also a member of the band.

"Never Bending Ears" offers some great guitar pics that are slight reminiscent of Denver. The

song is dedicated "Written for thousands, that they might never be forgotten." It talks about those who came and went with the Viet Nam war, and the way things were "back then." "He didn't want no silly wars/ Didn't want to play the games/Of over-righteous politics/And where to shove the blame/He was caught up in the numbers/By the system's grinding gears/And his pleas for help were quickly lost/ To never bending ears."

The last song on the first side is called simply, "Blues", and it offers some great foot-stomping music in the real hillbilly tradition. There is some mean fiddle, guitar and hand-clapping that makes the song have that great jug band sound.

On the flip side is "Love of a Friend", which is very strongly reminiscent of Cat Stevens. The lead vocalist has the same quality of voice that got Cat Stevens his following. "The time that I have known you/Is so short but so sweet/Seldom can this feeling/tween people who meet/Stay the passions of lovers/That can so tightly bind/For the love of a friend/Is anything but blind." The song features some great guitar arrangements and a great vocal job by the lead singer.

Interspersed between the songs are some short musical interludes that are strongly reminiscent of some of Bach's chamber music. They break up the album and offer the listener a gleaming of what the group can do. They have great possibility.

The versatility, the vocals, and the arrangements on the album indicate that Morningsong is bound to be one of the new super groups of the seventies. Their talent is so great and so obvious that they're sure to reach the pinnacle of the rock world - the cover of the Rolling Stone and lots of money!

As I was walking through Central Park, who should I meet but my old friend Jim Bright. Jim was one of the wealthiest people in New York City until it went bankrupt. He was a welfare recipient. We exchanged greetings and then Jim said, "I know how to get New York City out of financial difficulties." This is what he said:

The civil service have been working without getting paid for three months. The United States should look at their 13th amendment. This bans slavery and slavery is what is running New York City's workers. New York should be told to start paying its citizens, but since it can't they will be thrown out of the United States and then attacked.

Pres. Ford took the gum out of his mouth and paced the floor. As he tossed the football in his hand he exclaimed: "Damn those New Yorkers. Don't they know how to fight fair?"

The Pentagon advisors looked at their commander-in-chief. He was wearing a football jersey and shoulder pads but no helmet-he was dressed for war.

"How can Pres. Beam do that to us? How can we fight a clean war with stunts like that?," continued the mayor.

General Quickmouth got up. "Pres., today we lost another five thousand men in the Bronx. We just can't get past their first line of defense of garbage. Every time we try, the smell kills some of our men. We tried gas masks, but then they released the pigeons who mess up the windows for our eyes."

General Hotair then stood up. "Mr. Pres. our ranks tried going down Wall Street but people from the windows dropped New York City bonds on us and you know how hard they drop. We lost 1,000 tanks."

Lastly General Black got up. He cleared his throat and then sat down. He was not about to tell the others that his water attack failed because his boats got stuck in the oil spills.

President Ford sat down finally. His eyes lit up and he reached for the phone. He lifted the receiver and said "Testing, Testing 1, 2, 3."

General Quickmouth said, "Sir, what are you doing?"

Fore replied "I'm testing to see if there are any bugs left in it. You know the last man here had to call in a special exterminator." The Pres. spoke into the phone and then hung up. He turned to the waiting men, cleared his throat and said, "I have sent for the secret weapon."

## New York: Who's de fault

by Fred Baker

A knock came on the door. "The secret weapon is here Sir."

"Have it come in."

In walked Henry, the secret weapon, Kissinger. "Jerry," he said, "I hear something important is up, are you going to ask me to be your running mate in '76?"

"No, please sit down. I have an urgent problem to discuss. We are fighting New York City you know, and are only winning because of sheer numbers. All over the country there is unrest - I haven't been to sleep with Betty in over a week."

"My, you do have a problem Jerry," said Henry, "What are you fighting about?"

"The issue of slavery."

"No, not the U.S. and New York City but you and Betty, was it another woman?" said Henry Kissinger.

"No, I've just been too busy-but can you go to New York and make a peace with Honor?"

"Sure," said Kissinger "Haven't I done it before?"

The next day Henry Kissinger came back to Washington. In his hand was a peace agreement. It said-We surrender to the U. S. with the agreement that they will help rebuild us.

The President looked at his friend and said, "Did you have to agree to give them money? You know I wanted to cut the taxes, why didn't you offer to make them a state again?"

Henry said, "I did, but they wouldn't fall for that trick. They know you only help out foreign nations. Pres. Beam has applied for admission to the United Nations and has threatened if not accepted to kick them out of his country."

"Okay Henry, New York City will get 700 million dollars and we'll sponsor them into the U.N. and now I want to go to bed."

The President put the gum back in his mouth and began to walk, but stumbled, "Damn the gum," he exclaimed, as he yanked it out of his mouth. As he turned the light out in the Oval Office he screamed "Betty, here I come ready or not."

## Female Trouble

by Maureen Waters

Female Trouble, John Water's newest and hopefully last creation starts an 11 day engagement this week at TLA Cinema. For those who have never found obscenity particularly amusing, it is a waste of the admission price. Vulgarity is Water's forte and the sole goal of his film is to explore the problems of the gross and mentally adherent leading lady, Dawn Davenport, played by Devine. The star of Pink Flamingoes is again splendidly cast as a kinky overweight teenager who matures into the most despicable criminal in America.

The tale opens when Dawn is in high school. Incensed at not receiving cha-cha heels from her parents at Christmas she stomps the other presents flat and knocks the Christmas tree on her mother. Hitchhiking away from home she is picked up by a fat, repulsive man who balls her with great gusto and innumerable snorts and grunts on a mattress in a roadside trash heap; A shop of Devine's expansive thighs wrapped around the poop-stained behind of her slovenly mate exemplifies the impression John Waters labored to create. If this is the type thing you enjoy, rejoice, it is only the beginning.

As a result of her Christmas morn activities Divine has a daughter Taffy, who she whips with a television antenna and chains to a bed for reciting repetitious jumping rope chants. For Taffy, nothing can match the enjoyment of playing "car accident". With broken glass and a catsup jar she is able to gleefully ineact all the frightful excitement of being mutilated and murdered.

The cast of Female Trouble each try to outdo each other at deviancy. Later, Dawn's husband gets a weird thrill sticking a carrot in her mouth at orgasm and his Aunt Ida, another veteran from Pink Flamingoes is intent on fixing him up with a nice fag.

As the movie progresses, Dawn becomes the model for an incredible couple who believe "beauty and creme are one." This is the beginning of the end for Dawn Davenport whose criminal activities such as chopping off Aunt Ida's hand and the bludgeoning of her daughter Taffy are captured in picture.

It is an obvious truth that high standards are difficult to maintain, however Female Trouble proves the less well known fact that maintaining poor standards can be even harder. Shock value holds a place of importance in this strange genre, and was the semi-redeeming feature of Pink Flamingoes. Female Trouble doesn't have the impact of Water's earlier work though, the antics of this motley crew soon become boring and the tale drags on to a grossly disappointing conclusion.

## SHARE THE RIDE WITH US THIS THANKSGIVING AND GET ON TO A GOOD THING.

Us means Greyhound, and a lot of students who are already on to a good thing. You leave when you like. Travel comfortably. Arrive refreshed and on time. You'll save money, too. But you already know that. So share the ride with us on weekends. Holidays. Anytime. Go Greyhound.

**Greyhound announces  
The All-American Ameripass.\***

**7** days of unlimited travel for **\$76**

You're due for a big holiday break, and you've got it. 7 days unlimited travel in America and Canada, for \$76! Now you can go home for the holidays and enjoy a great travel adventure too, before or after. The All-American Ameripass gives you special discounts on hotels, meals, sightseeing. Only Greyhound serves 48 states. Ask about it now.  
\*Good thru December 15, 1975.

**Jerry Stadd  
243-9968**



**Greyhound.**  
More than ever, we're in touch with America.



**Dr. Watson's University City**

39th & Sansom Sts. Phila. Pa. / EV6-1333

11-2\*\* Sat.\* Sun. weekend

**\* BRUNCH \***

**\$2.25**  
all you can eat! ..... 11am to 2pm !!!

The most famous weekend brunch on campus

.....eggs!.....hotcakes!..

Your choice or... Take 'Em All !!!

Eggs any style, sausage, bacon, ham, potatoes, heavenly light hotcakes, Apples \* Cherries, Blueberries \* Olde Time MAPLE Syrup!

De Olde English Pub ... Open 11-2 daily

**EXCLUSIVE...  
... LADIES SIZES NOW**

**HERMAN SURVIVOR** Insulated to 2" Below

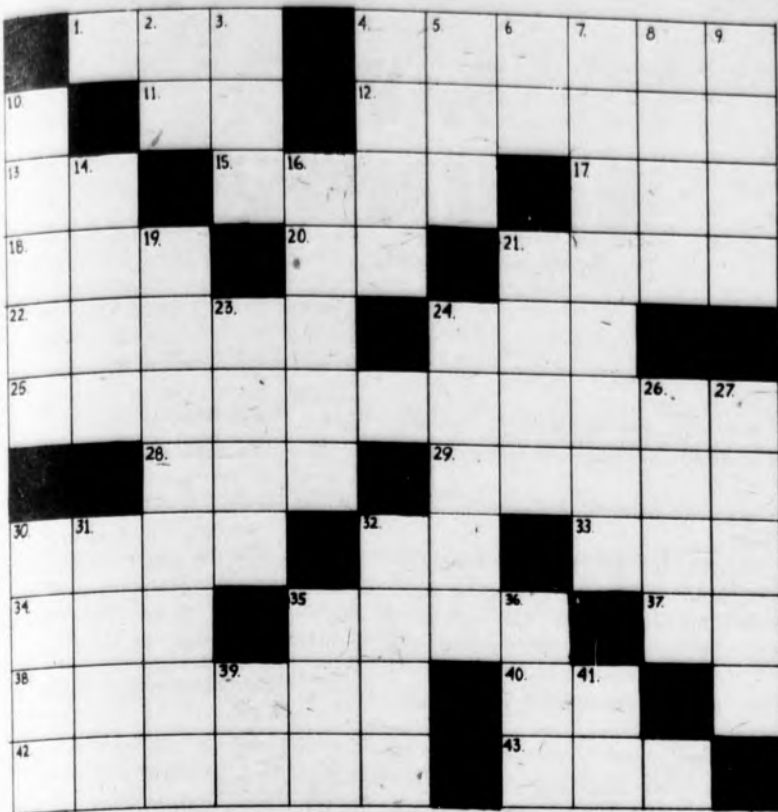
- 8" green pebble grain leather
- genuine Vibram sole
- oil tanned rawhide upper
- MENS SIZES 6 to 14
- LADIES SIZES 5 to 10

**\$54.95**  
over size 12 extra

- 8" Rustel BRN. Leather
- Neoprene oil resistant sole
- MENS SIZES 6 to 14
- LADIES SIZES 5 to 10

**\$43.95**  
over size 12 extra

**i. Goldberg**  
902 Chestnut • WA 5-9393



# Clues

# Finally, A Win

## ACROSS

1. Article
4. Beginning
11. Early
12. Area of the genitals on humans
13. Acronym for Loyola University
15. Acronym for ground control heuristic navigation
17. This man is claimed to have powers of psychokinesis (backwards)
18. Noun suffix
20. An artificial language
21. Unit of mass
22. Tom Tryon novel (backwards)
24. Symbol of female intelligence and perseverance.
25. Opera by Scott Joplin
28. Raw metal
29. Noun suffix
30. Vigorous
32. Italian river
33. Gar or baro
34. Boxer
35. Ad or ac
37. Regard
38. Belvedere
40. Division of the psyche, according to Freud
42. Covers the ocular organ
43. Feast of Lanterns

## DOWN

2. Acronym for Howard University
3. Unit of energy
4. Eight in Mexico
5. Vase
6. Japanese volume measure
7. Type of wrench
8. Grayish yellow-brown
9. Hoodlum
10. Coquet
14. Person hooked on heroin
16. Huxley novel, " - Yellow"
19. Hypothesize
21. Hot Lips on M\*A\*S\*H
23. Flat or mys
24. Member of the lily family
26. One who shouts an alarm
27. Member of the compositae family
30. Wise person
31. Recreation
32. Agitate
35. Japanese sash
36. Blood relation
39. Overhead railway
41. Tone of the diatonic scale

As you may recall, I plainly stated that our field hockey team would surprise us. I deliberately failed to explain the surprise, because surprises are unpredictable. Well, hold your breath and buckle your seat belts! We're all in for a whallop of a surprise.

Oct. 30, 1975, at Drexel's Athletic Field, our ever so tough and aggressive field hockey team graduated from fantastic to super0incredible-fantastic! These lovely and charming girls battled the hallowing whistling winds of Jack Frost and Beaver College. Ladies and gentlemen, these charming girls defeated Beaver College one goal to zero. Allow me to repeat the previous statement. Friends! Countrymen! Lend me your ears! Our field hockey team has put it all together and become victors! They have proven that they are able to strive and struggle through defeat, hand tough and produce a win with honor! Their very first win accompanied with a shut-out! That is a very enthusiastic and just plain super accomplishment. A shut-out included with a win! Gee! Don't you feel absolutely proud about our field hockey team. Gulp! Don't tears come to your eyes from happiness and joy! Girls! Don't you want to stand up and cheer until your tonsils declare your throat a disaster area! Well, let's do it! Our field hockey team is the greatest!

The first half was strictly defense. Each team came very close to scoring, but the goalies did their job of constantly repelling shots. One of Drexel's players, Connie Cheeman, got smashed by a rifling shot to her left ankle in the first half. However, she refused to sit down and call it quits! I do believe her fellow teammates were saying in their minds, "Gee! She must want to win awfully bad! Well, I do to! Sp... Beaver look out, because I'm going to sock-it-to you!"

In the second half, the game really accelerated with excitement. Shots were missing the goal by inches, bodies were falling all over the place, referees were making hairline or controversial calls. It was a real treat to watch! Then, halfway through the second half, Drexel started toward Beaver's goal with a power sweep. It seemed the ball never touched a Beaver stick while it was in progress. Drexel maintained the ball extremely deep in Beaver's territory. The ball was no more than 10 yards from Beaver's goal. Desperately, Beaver's bench screamed for Beaver to get the ball out of their zone. On the otherhand, Drexel's bench yelled with cheers of encouragement to put it in there. Against the howling and bitter winds, the battling sticks sounded like clams clapping vigorously. Suddenly, quicker than Steve Austin of the Six Million Dollar Man, Ruthie Smith fired a real shot by Beavers goalie on her left side. Drexel had the lead, 1 goal to zero. Drexel's bench exploded into beserkness as the players on the field raised their sticks above their heads in joy! For the remainder of the game, it was strictly defense and aggressiveness.

It seems goalies have a routine duty, That is, to repel shots. However, it's the quickness, alertness, and darn good super efforts that distinguished a great goalie. I can proudly say, in the defeat of Beaver College with a shut-out, Barbara Filemyr did an absolved superb job. Hey! The next time you see her on campus, smile and give her a cheer. She really deserves it!

The line up in which we should all remember that supplied us with a win were: Patty Maher - co-captain; Debbie Lindsey, co-captain; Barbara Filemyr, Stephanie Haem, Ruthie Smith, Maria Salvitti, Amie Cohen, Teresa Varesse, Elvlyn Hirst, Ann Serpentino, Roseanne Gunn, Nora Gruber, Connie Cheesemean, and Coach Hass. A great bunch of charming young girls! Sure, it's only one win near the end of the season, but our field hockey team has beautifully blossomed into a new frontier. This frontier is winning.

# Sci-Fi Review

Warlord's World by Christopher Anvil. DAW Books, Inc.; 207 pages, paperback, \$1.25.

For the fanciers of sword and sorcery, here's something that's better than sword. Warlord's World is the modern sci-fi aficionado's answer to Edgar Rice Burrough's John Carter, Warlords of Mars.

The book opens with a routine mission to the gambler's paradise, the planet Tiamaz. Vaughn Roberts, captain of the small Interstellar Patrol ship IPS 6-107-J, and his crew are on a short stop over on Tiamaz. While going to his favorite local bar, Roberts comes eye to eye with the beautiful Princess Erena, who is being abducted by a shady faction that is trying to keep her brother from ascending the throne of Festhold. Instantly falling in love with her, Roberts immediately does the natural thing, that is, free her from her captures. And the fun begins.

This book is great fun, offers some really exciting action, and a look at chivalry's return in the far distant future of galactic empires and interplanetary princesses. The plot reminds the reader of a game of chess on the galactic level, with the Interstellar Patrol and the powerful Gambler's faction playing for keeps, for a lot of money, for the Princess Erena's life, and for the throne of Festhold.

The author, Christopher Anvil, is a late comer to the scene of sci-fi, but one that is sure to make a big splash. His last book, Pandora's Planet was a huge success, as this one is sure to be. Read it for the pure fun of seeing knight errantry carried into the galactic level.

The Tower's of Utopia by Mack Reynolds. Bantam Books; paperback, 201 pages, \$1.50.

Mack Reynolds, a fairly well established name in the field of sci-fi, has come up with another novel, this time dealing with a world that is far from utopian, in a utopian future that is far too plausible.

In a world of the future, where society is automated to the point where there is no actual money, no actual cities, and no actual jobs, an economic system that is supported by Negative Income Tax is being attacked from within by an insidious enemy. The enemy is insidious because it cannot be seen, commits crimes that are seemingly profitless and motiveless, and generally turns the nice secure world of the future topsy-turvy in a rampage of guerilla attacks. The security forces of the day do not know if they are fighting one man or an army, because it cannot be seen on the scanners, the hidden peeping tom devices or any of the other sophisticated surveillance systems that are virtually everywhere in this modern, technological, and automated society.

Not since Harlan Ellison's "Ticktock Man" has there been a work of sci-fi that is so compelling that the reader must sit back and say "Is this where our world is going?" Reynolds has written a superbly constructed novel that is both entertaining and offers some really good insight into the works of the human mind and the systems that the human mind can create.

Mack Reynolds' may seem, superficially, to be very similar to several other utopia plot sci-fi novels of the recent past. But Reynolds has come up with an angle that is completely fresh and original. It is both frightening and amusing, and well worth reading. So find out what our future will be; read this book.

VOTED NO. 1 By The Philadelphia Magazine

## FONZO'S ITALIAN VILLAGE

One complimentary dinner with each dinner served

Choice of Tomato Juice, Chef Salad  
Fruit Cup, and Soup Du Jour

- Spaghetti and Meatballs ..... \$5.10
- Baked Lasagna ..... \$5.60
- \*Egg Plant Parmageana ..... \$5.80\*
- \*Broiled Chopped Sirloin Steak ..... \$6.10\*
- \*Choice of 2 Vegetables or Spaghetti\*

Desert: Sherbert, Ice Cream Cake Roll, or Jello  
Beverage: Soda, Coffee, Tea - Milk 15¢ Extra

**48th & CHESTNUT GR 2-9930**

LOWEST PRICE DINNER IS FREE

I.D. MUST BE SHOWN

COLLEGE STUDENTS ONLY NO CREDIT CARDS

## UNIVERSITY SPECIAL

**30% OFF A FONZO PIZZA**

WHEN SERVED OR PICKED UP AT FONZO'S  
Dining or Take Out SH8-2147 or GR2-9930

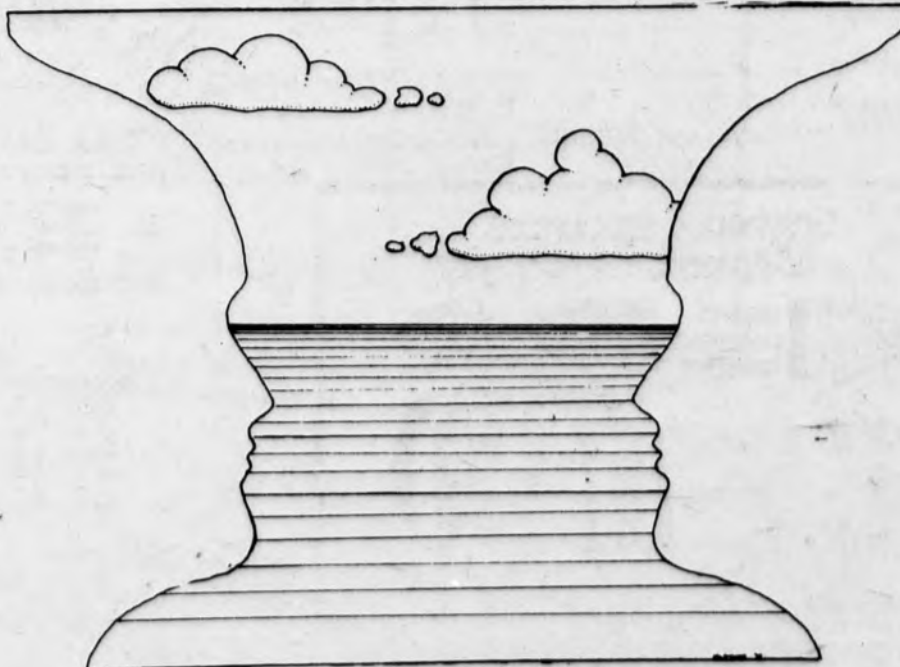
FREE DELIVERY (no discount)

DREXEL PLAYERS PRESENT

# SOLITAIRE

# DOUBLE SOLITAIRE

by Robert Anderson



MANDELL THEATER 33rd & Chestnut St.

Performances Nov. 20 7:30 PM . Nov. 21 and 22 8:30 PM

Box Office open weekdays noon to 5 PM 895 2529

General Admission \$2.50 Students \$1

Faculty - Staff \$2



# X-Country Ends Regular Season

Drexel's cross-country team provided some good news and some bad news this week. First the bad news, they lost a triangular meet to St. Joe's and West Chester. The good news, they beat Haverford. In the St. Joe's, West Chester meet it was Steve Shaklee turning in another personal best, transverseing the hilly Fairmount Park course on 27:43. Unfortunately W.C. had already crossed 5 men, shutting out the Dragons. The Hawks also had a man over before Steve finished. St. Joe's got another man across before Kevin Hilyard finished at 28:11, another Hawk, then Joe D'Ambre at 28:39. St. Joe's brought in the next 2 men, then Tim Lauffer and Jim De Frahn finished, ending the two contests: St. Joe's 24-Drexel 31 West Chester 15-Drexel 48.

Then on Saturday the Harriers traveled to Haverford and did a bit better. Kevin Hilyard led all runners covering the 5 mile course in 26:04. Haverford contested at first as their Jeff Kehne came in at 26:11, followed by Drexel's De Frahn and Haverford's Gary Romzowsky and Rich Minute finished to cap a 22-38 victory. This brought the team's final regular season record to 4-7. The team will participate in tomorrow's ECC Championship meet at Belmont Pla team.

**TRIANGLE ADS  
CALL 222-0800**

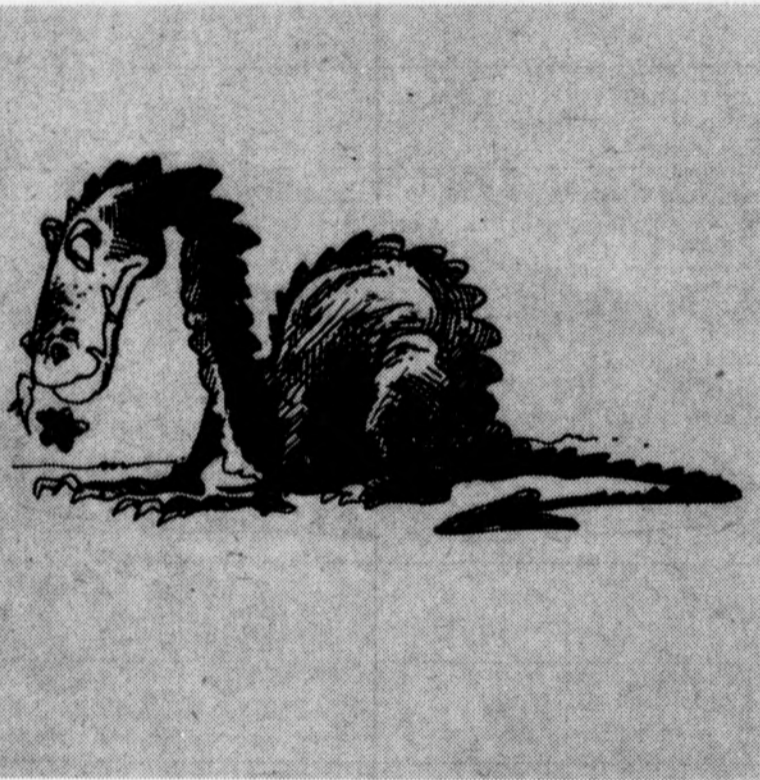
# Pi Lam - TKE

Continued from Page 20

I.F. MVP, Jim Quinn and Ron Harris were always able to misbalance the opposition's defense; keeping them from successfully anticipating the pass. Both quarterbacks racked up good passing percentages; TKE's Rick Pontin was 15-27 for 103 yards, and 3 TD's; Pi Lam's Tom Hoenninger was 15-25 for 90 yards and 3 TD's.

Time was beginning to close in on TKE as they trailed 13-19 with only seconds left to play. To the spectators, it appeared miraculous; to the players, it justified hours of practice, hours they spent each week, nonetheless. For with only second left, Rick Pontin spiraled a climaxing four yard pass to Bruce Sloan for the tying touchdown. The score was now 19-19. Tom Reynolds converted a heavily pressured extra point into an astonishing 20-19 TKE victory.

The game ended leaving many elated spectators amid many disappointed Pi Lam fans. However, the players were aware of the type of football they had just played, and were simply respectfull of each other. For Pi Lam, it will be remembered as a disappointing loss; for TKE, it will long be talked about as a successful struggle to win. Dispite the outcome, both teams realize the profound closeness of such a game.



# I. F. ROUNDUP

by Ginny Worthington & Lorrie Lombardo

Sig Pi led by quarterback Danny Truman remains undefeated by beating Pi Kap 25-6. Walt Pudelko led the scoring for Sigma Pi with two touchdowns and one extra point. Mike Gallagher and Truman finished up the scoring.

Sigma Pi's strong defensive held Pi Kap to a single touchdown. Sig Pi faces undefeated TEP next week.

### TEP-Phi Sig

In another Gold-division game TEP edged Phi Sig in a tough defensive battle.

Phi Sig Gerry Gilroy opened the scoring when he returned an intercepted pass for a 33 yard touchdown. TEP then came back to go ahead on a Fred Stampane to Gary Oswald pass marking the score 7-6. TEP scored again when Howie Edleman sacked quarterback Steve Wineberg for a safety. TEP then finished scoring on Stampane's five yard touchdown run. Then final score was set up by Lou Piccano's twenty yard interception return.

### Lambda Chi-SAE

Lambda Chi led by veteran defense and a high scoring offensive overpowered SAE 45-13. Bruce Lavin started things off for Lambda Chi when he intercepted an SAE pass on the third play of the game. Quarterback Rich Holmes completed a touchdown pass to Steve Cooney to put Lambda Chi ahead 7-0. Holmes, a two-way all I.F. ball player, then intercepted another SAE pass and returned it for a touchdown. Other stand-out performances for Lambda Chi include Booth Blume.

### Theta Chi - SAM

Sigma Alpha Mu showed their usual consistant offenses as they wer shut up by Theta Chi 15-0. Theta Chi, led by Rich Rowland's two touchdowns and Jim Dimmig quarterback safety sack completely overwhelming SAM. Gary borger closed out the scoring with the final extra point.

### Standings to date 11/3

Gold Division	W	L	T
Tau Epsilon Phi	3	0	0
Lambda Chi Alpha	2	0	1
Sigma Pi	2	0	1
Sigma Alpha Epsilon	1	2	0
Phi Sigma Kappa	0	3	0
Pi Kappa Phi	0	3	0
Blue Division			
Tau Kappa Epsilon	3	0	0
Pi Lambda Phi	2	1	0
Theta Chi	2	1	0
Alpha Pi Lambda	2	1	0
Delta Sigma Phi	1	2	0
Sigma Alpha Mu	0	3	0

## GRAND OPENING

with Get Acquainted Pricing

# Lancaster Beer & Soda

5915 LANCASTER AVENUE 879-5100 SUPER MART

## YOUR BEER OUTLET

Open To  
The Public

CASH  
&  
CARRY

MIX  
'N  
MATCH  
SODA  
All Flavors



### FILL YOUR CART WITH THESE

**COKE** 24/10-oz. **\$3.49** Case SAVE \$1.58  
**PEPSI** 24/16-oz. **\$4.99** Case SAVE \$1.37

**TAB** 24/10-oz. **\$3.09** Case SAVE \$1.26  
**Diet PEPSI** 24/16-oz. **\$4.69** Case SAVE \$1.27

**FRANKS** 30 oz. Ret. + Dep. **\$2.67** Case  
**'Big Boss' PEPSI** 64 oz. Bot. **77¢**

**CANADA DRY** 64 oz. Bot. **79¢** All Flavors  
**WELCH'S GRAPE** 64 oz. Bot. **77¢** Sparkling Soda

Reisman's Pretzels & Chips - BIG Discounts  
BEER-All Brands-Imported & Domestic

STORE HOURS  
Tues., Wed., Thur., Sat., 9am to 6pm

Friday 9am to 7pm

"The Shopping Cart"  
For Your Beer & Soda!

- SHOP HERE -  
You'll Enjoy  
The Change

### PREPARE NOW!

LSAT • GMAT • MCAT

GRE • DAT • CLEP • NTE

SPEED READING • TYPING

ALG. • TRIG. • STAT. • GEOM.

DAY, EVE., SAT. • VET APP.

COLLEGE SKILLS CENTER

1717 Walnut St. 561-2800



### ACCOUNTING AND FINANCE MAJORS

LET US HELP YOU TO  
BECOME A CPA

## BECKER CPA REVIEW

Philadelphia  
(215) 735-3520

Pittsburgh  
(412) 471-4333

COURSES BEGIN MAY 26 & NOV. 24

OUR SUCCESSFUL STUDENTS REPRESENT

1/3 OF USA

## 4 Girls Make All-College Cuts

The Women's Field Hockey Team traveled to West Chester State College last Saturday and participated in the All College Tournament. The purpose of this Tournament is to select individuals to compete in the National Field Hockey Tournament later this month at Madison College in Harrisburg, Virginia.

Eleven colleges from the Philadelphia area sent teams or individuals to the Tournament. Drexel played Bryn Mawr in the morning round. Bryn Mawr dominated the game keeping the ball in Drexel's defensive end almost the entire time. However, Drexel won the game by a score of 2-1, both goals scored by Patty Maher. It was a super effort by Drexel's Defense led by co-captain Debbie Lindsey and goalie Barb Filemyer. In the afternoon round the University of Pennsylvania shut out Drexel, 3-0. Other colleges that participated in the tournament were West Chester State, Ursinus, East Stroudsburg, and Lafayette.

Three Drexel players were asked to return this Saturday, November 8th, for the final selection. Ruth Smith, Left inner; Patty Maher, right inner; and Theresa Varrasse, fullback, have made the first cuts for All College Hockey Team. CONGRATULATIONS!!!

# JOIN TRIANGLE

# BASKETBALL OUTLOOK

by Coach Ray Haesler

Experienced seniors teamed with talented sophomores and a freshman in the composite nucleus of the Dragon's 1975-76 basketball team.

Increased overall size and quickness are definite assets but lack of abundant playing time beyond two seniors could be a problem. Also lacking is a dominating center which would definitely make the Dragons a great team. The schedule is stronger with the addition of more N.C.A.A. Division I teams (Princeton, Fairleigh Dickenson).

Team defense is one category which the Dragons have consistently been ranked high nationally in the past three years and they moved up from 10th in the nation in 1973-74 to sixth last year giving up only 62.5 points per game in N.C.A.A. Division I statistics.

Leading the returning lettermen this year is all East Coast Conference 6'5" forward Doug Romanczuk. He was the team's leading scorer and rebounded last year with good shooting, quickness, strength, rebounding, and aggressiveness. These skills make Doug probably the best all around forward ever to play basketball at Drexel.

The other senior is 6'6" forward Mike Kernan who is an excellent

outside shooter. He has improved his inside game and must aid with rebounding to compensate for the Dragon's lack of the big center. The strongest player on the team is 6'6" Doug White who started as a sophomore in the 1972-73 season and led the team in rebounding with ten per game. His junior year was hampered by injuries and last year he sat out. When he returns to his sophomore playing form he will make a great contribution to this year's team. From this trio of experience the Dragons progress to young, talented, and enthusiastic sophomores who all saw varying amounts of playing time as freshmen. Adding size and muscle to the front line is 6'6" Tony Weldon. He has all the natural abilities of a great player with good size, shooting, leaping and instincts for the game. When he becomes consistent, opponents had better beware. Completing the front line players are 6'3" Randy Barnes who was the Junior Varsity M.V.P. last year. He is quick, an explosive rebounder and shooter and makes up for his lack of size with hustle and desire.

Bob Stephens is a 6'7" all Public and Sonny Hill League M.V.P. freshman who keeps improving with each practice. A great shot blocking defensive specialist,

rebounder and shooter, Bob could very well crack the starting line up.

The backcourt will be young but experienced because 6' sophomore Joe Conahan started over half the games last season and played in all of them averaging five points per game and running the offenses as point guard. Excellent on defense and a fine shooter, Joe is a sure bet to becoming one of the top East Coast Conference guards. The other guard position is up for grabs by either Ray James or Tom Betley. Both are explosive players capable of turning games around. James is quick and a good shooter. Betley is a tall 6'3" swing player who can do it all, shoot, rebound and play excellent defense.

This year the team co-captains were named by teammates and coaches. Seniors Doug Romanczuk and Mike Kernan were chosen last Saturday, November 1st. Both are fine players, gentlemen and excellent students. (each well above 3.0)

The 1975-76 team is probably the most talented in overall basketball ability that Drexel has ever had. When all the skills of these players mold into team offense and defense they will be tough to beat. Drexel hasn't had a losing season in three consecutive years and this team is a sure bet to continue that winning tradition.

## 1975-76 DREXEL UNIVERSITY DRAGON VARSITY BASKETBALL ROSTER

- 15 RÁNDY BARNES F JR. 6-3 Dobbins/Phila., Pa.
  - 14 RAY JAMES G SO. 6-0 Asbury Park/Asbury Park, N.J.
  - 21 TOM BETLEY G-F SO. 6-3 Haddonfield/Haddonfield, N.J.
  - 22 JOE CONAHAN G SO. 6-1 North Catholic/Phila., Pa.
  - 23 MIKE KERNAN F SR. 6-6 North Catholic/Phila., Pa.
  - 25 DOUG WHITE C SR. 6-6 Eastern/Ashland, N.J.
  - 33 TONY WELDON C-F SO. 6-6 Germantown Stevens/Phila., Pa.
  - 42 BOB STEPHENS C FR. 6-7 North Catholic/Phila., Pa.
  - 42 DOUG ROMANCZUK F SR. 6-5 North Catholic/Phila., Pa.
  - 43 BOB STEPHENS C FR. 6-7 Olney/Phila., Pa.
- HEAD COACH: Ray Haesler, 5th season at Drexel (52W-41L)  
ASSISTANTS: Mike Fee & Glenn Albano  
CO-CAPTAINS: Doug Romanczuk & Mike Kernan



Co-Captain Mike Kernan



Co-Captain Doug Romanczuk

## The Salesians...

Helping others to help themselves.



True charity isn't always a handful of rice . . . or the gift of a warm shirt . . . it's helping others to help themselves. A more lasting and dignified way, we say.

Since our foundation in 1859, this has been the Salesian way. Education is the keynote. What good is a meal today when one must think of all the tomorrows? St. John Bosco knew this well. What good are dreams unless they are translated in reality by deeds?

Around the world, Salesian missionaries help their flock by giving them ways to help themselves. Whether it is agricultural training or technical training for a trade they can learn, people are encouraged to find their own niche, their own way of betterment, their own road to human dignity and self help.

Salesians work primarily for youth, for it is in the young that hope is born. There are Salesian missions in 73 countries around the world. If you are interested in a life that gives as much as it receives, fill-in the coupon below . . . and we will send you additional information on the Salesian way.

FOR PEACE OF FEET . . .  
TRY

**Clarks**  
**WALLABEES**



Put on Clarks Wallabees and the world looks brighter. Wallabees have a unique moccasin construction plus resilient plantation crepe soles — a combination perfectly designed for light footed comfort.

Men's sizes \$37.95  
Women's sizes \$36.95

**Free People's**  
4307 Locust St.

## WANT AN ENGINEERING CAREER THAT'S DIFFERENT?

More than 100 recent U. S. engineer grads are in the oil fields of the Middle East, West Africa, Far East, and Europe as Schlumberger engineers. Interested?

**Schlumberger**

INTERVIEWING

EE, ME, Physics BS and MS  
November 12, 1975

For more information about Salesian Priests and Brothers, mail this coupon to:  
Father Joseph, S.D.B. Room C-321

**Salesians** OF ST. JOHN BOSCO  
Flors Lane, West Haverstraw, N.Y. 10993

I am interested in the Priesthood  Brotherhood

Name \_\_\_\_\_ Age \_\_\_\_\_

Street Address \_\_\_\_\_

City \_\_\_\_\_ State \_\_\_\_\_ Zip \_\_\_\_\_

College Attending \_\_\_\_\_

Class of \_\_\_\_\_

# OWLS DASH DRAGONS DREAMS



The Dragons was slain Saturday. In a battle for the East Coast Conference, East Section Championship, Temple downed Drexel in a game that was nothing short of classical. The Owls, needing a win, came out playing a hard, open game, taking chances. Drexel, on the other hand, would clinch the title with a tie, played a more conservative game. The teams exchanged goals in the opening minutes, and the tie held to halftime. Then, early in the second half, Temple got a break. The Dragons defense was caught upfield and the Owls came down 4 on 2. John Klienstuber didn't come near the shot. Now down a goal and facing elimination, Drexel abandoned its conservative play. But the Owls, ranked nineteenth nationally, took advantage of the looser play and scored again to make it 3-1. They then played defense and the game ended 3-1. Temple is the section champion. Drexel, second with a 3-1-1 conference, and 5-4-2 overall record, has an outside chance of getting an at-large berth in the NCAA, but this is unlikely. Still, the team can be proud; they make a great go at it, and gave us some real excitement. Let's get out and show our appreciation in tomorrow's Homecoming game against West Chester.

## Triangle Sports



TKE QB John Ceresoli gets off Pass Despite P. Lam rush

### I. F. RETURNS

I.F. football is entering its fourth week of the regular season, and only two teams remain undefeated; Tau Epsilon Phi of the Gold Division, and Tau Kappa Epsilon of the Blue Division. TKE had yet to exert itself until this past week. They handily defeated Sigma Alpha Mu 38-0 in its first game and easily put down Delta Sigma Phi 26-6 the following week.

However, last Saturday was very different. The day was excellent for football, as TKE and Pi Lambda Phi took to the field. The sun was warm, and a cool breeze blew across the field. About one hundred screaming parents and cheering fraternity brothers and girlfriends lined both sides as Pi Lam drew first blood. The score came on a Tom Hoenninger screen pass to Ray Moranda, who broke away from all tackles and rushed 45 yards for a touchdown. But TKE put itself on the scoreboard with a 10 yard pass from Rick Pontin to John Ceresoli. Again, the momentum shifted as Pi Lam scored again on another Tom Hoenninger pass to Ray Moranda, who again broke free, running 20 yards to boost the score to 13-7 in favour of Pi Lam. As could be guessed at this point, TKE came back with another Rick Pontin pass, now to Tom Reynolds for 26 yards, making the score 13-13. Pi Lam scored at the end of the first half on another Tom Hoenninger pass, this time to Steve Jones, who ran 45 yards to capture a 19-13 halftime lead for his team.

Both teams returned from half-time ready for action. On the first play of the half, Ray Moranda intercepted a mid-field TKE pass, returning it down to the TKE two yard line. In four crowd roaring plays, the outstanding defense of TKE rose for the occasion, containing Pi Lam's offense and robbing them of an expected 25-13 lead. After that tremendous display of defense, the entire game appeared to become defensive. John Woolley, Bill Hewitt, Frank Arelli, and Bill Kline rotated in the game as TKE's defensive backs, as Jim De Jeus roamed the backfield as middle linebacker. For TKE, the game belonged to these players. Time after time in that second half, they foiled Pi Lam's running plays and broke up numerous passes. For Pi Lam, it was frustrating. For their receivers of Ray Moranda, Steve Jones, Jim Strangroom, and John Oannavan, there remained many memories of dropped enzone passes.

The running games of both teams were limited, both teams favoring the passing game. However, when they did, TKE's Harry Stephano, last year's

Continued on Page 18

### ICEMEN THRASH TEMPLE

by Kevin Haskins

Last Sunday night, the Dragons put together their best offensive performance of the young season, beating Mulenberg 5-1 in a runaway game. Goal scorers for Drexel were Vince Cacesse, Rooky Schullie, Steve Carson, Neil Thomas and John Salter. Drexel put their fisticuff ability to work also, as Aram Achikvashian and Pat Chumbler each were given match penalties for fighting.

Tuesday night at the Class of '23 rink, Drexel had both their offensive and defensive machines in overdrive as they beat the Temple Owls 4-1.

Midway into the first period, with the Owls pressing in Dragon's territory, an Owl's forward slide the puck through the goal mouth. Drexel defenseman George Austin hurled himself into the crease to keep the score tied at zero. Temple outshot the Dragons 6-4, but both offenses lacked the ability to finish their plays off in the first. Both squads were more concerned with using muscle as they traded vicious bodychecks a number of times in the first period. Drexel's penalty killing was super, killing off 2 shorthanded situations in the first.

The Dragon's began the second period with a powerplay which failed. On the powerplay, Pete Bauers almost opened the scoring with a blast from the point through a screen, but Temple's goalie did the splits to keep Drexel off the board. Temple wasted no time in handing Drexel another powerplay, but Drexel's passing on the advantage was sloppy and the puck stayed in Drexel's own end for the full two minutes. Drexel returned the favor to Temple in double, as two Dragons were sent to the penalty box within 30 seconds of each other. Excellent penalty killing by captain Pete Bauers and company staved off Temple's powerplay. Checking remained tight in the second, until with 9 minutes left in the period the Dragons capitalized on a powerplay. Pat Fitzpatrick hit John

Salter with a pass at center ice and Salter turned the defense and caromed a backhand from the corner off the goalpost for the score. The shots in the second period went to Drexel, 10-7.

Early in the third John Salter upped Drexel's lead to 2-0, as he took a pass from Steve Bayer, pulled the puck around a Temple defender and fired the puck from the top of the face-off circle for the goal. Temple got on the board five minutes into the third as Temple forward Bill Feinberg blasted a drive low to the ice for the score with Bill Tait in the penalty box for Drexel. At 7:05 of the third, Pete Bauers flipped a pass to Salter who was parked to the side of the Owls goal. Salter very casually flipped in a backhand for his second hat trick of the year, giving Drexel a 3-1

lead. With ten minutes left in the game Salter stormed up ice and flipped a wrist shot in for his fourth goal of the night, this one unassisted. That concluded the scoring for the night but Drexel's checking remained great until the end of the game. The Dragons badly checked well, and each time an owl took a shot a Drexel skater would dump him to the ice to keep the Owls honest. Drexel outshot Temple in the third, 8-4, and 22-17 for the game. The final score was Salter's Dragons 4, Temple 1.

The win upped Drexel's overall record to 4-1, but they 0-1 in league competition. The win proved that the Dragons can mount an impressive offensive attack and at the same time shut the door on their opponents offense.



John "Hat Trick" Salter lets one go